

 LOCATION

Hyannisport, MA 02647

 DISTANCE FROM NYC

275 miles

 TAGS

Backyard Lawn, Balcony, Beach, Bedroom, Colonial Federal, Deck, Fireplace, Historic, Kitchen, Living Room, Ocean or Bay, Staircase, Sun Room, Traditional, Wallpaper, Water View, Wood Floor

 SPECS

6,000 square feet

1 acre

9' ceiling height

 POWER

200 amps, basement

 CATEGORIES

Beach House, Event Space, House

Notes

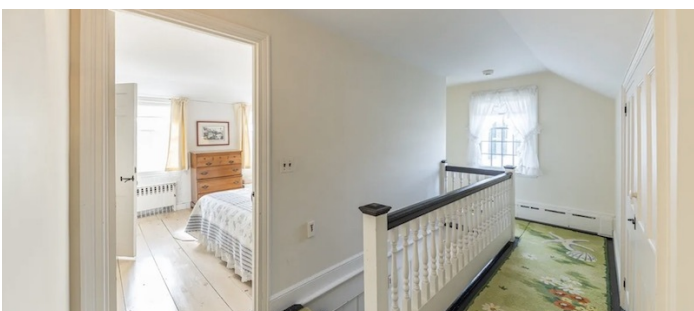
Built in 1797 with vintage Cape Charm and direct access via the lawn to private Atlantic beach, the Scudder Homestead is among the oldest in this historic part of Cape Cod. The Scudders were among the first settlers to the Cape, and this was Captain Scudder's house, at the end of Scudder Rd. Later owned by the Laughlin (steel) family from Pittsburg and Jean Kennedy Smith, President JFK's youngest sister.

Part of the original "Kennedy Compound" in Hyannisport. 14' wide floorboards, original wood wainscoting and 4 brick fireplaces. 1 acre lawn in front of the beach is one of-a-kind in this setting.

Restrictions:

No nailing into or painting of walls.







BEACH

