

LOFT LEVEL - VIEW FULL DETAILS BELOW

LOCATION

New York, NY 10014

TAGS

Bathroom, Bedroom, City View, Deck, Exposed Beam, Exposed Brick, Fireplace, Floor to Ceiling Windows, Garden, Kitchen, Library Room, Living Room, Modern Contemporary, Terrace Patio, Wood Floor

SPECS

Loft Sq Footage: 2,500
Loft Ceiling Height: 17'
Main Sq Footage: 5,000
Main Ceiling Height: 17-19'
Patio Sq Footage: 2,300
Dinner Capacity: 220
Cocktail Capacity: 300

POWER

Garage, Basement, Patio - 200 AMP - 3 Phase, Cam Lock Tie In

CATEGORIES

* In the Zone, Artist Studio / Gallery, Event Space, Loft, Studio

Notes

Unique studio and event space in West Village with loft level and main level.

Loft Level - 2 flight walk up, high end loft with furnishings, stunning windows (West and North), working fireplace, flooded daylight (full black-out shades), and huge outdoor Japanese style garden terrace.

Main Level - Open studio space with theatrical lighting and sound system installed, separate "gallery" space, crow's nest overlook, and fully working commercial kitchen.

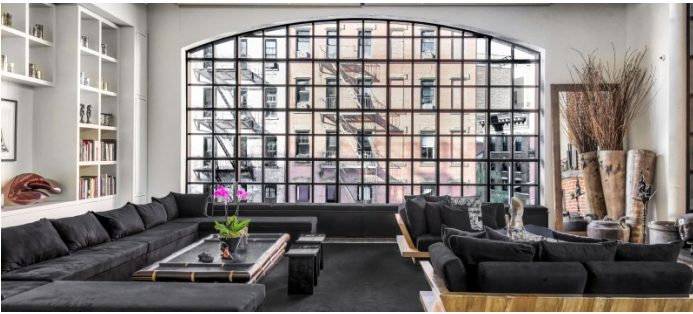
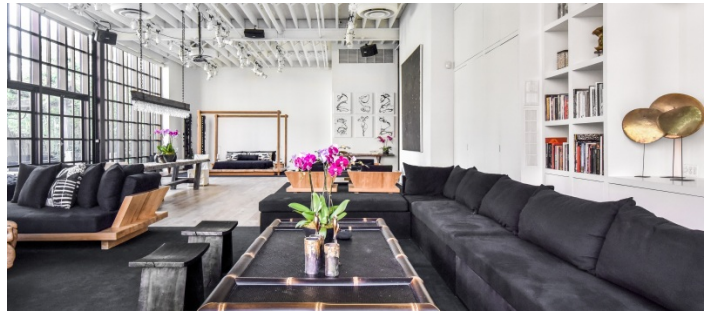
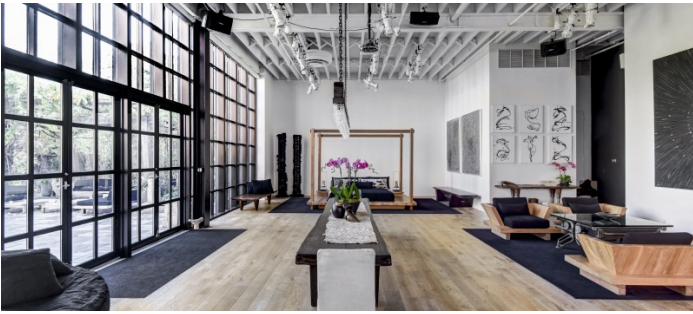
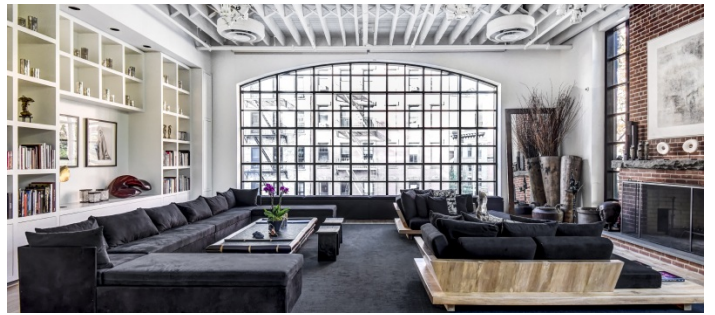
Loft furnishings need to be credited if used for film/TV; additional cost to rent furnishings.

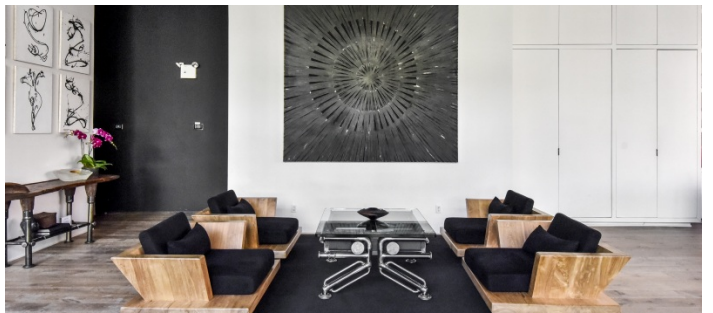
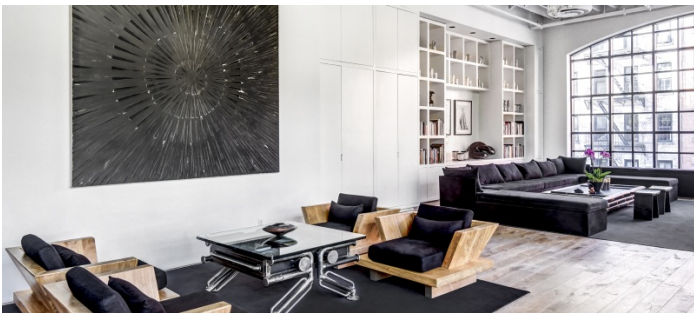
Furnishings subject to change.

Restrictions:

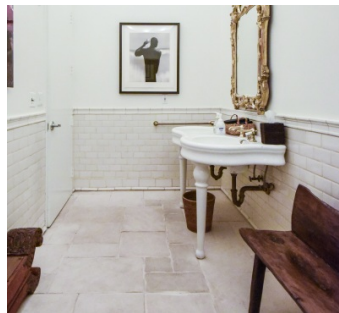
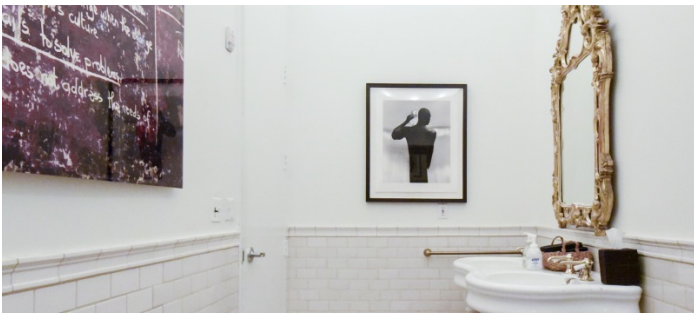
No Children's / Teen Parties (Mitzvah, Quinceanera, etc).

Possible to nail into or paint walls but must be restored to original condition.

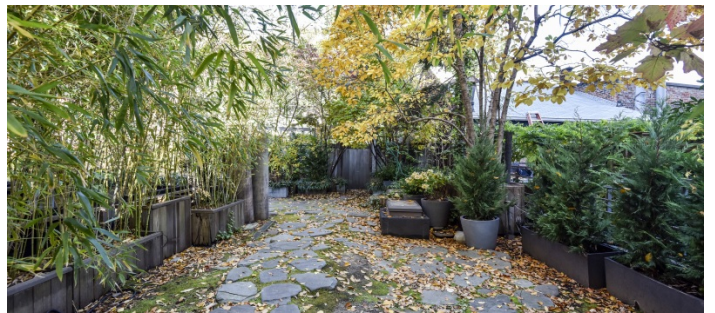
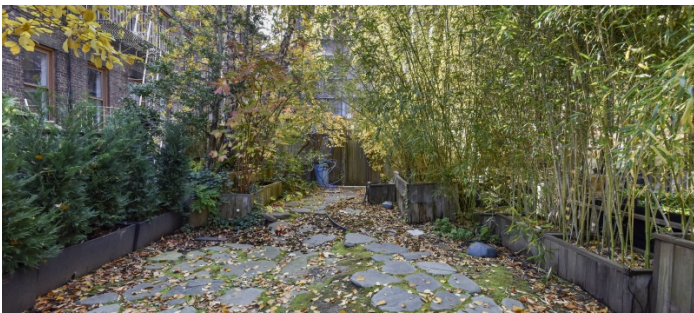
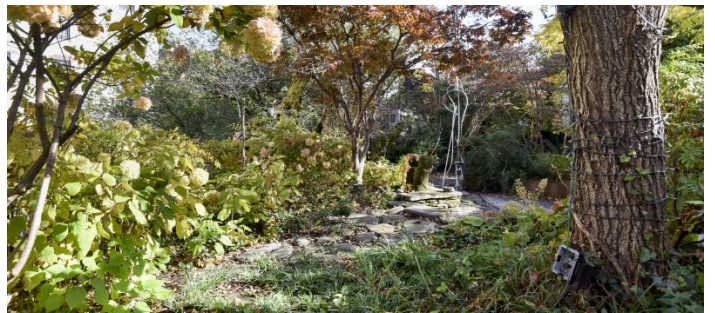
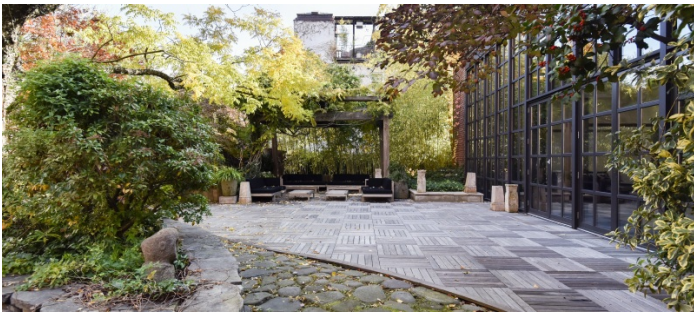






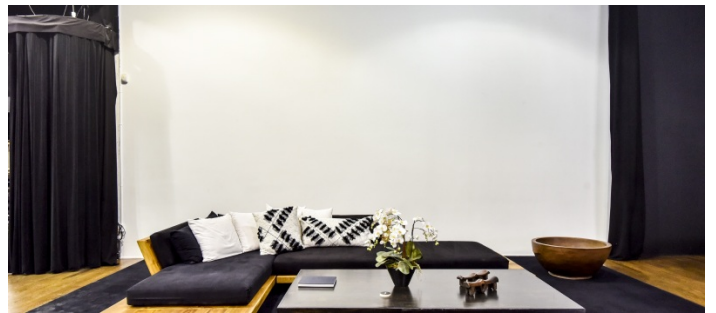


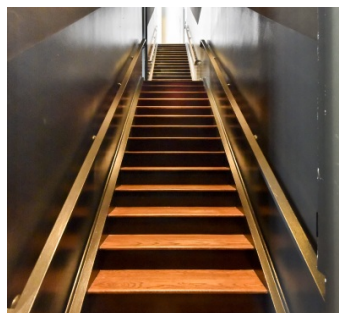
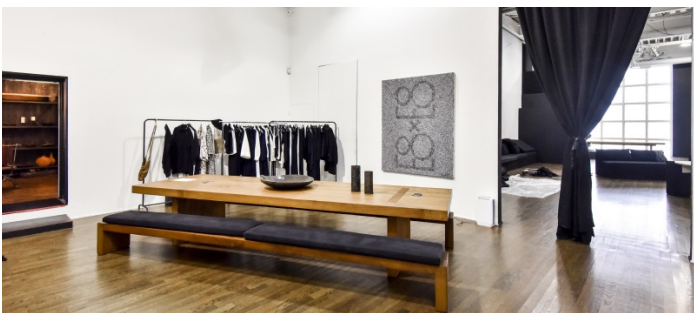
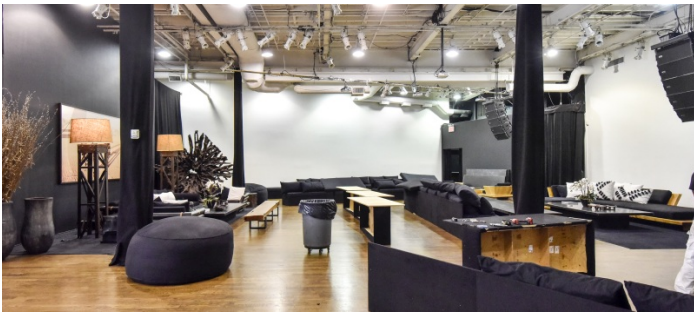
TERRACE

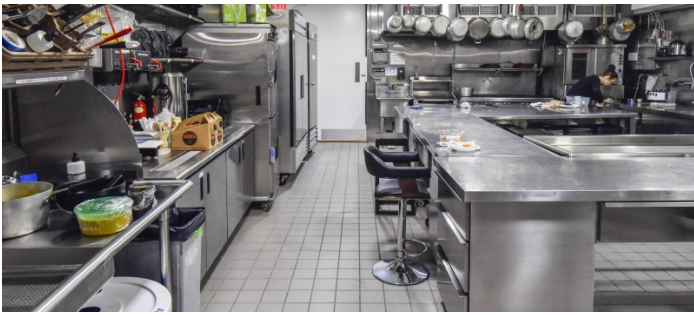




MAIN LEVEL (FURNISHING SUBJECT TO CHANGE)







EXTERIOR

