

1014

Soho, Manhattan

LOCATION

New York, NY 10013

TAGS

Bathroom, Bedroom, City View, Elevator, Exposed Beam, Fireplace, Kitchen, Library Room, Living Room, Modern Contemporary, Rooftop, Skylight, Staircase, Terrace Patio, Walk-in Closet, Water Tower View, White Spaces, Wood Floor

SPECS

Loft: 3,000 sq ft

Ceiling Height: 15'

Rooftop: 2,000 sq ft

CATEGORIES

* In the Zone, Apartment, Loft, Penthouse, Roof Top

Notes

Penthouse loft on Mercer Street in Soho. It has all the classic features of a traditional soho loft: key-lock/direct entry elevator, exposed wood beams, exposed brick, cast iron columns, open layout with a chef's kitchen, living room and dining room. It has 2 bedrooms, a home office/library and 2.5 bathrooms. Furnishings from Christian Liaigre, Rose Uniacke, Walker Zabriskie, Gregorius Pineo and Restoration Hardware.

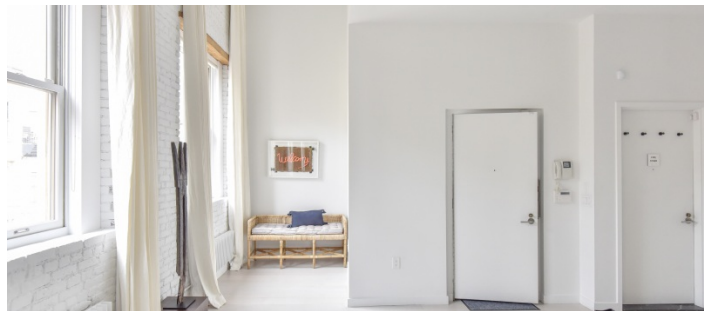
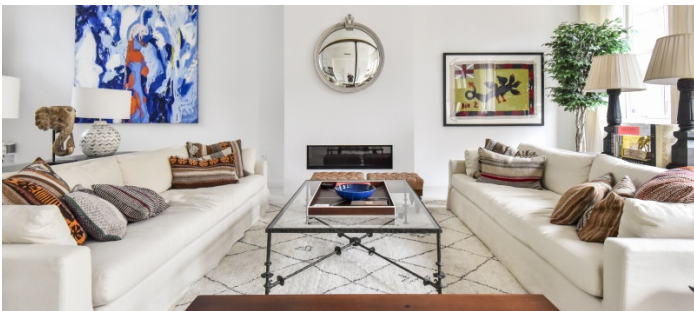
It also has 2 very large central skylights and a 2,000 sq foot roof terrace which is private to the unit.

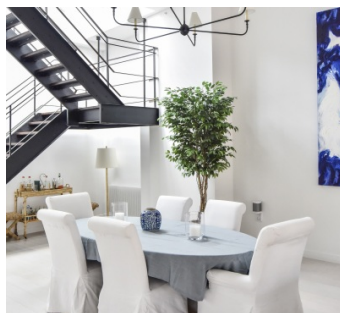
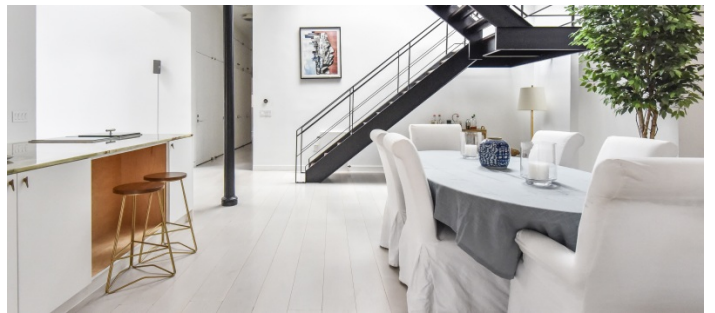
Restrictions:

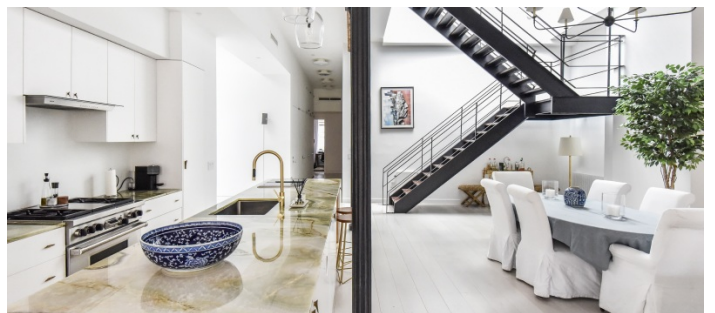
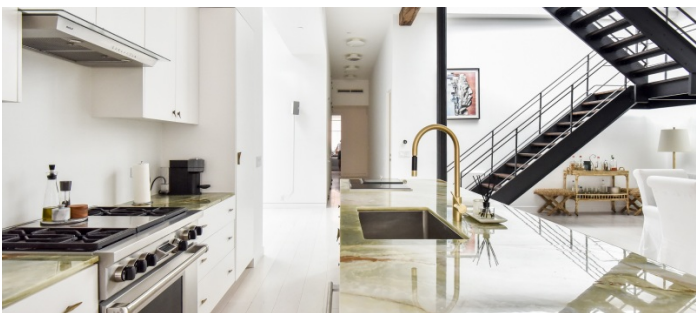
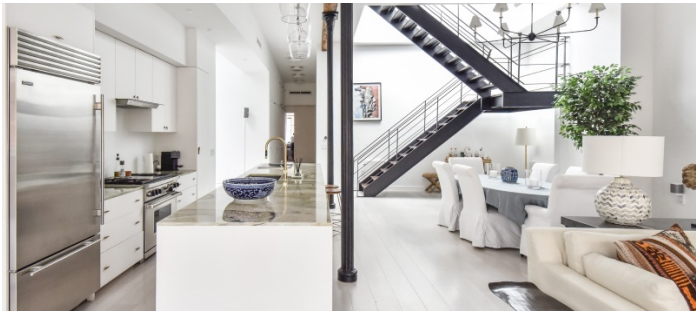
Floor must be protected, no shoes indoors (please bring booties).

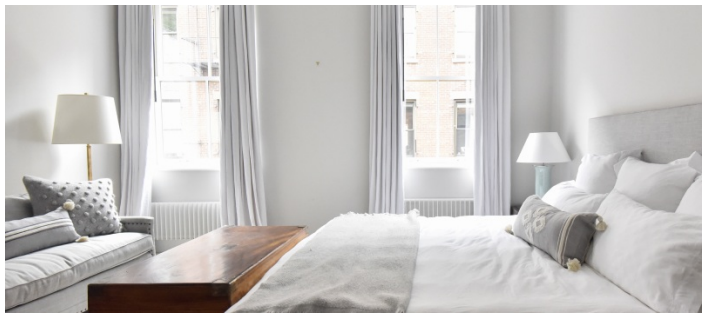
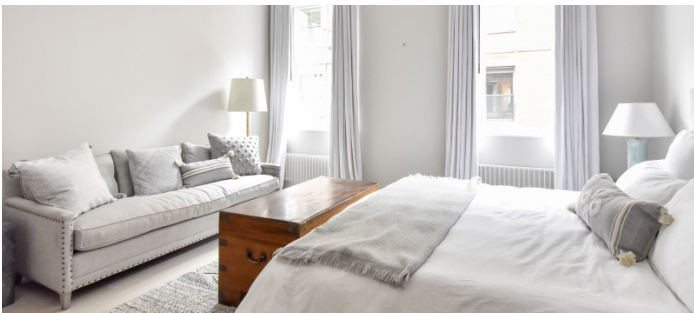
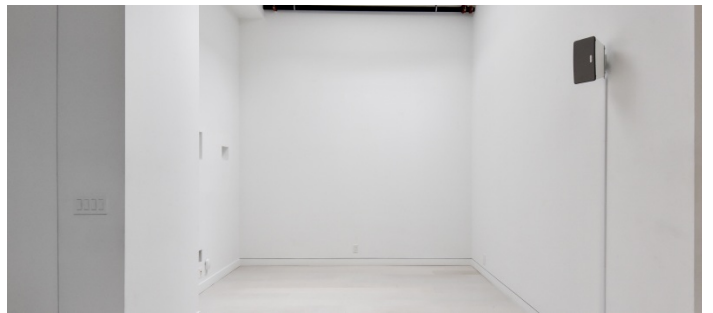
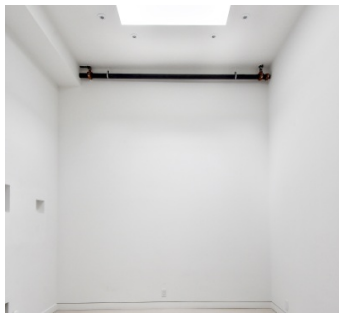
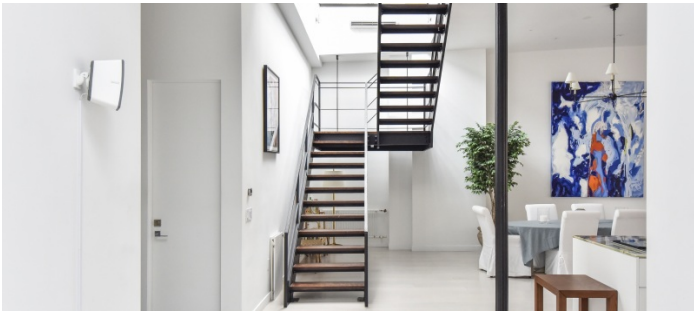
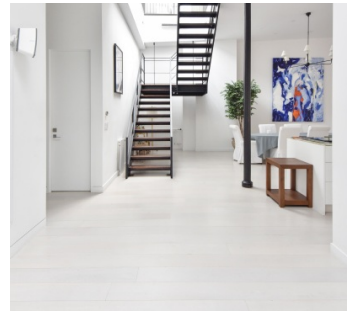
No painting of walls. Possible to nail in walls with prior approval and as long as returned to original condition.

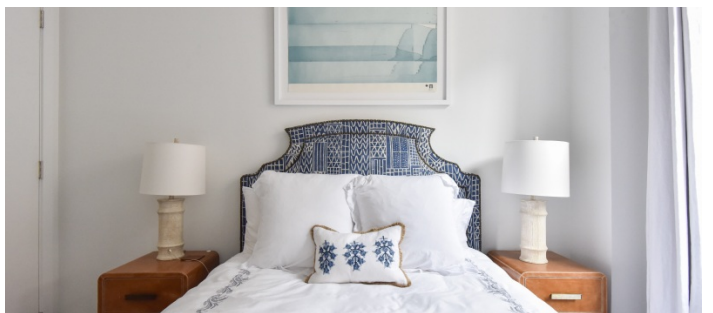
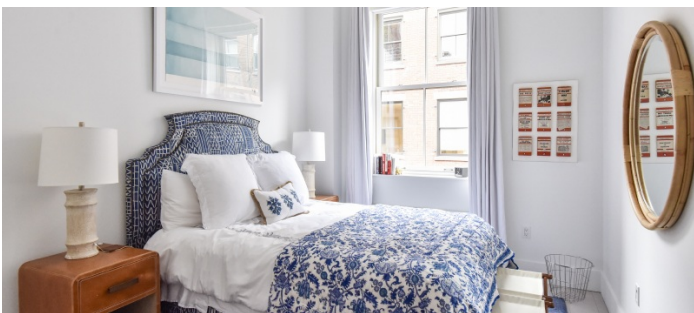
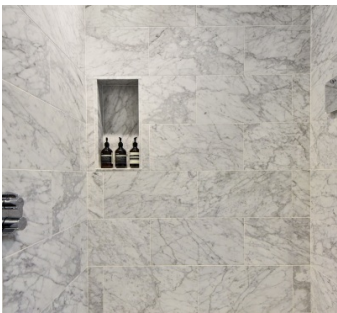
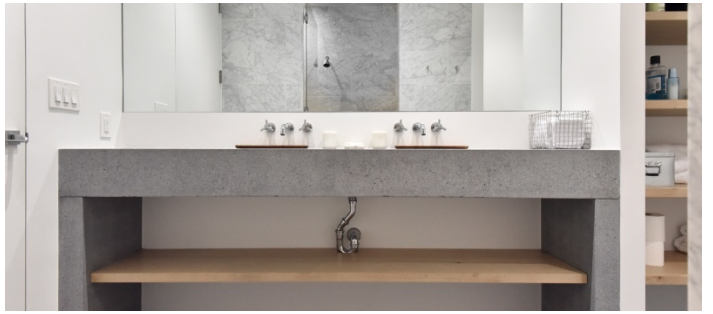
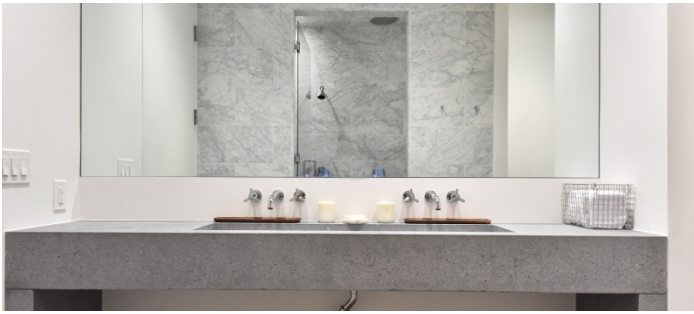
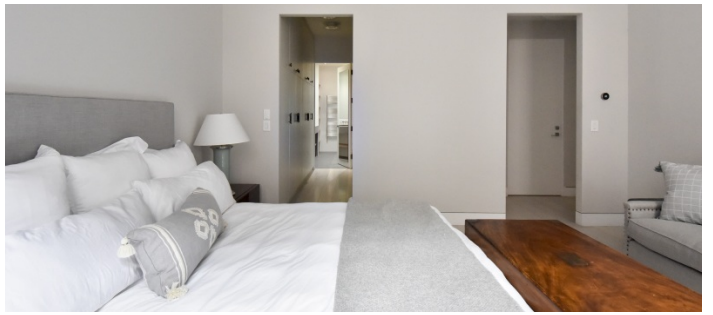
Moving artwork must be cleared in advance. The large Donna Huanca painting can not be moved.

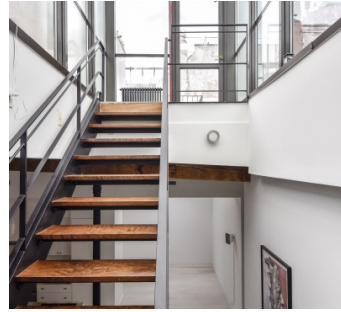
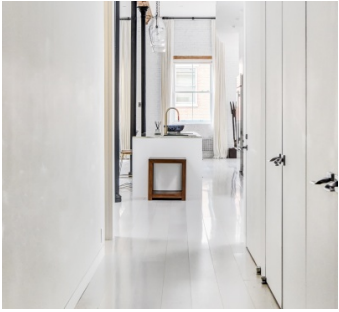
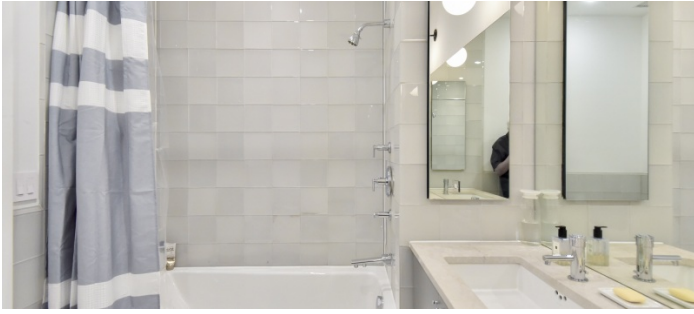
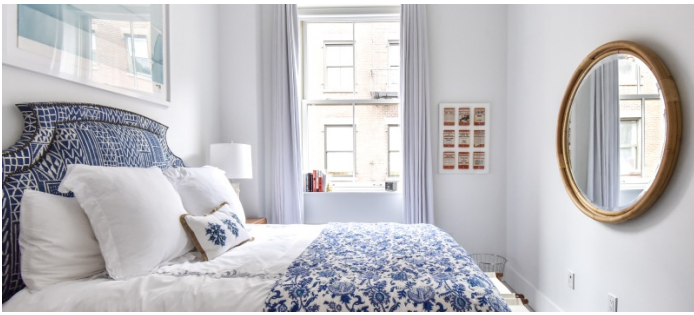












PRIVATE ROOFTOP TERRACE

