

1020

Tribeca, Manhattan

LOCATION

New York, NY 10013

TAGS

Bathroom, Bedroom, City View, Elevator, Fire Escape, Garden, Hammock, Kids Room, Kitchen, Living Room, Modern Contemporary, Rooftop, Staircase, Terrace Patio, White Spaces, Wood Floor

SPECS

Loft: 1,900 sq ft

Rooftop: 1,700 sq ft

Dinner Capacity: 20

Cocktail Capacity: 40-85

CATEGORIES

* In the Zone, Apartment, Event Space, Loft, Penthou

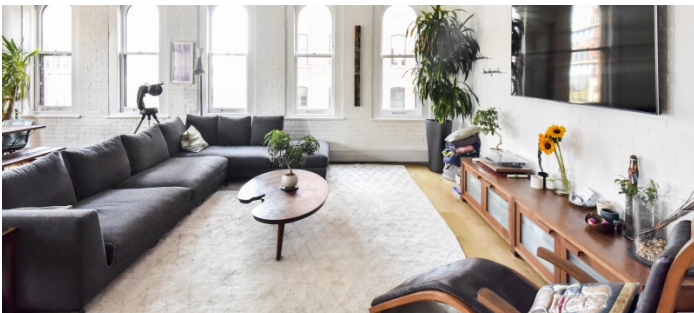
Notes

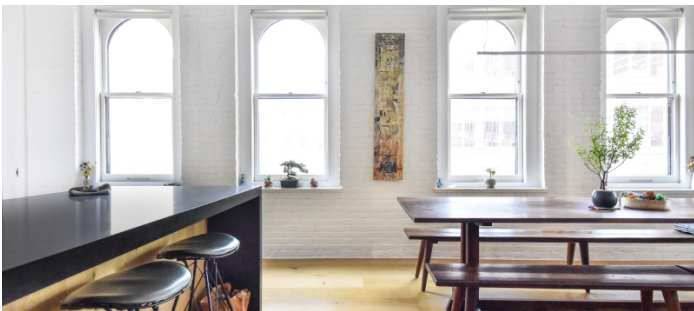
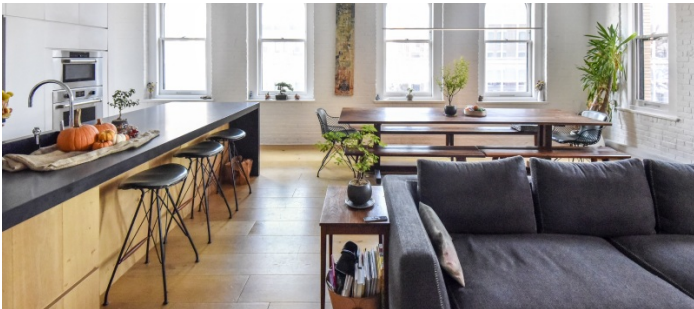
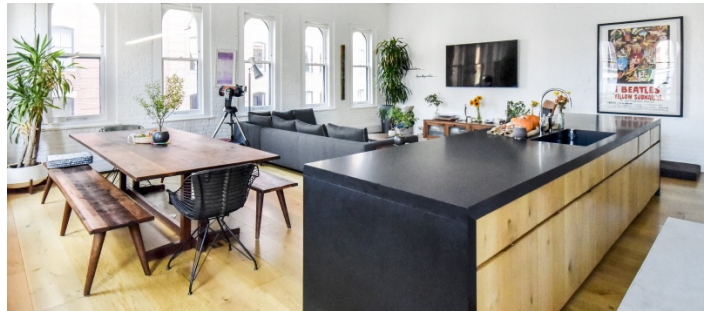
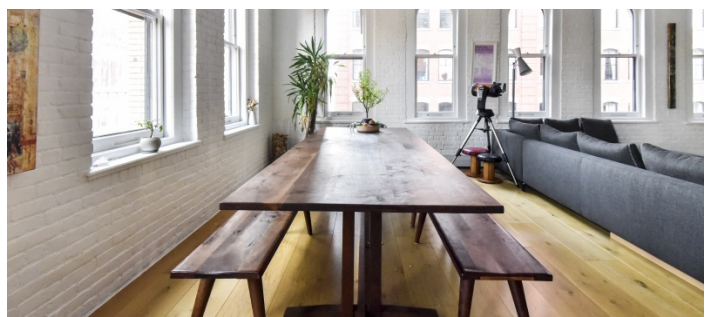
1,900 square foot newly designed loft in Tribeca with 1,700 square foot private outdoor green roof.

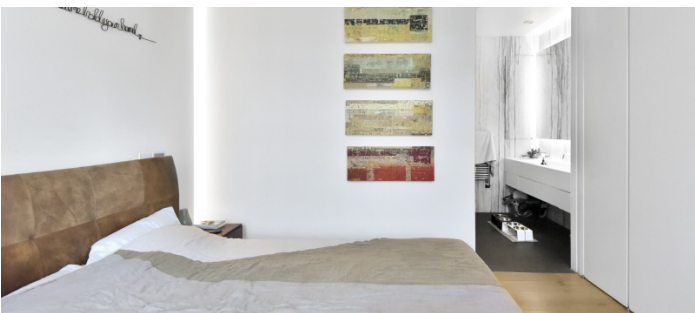
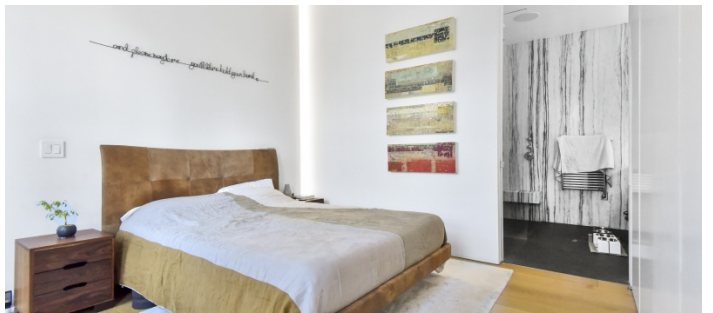
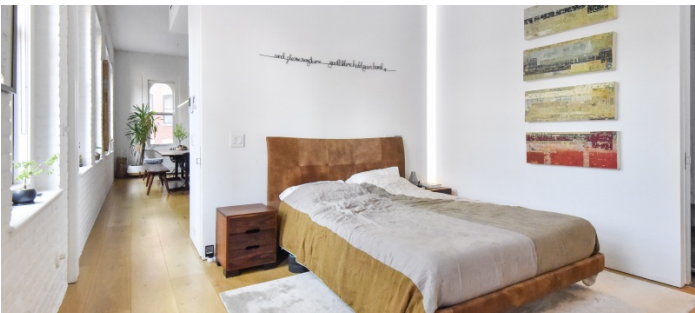
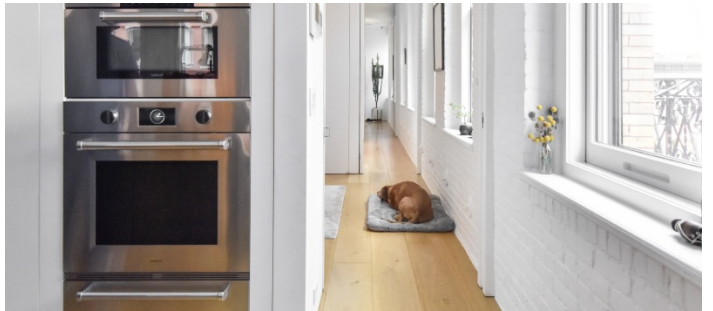
Restrictions:

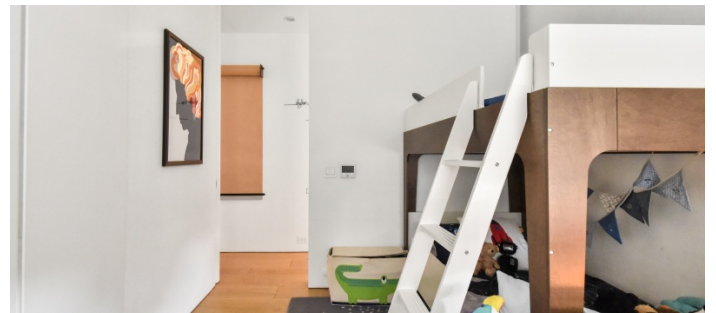
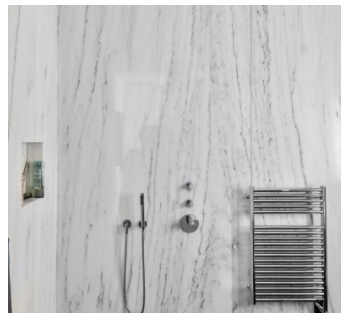
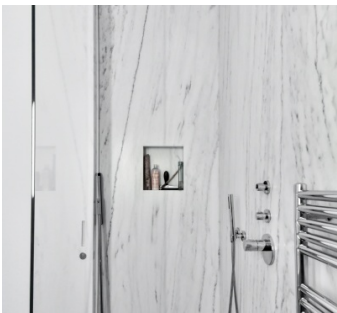
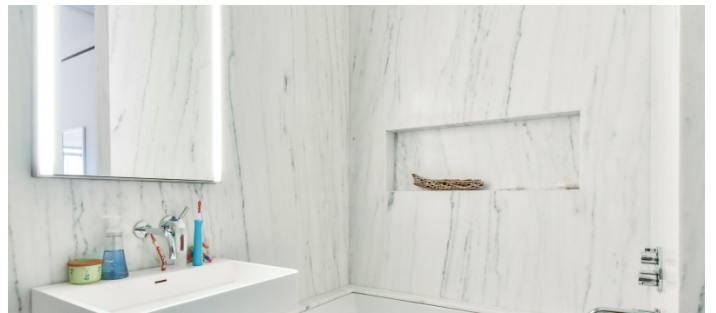
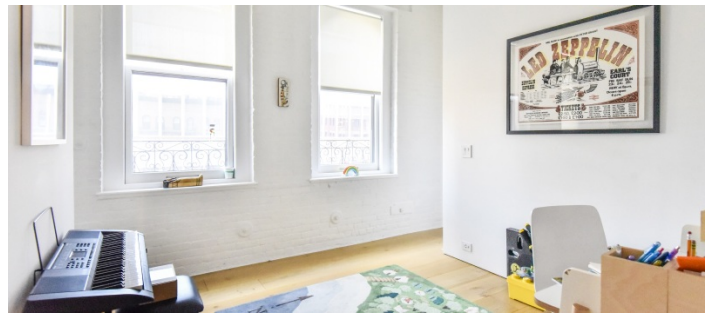
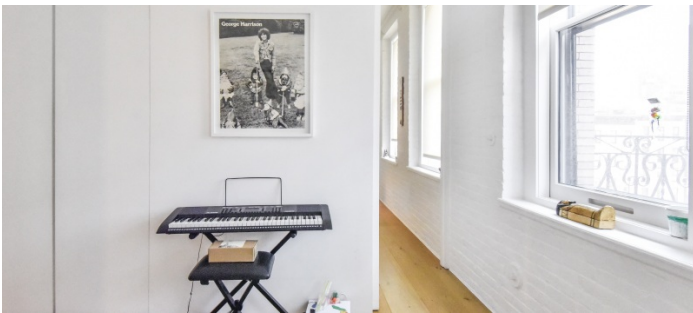
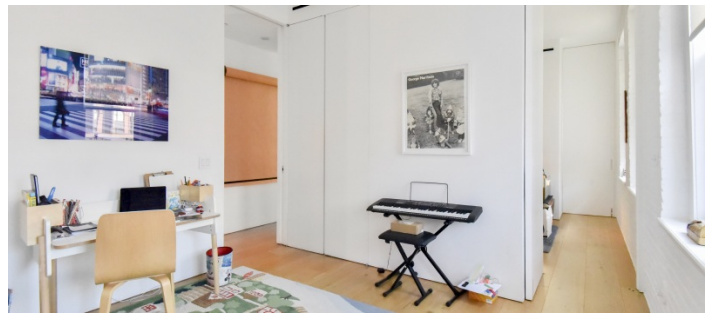
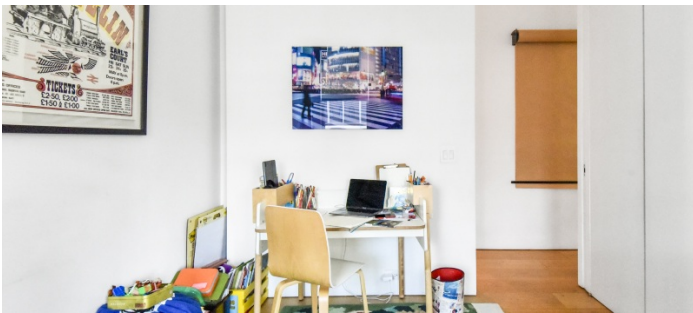
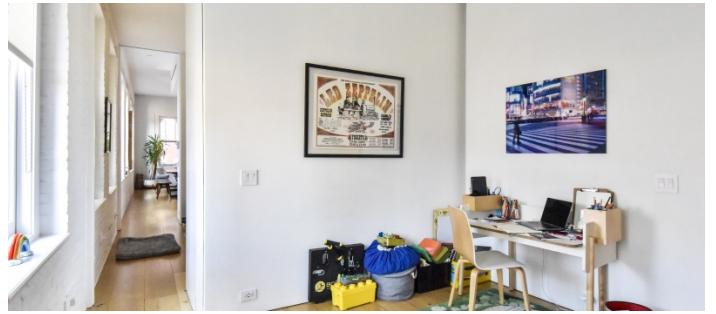
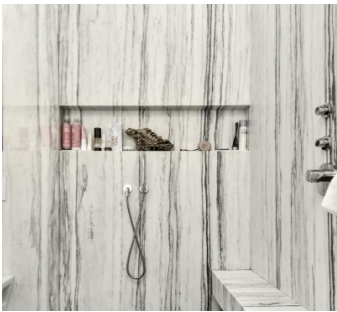
Areas of use must be determined in advance.

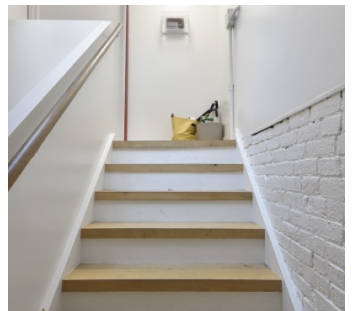
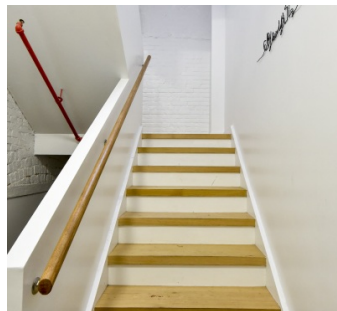
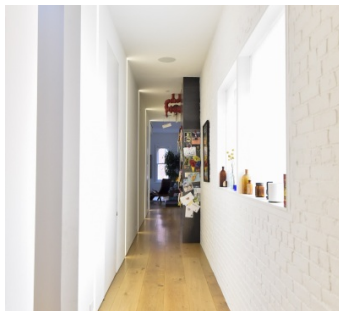
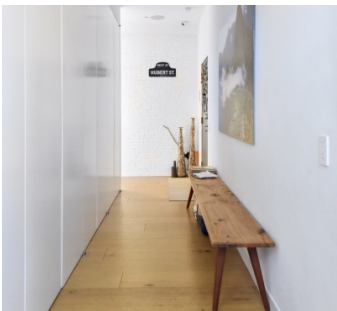
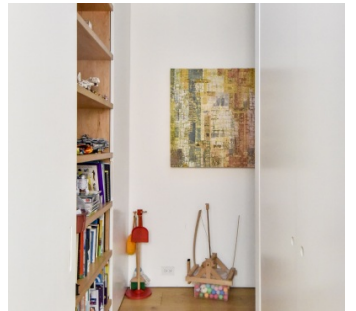
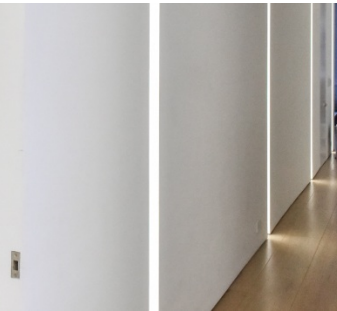
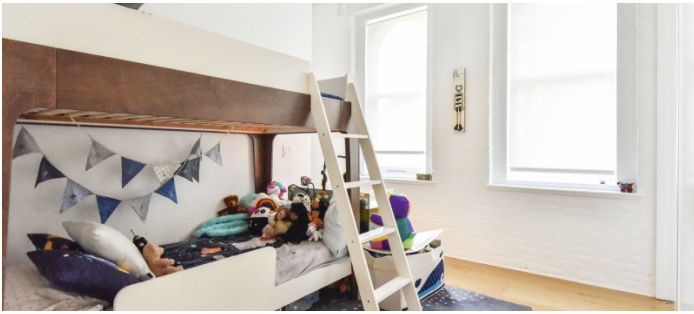
Floors must be protected.

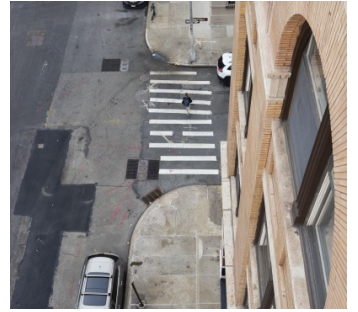












ROOF TERRACE

