

 LOCATION

Beacon, NY 12508

 CATEGORIES

Apartment, Duplex, House, Loft

 DISTANCE FROM NYC

61 miles

 TAGS

Backyard Lawn, Bathroom, Bedroom, Eclectic Quirky, Exposed Beam, Kitchen, Living Room, Modern Contemporary, Scandinavian, Skylight, Staircase, Terrace Patio, White Brick Wall, White Spaces

Notes

Large, open, ground floor 1,900 square foot loft in a former artist foundry warehouse in Beacon, NY.

The loft has a full height of 25' at the roof's pitch, and an open mezzanine level overlooking the full, airy space. Original features include wooden columns, beams, exposed brick, and concrete floors on the first floor. The space gets great light through 2 enormous front windows (NW-facing) and a skylight.

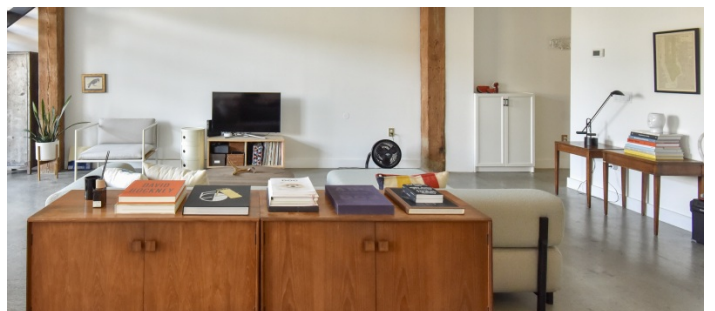
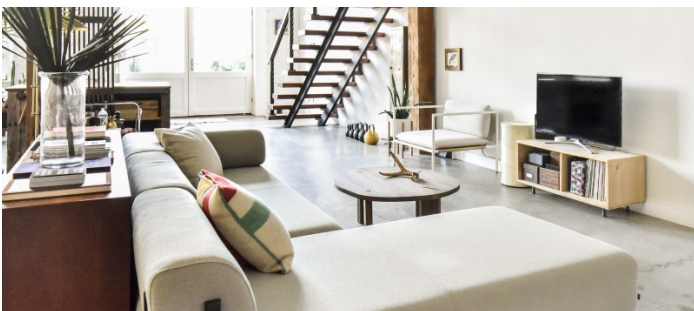
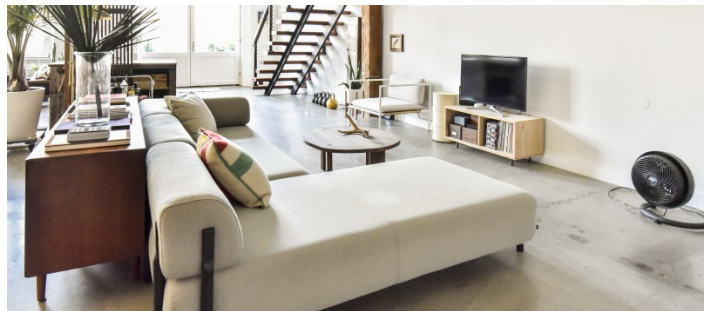
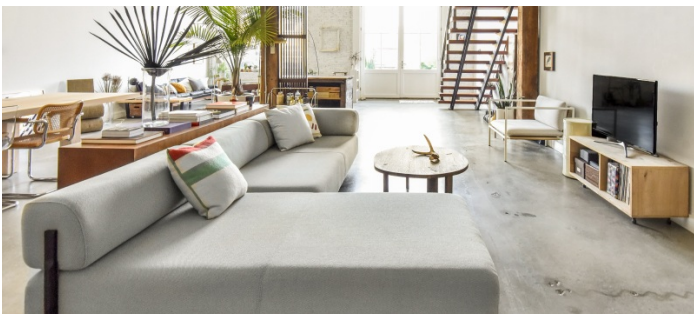
There is a mixture of vintage mid-century furniture and more contemporary pieces giving an eclectic vibe, and plenty of wall space for hanging/rearranging art (nailing allowed on approval). There are 1.5 bathrooms available for crew use. Full-length blinds for the windows and a powerful AC unit. Outside is a small, enclosed paved patio with a white concrete bench area.

Adjacent to the loft, there is a vast open space, a mixture of concrete parking area, and a grassy meadow with a big sculpture in it. For large crews, the owner can arrange separate clearance for use of this space - great for use as a holding area for parking trailers and trucks.

Restrictions:

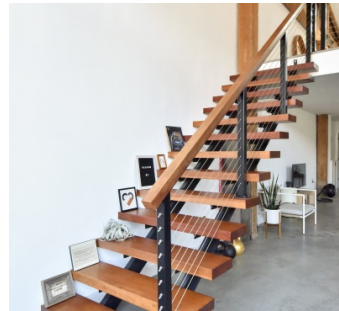
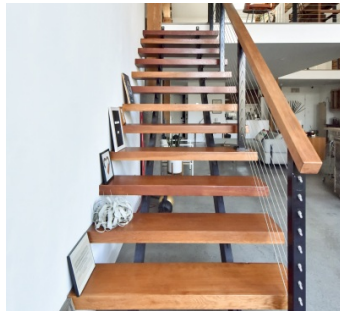
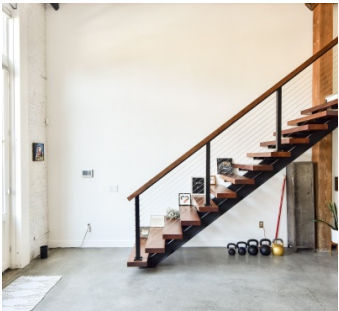
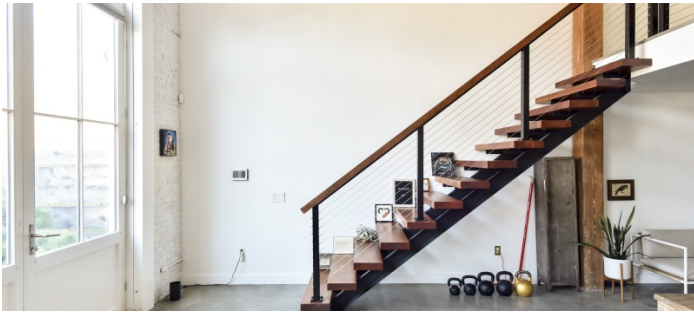
Requests to move art or nail into walls requires owner approval in advance.

Shoots that include the sculpture may need additional artist clearance.

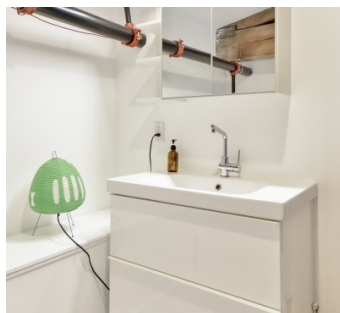
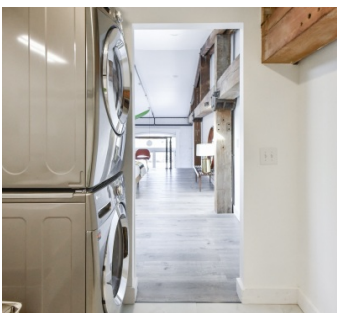
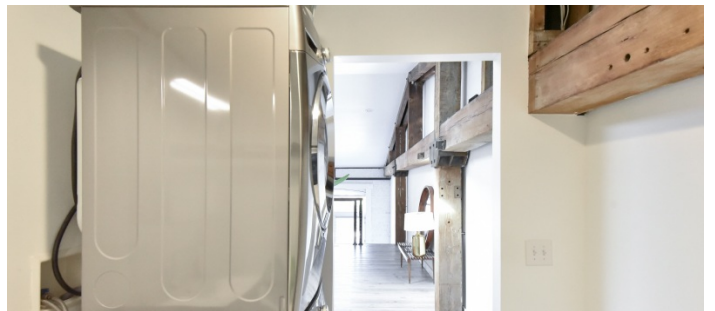


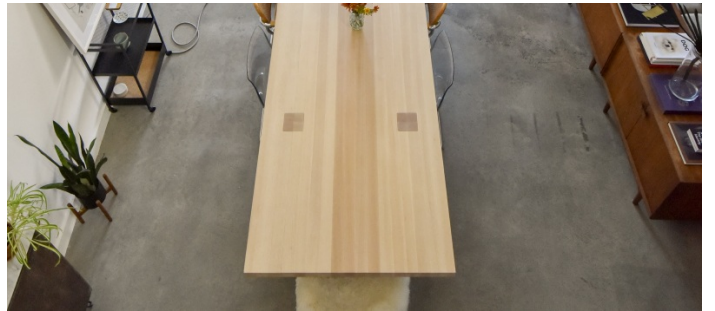
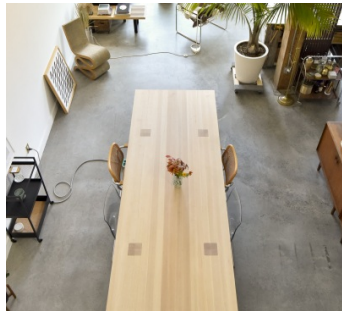
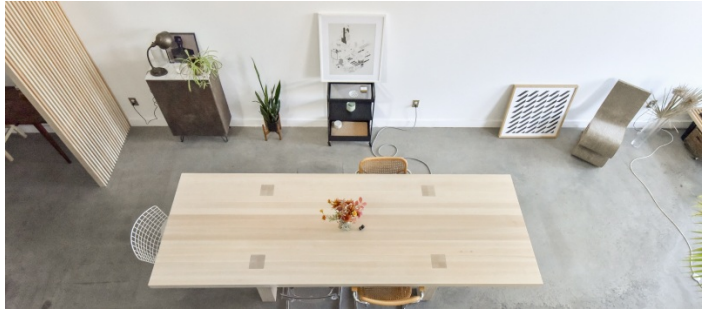
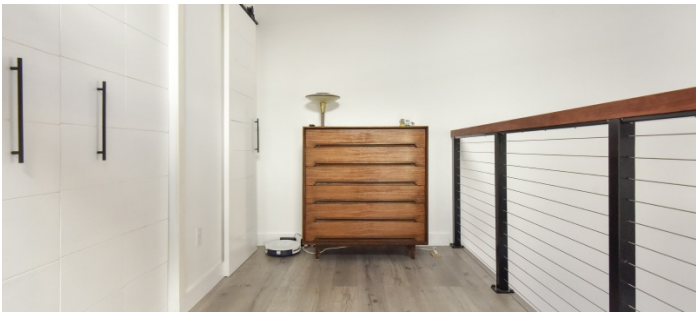






2ND FLOOR BEDROOM







LAWN AND PAVED AREA (SEPARATE CLEARANCE REQUIRED)

