

 LOCATION

Beacon, NY 12508

 DISTANCE FROM NYC

62 miles

 TAGS

Balcony, Bathroom, Bedroom, Deck, Exposed Beam, Exposed Brick, Kids Room, Kitchen, Living Room, Modern Contemporary, Skylight, Staircase, Staircase Ext, Terrace Patio

 SPECS

4,000 sq ft
33' ceiling height

 CATEGORIES

Apartment, Duplex, House, Loft, Warehouse / Factory Industrial

Notes

This 4,000 square foot space is a true designer loft where gorgeous original architectural details meet modern fixtures and amenities.

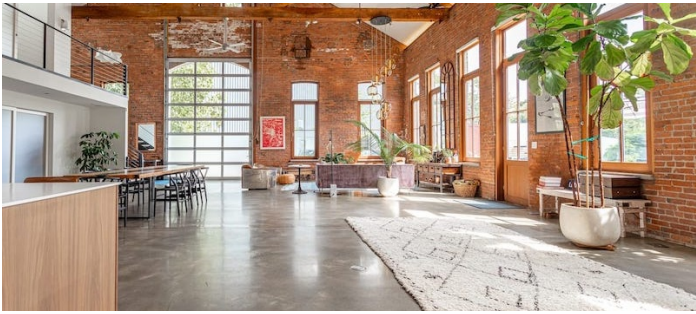
This converted 1860's brick factory space is flooded with natural light from over 20 large windows and a large glass garage door that opens right into the massive great room. The ceilings are upwards of 30 feet with original wood beams. The downstairs flooring is heated polished concrete with unique Moroccan rugs. The space is designed with custom lighting including floor uplighting on the brick walls and beautiful hand blown pendants.

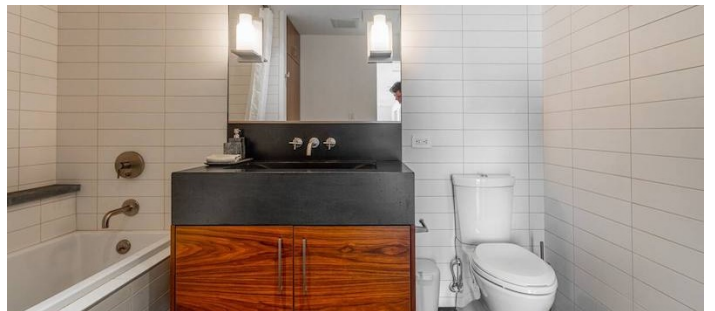
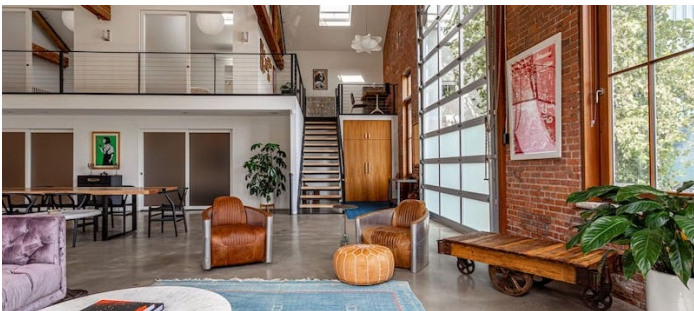
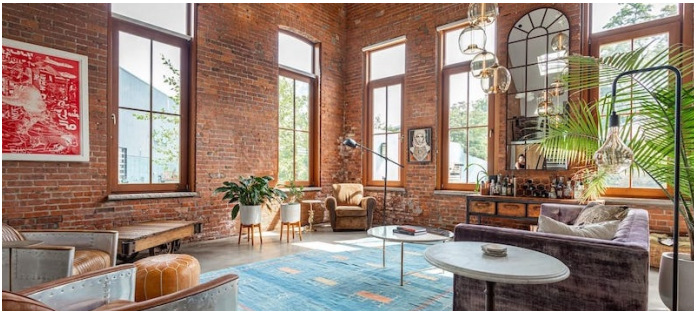
The custom kitchen is modern and equipped with top shelf appliances including SubZero fridge, Wolf stove and Miele oven and a huge kitchen island. Each upper bedroom has operable skylights with blackout blinds. The 2 renovated bathrooms are beautifully designed with fixtures by Porcelanosa.

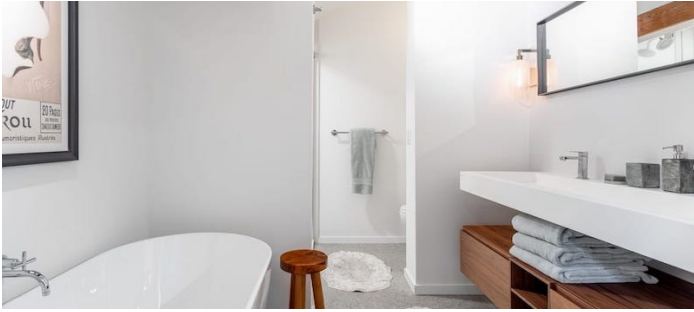
Outside, there is a newly installed Ipe deck, complete with Danish outdoor kitchen and fridge, overlooking a zen landscaped gravel garden.

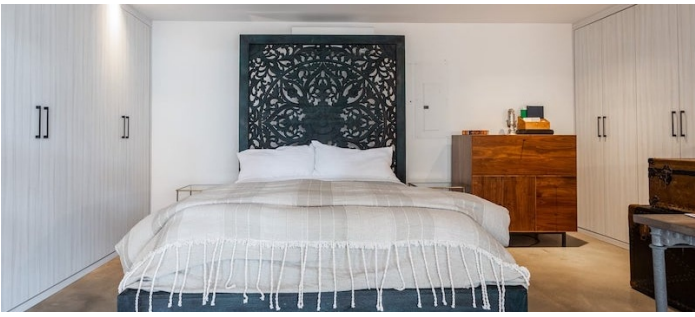
Restrictions:

No nailing into or painting of walls.









EXTERIOR

