

 LOCATION

Fairfield, CT 06825

 DISTANCE FROM NYC

58 miles

 TAGS

Backyard Lawn, Bar, Basketball, Bathroom, Bedroom, Colonial Federal, Colorful, Eclectic Quirky, Fence, Fireplace, Garage, Kids Room, Kitchen, Laundry Room, Library Room, Living Room, Modern Contemporary, Piano, Ping Pong Table, Porch, Sauna, Staircase, Stone Wall, Suburban, Sun Room, Terrace Patio, White Spaces, Wood Floor

 SPECS

Square Footage: 7,600

Ceiling Height: 9-10'

Acres: 2

Cocktail Capacity: 100

 CATEGORIES

Event Space, House

Notes

Perched on a hill with sweeping lawn and circular drive is a rare home with a storied history. This elegant property boasts vintage features meticulously renovated for today's contemporary living style with spacious rooms and cozy nooks. Classical architecture, quality finishes and fixtures abound. The flowing grand entertaining spaces recall the glory days of Hollywood.

The spacious living room with fireplace, beams and built-ins and large 3 season sun room with cathedral ceiling provide access to outdoor living spaces. Butler's pantry & spacious eat-in kitchen feature glass cabinetry, limestone floor/counters, large island and gas fireplace.

The second level features large master suite with dressing room, guest suite, office and two additional 2 bedroom suites with baths.

Accessed from rear stairs is 3rd third floor flex space.

Lower level has bar room, sauna, half bath, workshop, abundant storage and access to garage.

Numerous French doors on the first level open to private rear grounds with stone patios & magnificent water feature.

Note: Outdoor pool is being renovated and should be available in summer 2022.

Restrictions:

Prefer no shoes worn inside (bring booties); floor protection required.

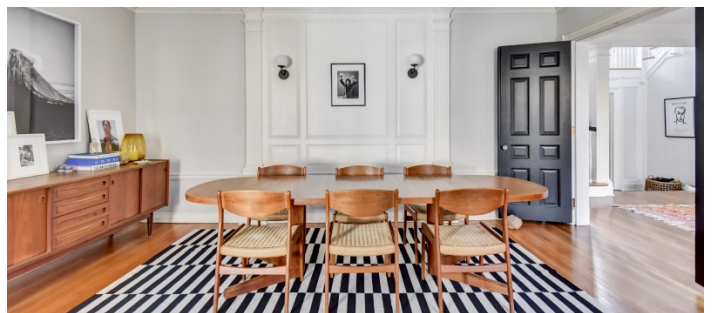
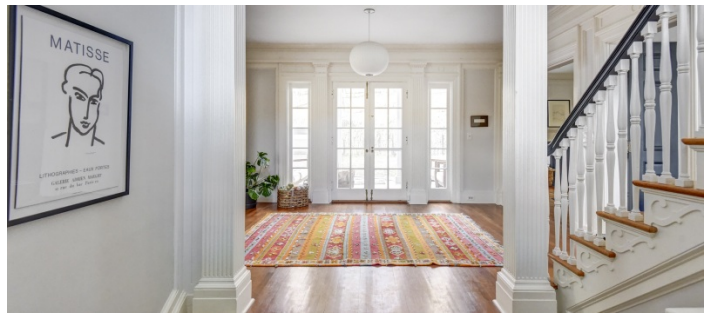
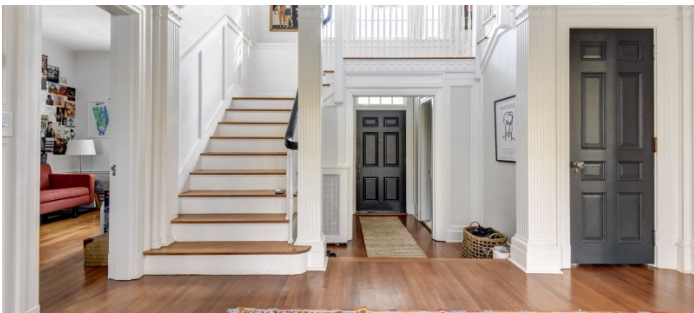
Nailing in walls permitted with owner's prior permission and as long as restored to original condition. Painting of walls to be allowed on case by case basis with owner's prior permission.





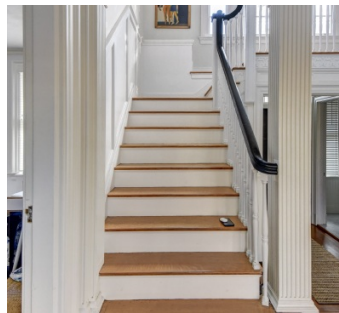
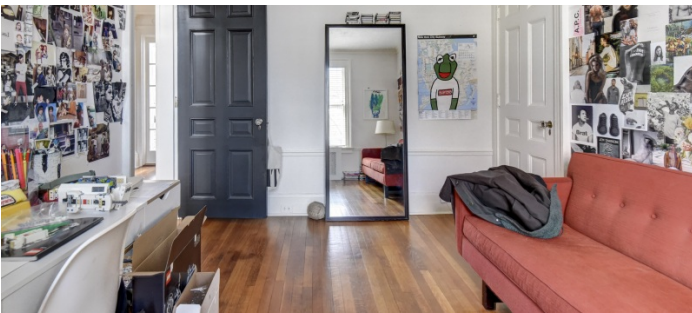
1ST FLOOR



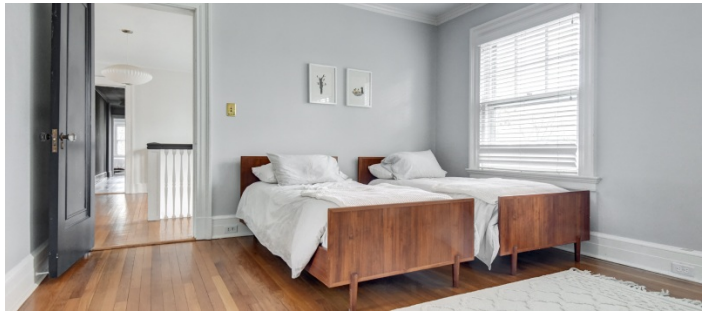
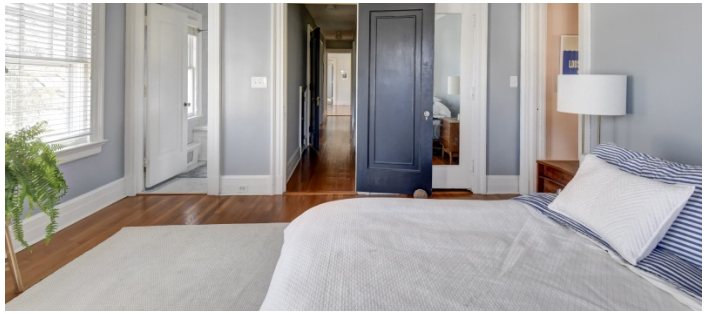


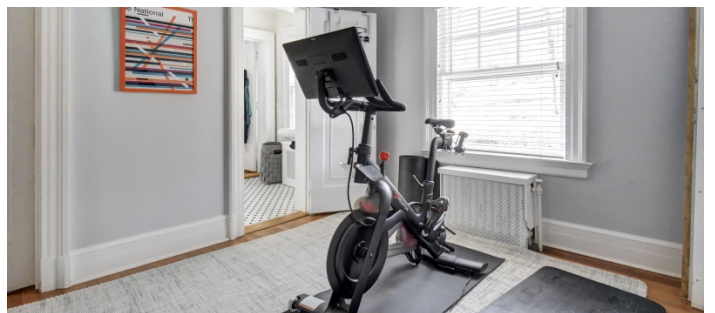
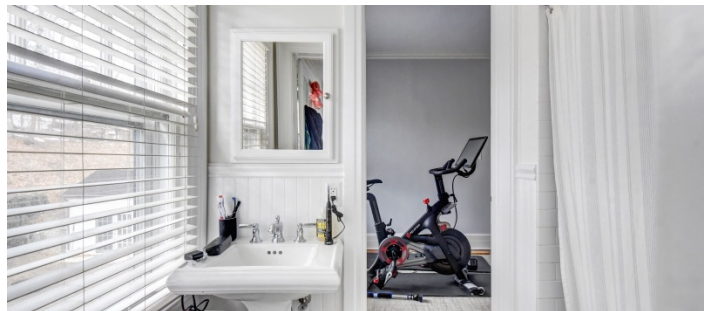
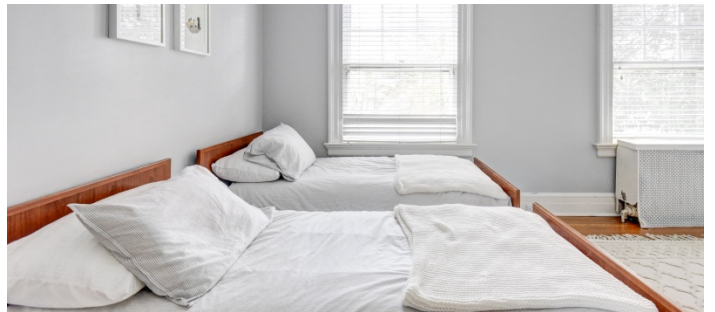


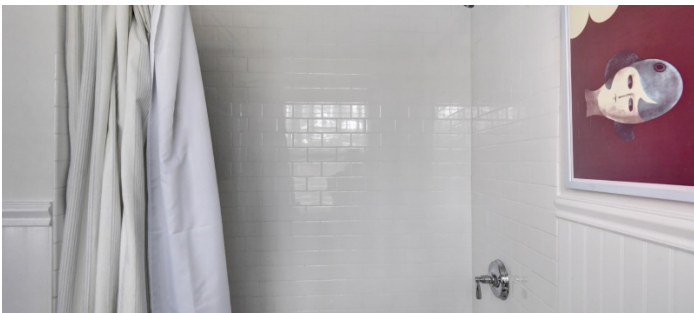
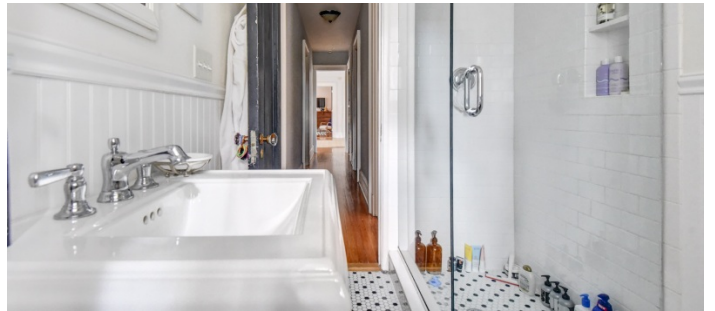




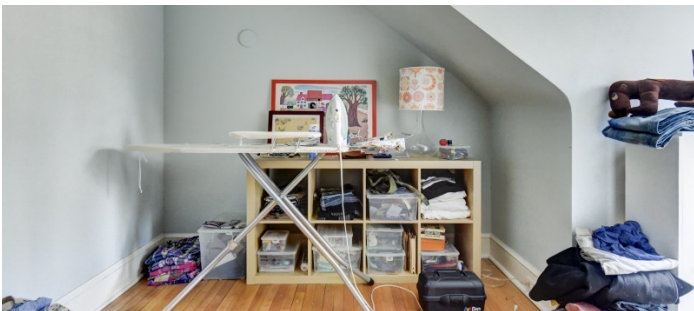
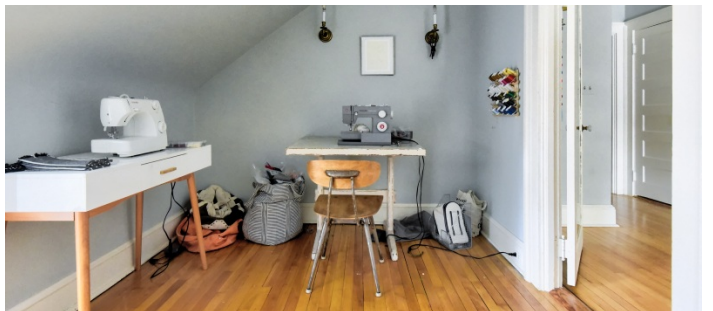
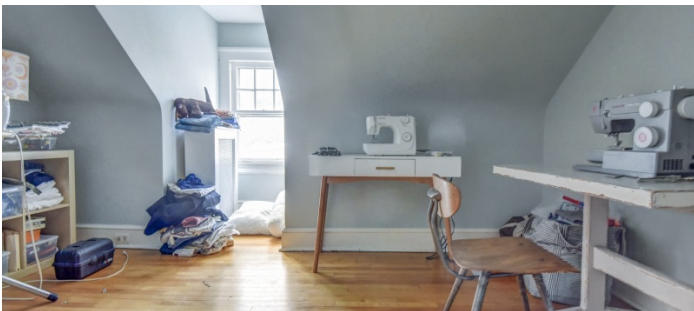
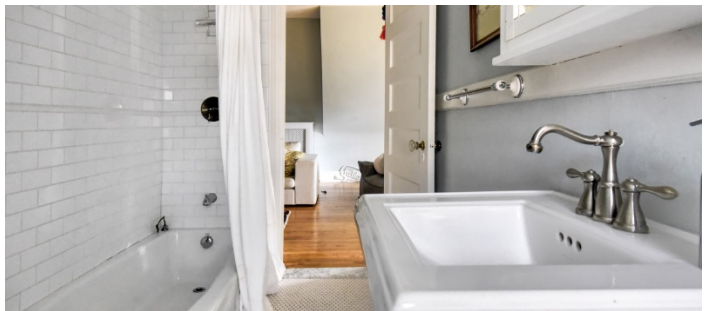
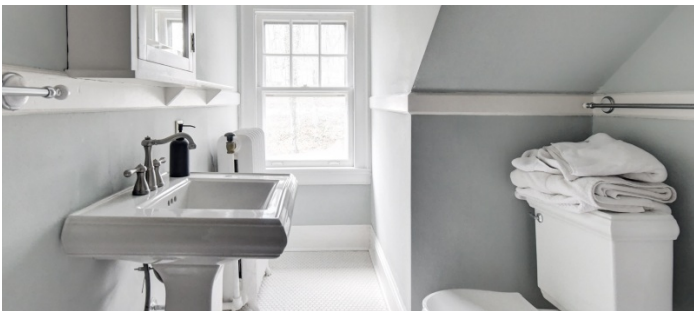
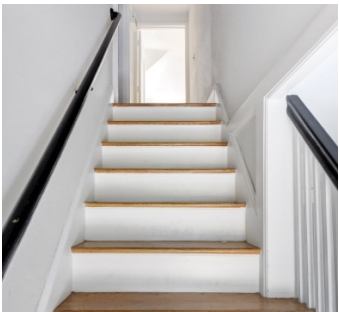
2ND FLOOR

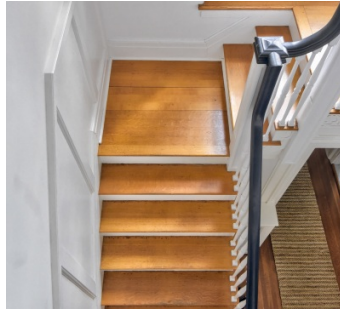




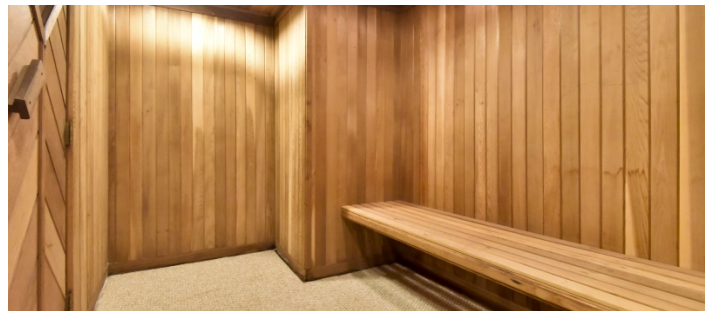
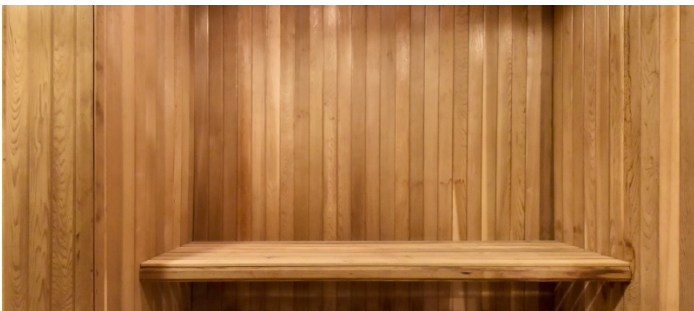
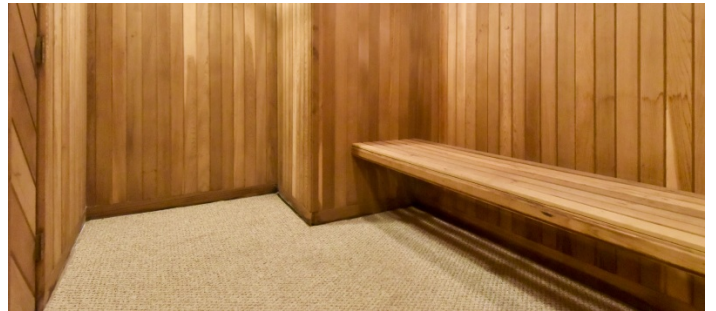








BASEMENT - BAR + SAUNA



BASEMENT - STORAGE + GARAGE

