

 LOCATION

Kintnersville, PA 18930

 DISTANCE FROM NYC

80 miles

 TAGS

Backyard Lawn, Bar, Barn, Bathroom, Bedroom, Eclectic Quirky, Exposed Beam, Fence, Fields, Fireplace, Floor to Ceiling Windows, Garden, Kitchen, Laundry Room, Living Room, Modern Contemporary, Pool Outdoor, Porch, Rustic, Skylight, Stable, Staircase, Tennis Court, Terrace Patio, Wood Floor, Woods

 SPECS

House: 6,800 sq ft
Arena: 15,000 sq ft
Barn: 3,500 sq ft
Poolhouse: 450 sq ft
42 acres

 POWER

Main: 200, Arena: 400, Barn: 400 (soon)

 CATEGORIES

Barns, Farm, House

Notes

Perfect blend of rustic charm and modern elegance in this breathtaking property, originally an 1800s Amish Barn transported from Lancaster and transformed into a stunning, open space. Nestled on 42 acres of picturesque land, this property boasts a magnificent 6,800 square foot residence that embodies rustic chic.

Sun-filled open floor plan, soaring ceilings with exposed beams and large windows offer breathtaking views of the surrounding grounds. The main living space is highlighted by a two-story great room, a dining room, and a chef's kitchen with sleek Ligne Roset light fixtures. The walls are made from reclaimed wide plank barn floor boards; the finished concrete floors have radiant heat. There are two large sliding barn doors leading to a luxurious ground floor master bedroom suite, a dressing room and a spa-quality bathroom. There's a third, very large sliding barn door leading to an 1870's bar. Soaring open staircase leads to loft-style second level with art studio and office that overlook the first floor.

There's a natural style in ground pool with a gorgeous wooden pool house and a bar overlooking the area. There's a tennis court with large green vines topping the single sided fencing.

Across from the main house is a state-of-the-art equestrian facility, complete with a large indoor arena, six horse stalls, an outdoor riding ring, and five fenced paddocks. This 15,000 sq ft space has an insulated ceiling, 400 amps of electricity and an office/studio apartment.

Leading from the house into a paddock is an original 1800's tack barn with 2 levels (1,800 sq ft on each floor). The bottom level has original stone walls and the upper level is a gallery with an open floor plan that contains a tool station, hay storage, various machines and a tractor. There's another building with three classic style barn stalls painted in calm neutral colors.

There are five beautiful open fields with varying landscapes, a forest with impressive trees and a charming collection of sheep, goats, and chickens.

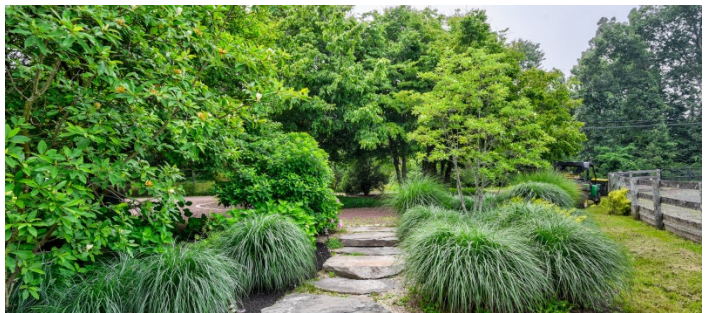
There is ample parking available for over 30 vehicles, and a Tesla charging port on-site, highlighting the property's commitment to modern convenience.

Restrictions:

Shoes allowed inside if wearing booties. Floor protection for wood floors.

Requests to paint or nail into walls must be approved in advance by owner (case by case basis). Walls must be returned to original condition upon project completion.



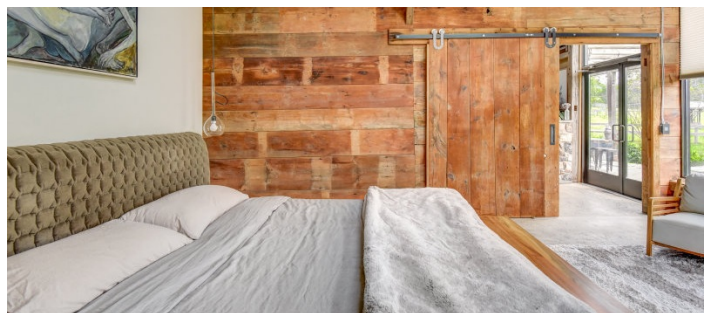
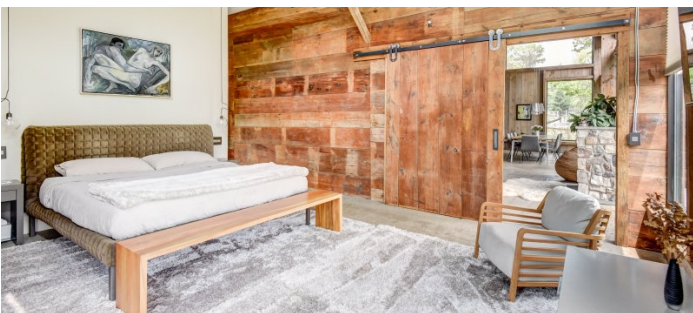
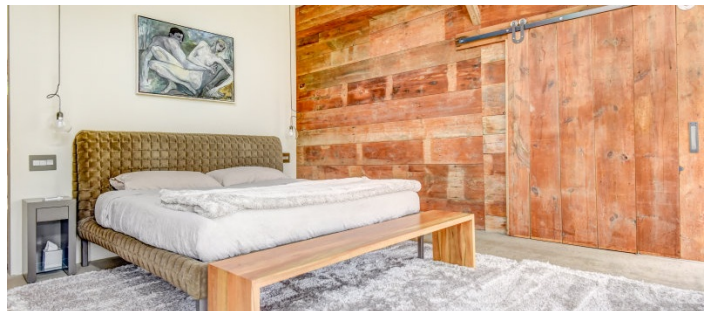


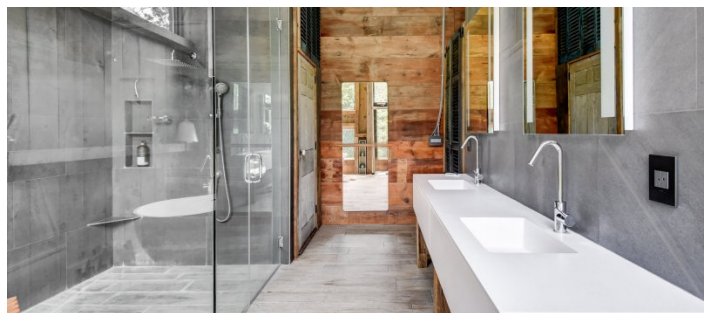
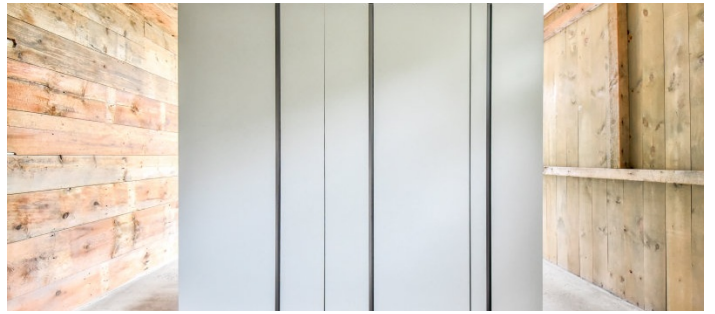


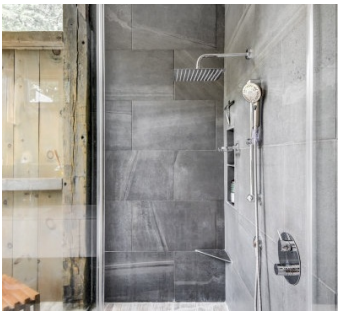


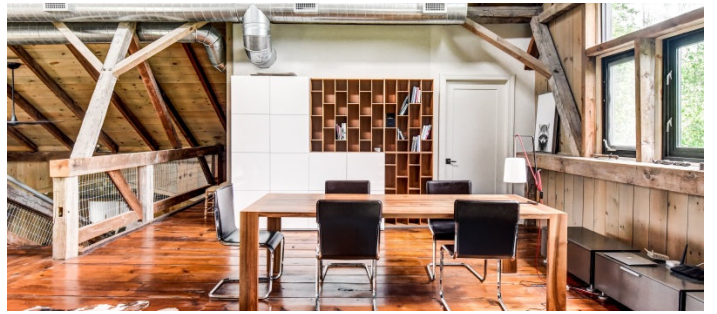


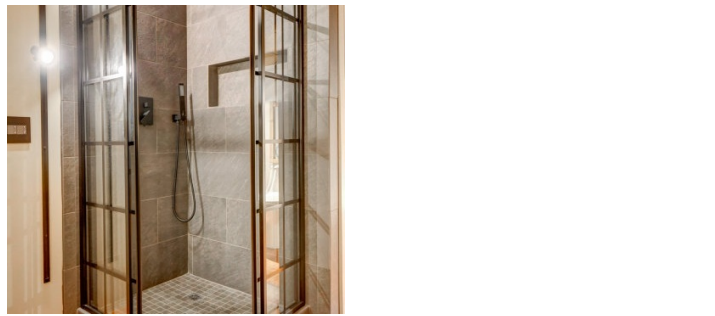




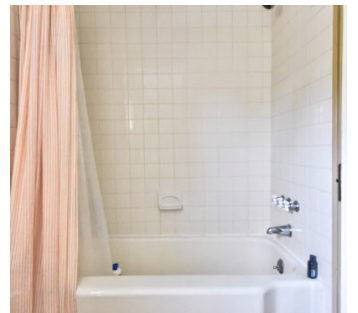
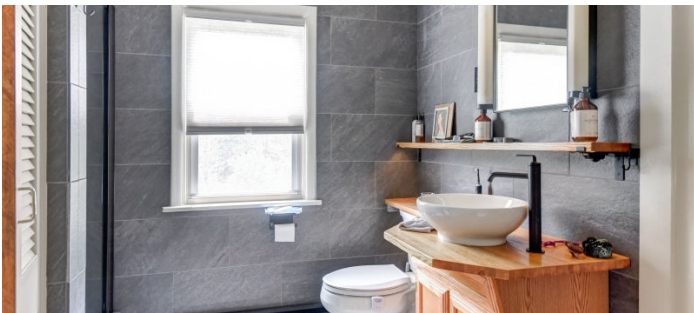


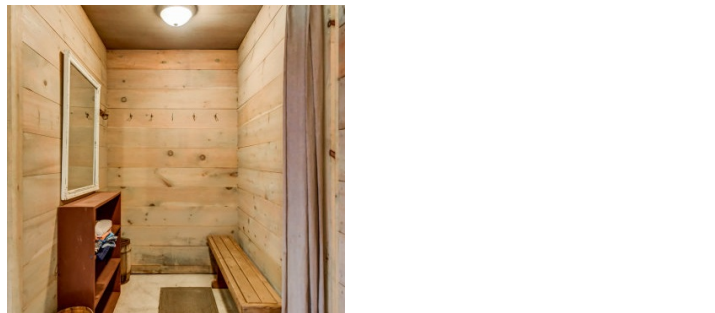






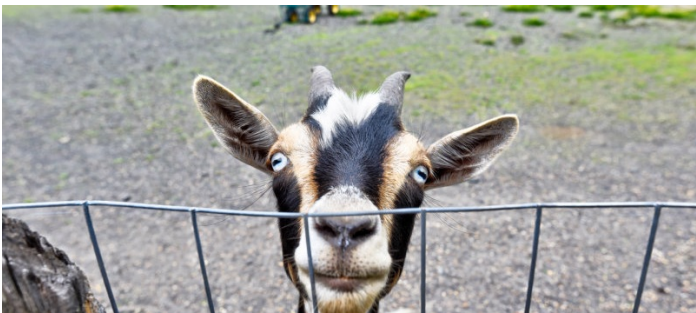






TENNIS COURT









STABLE



