

 LOCATION

Brooklyn, NY 11216

 TAGS

Bar, Bathroom, Bedroom, Fence, Fireplace, Garden, Kids Room, Kitchen, Library Room, Living Room, Modern Contemporary, Skylight, Stained Glass, Staircase, Terrace Patio, White Spaces, Wood Floor

 SPECS

3,200 sq ft (800 sf per floor)
9'-14' ceiling height

 CATEGORIES

* In the Zone, Apartment, Brownstone, Townhouse

Notes

Newly renovated, light-filled 4-story townhouse in Bed-Stuy with original moldings throughout. Artwork includes Nan Goldin and Tomas Watson; furniture includes Christian Liagre, Axel Wervoordt, Guglielmo Ulrich.

14' ceiling height on parlor level, 12' ceiling height on upper floors. Some windows have stained glass.

2 living rooms, drinks bar, 4 bedrooms, 4 full bathrooms, 2 half bathrooms, 5 fireplaces

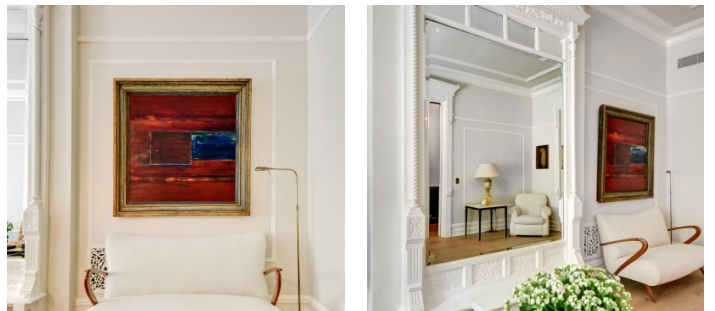
Restrictions:

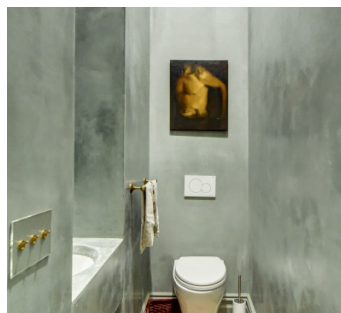
Booties must be worn over shoes.

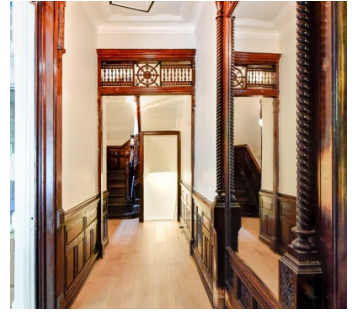
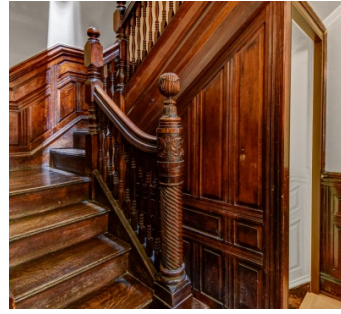
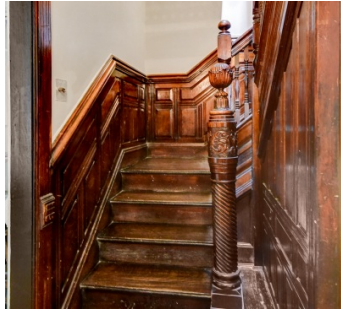
Request to move artwork or furniture must be approved in advance by owner or site rep.

No painting of walls. Requests to nail into walls must be approved by owner in advance and returned to original condition.

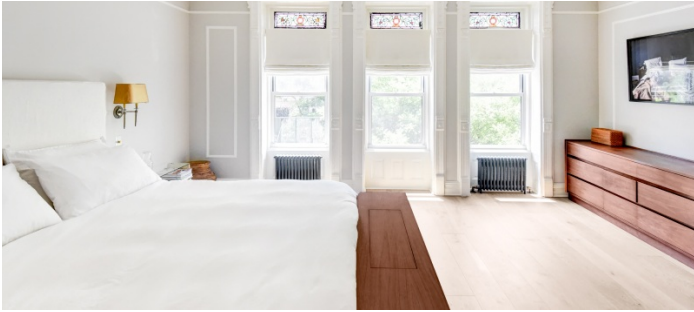
Master bedroom closet and bathroom are off limits.

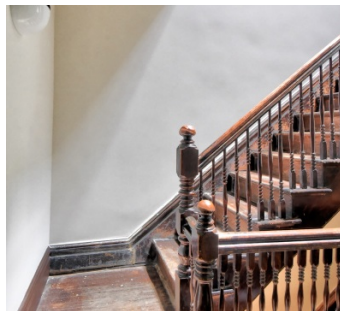
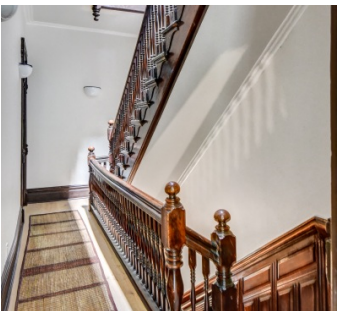
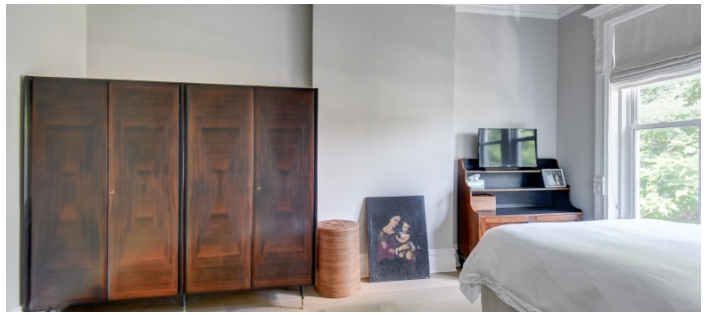
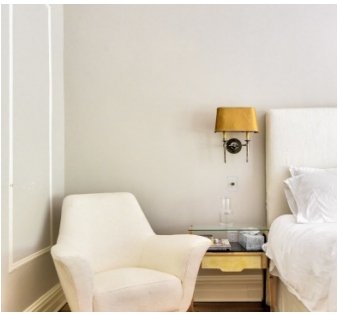


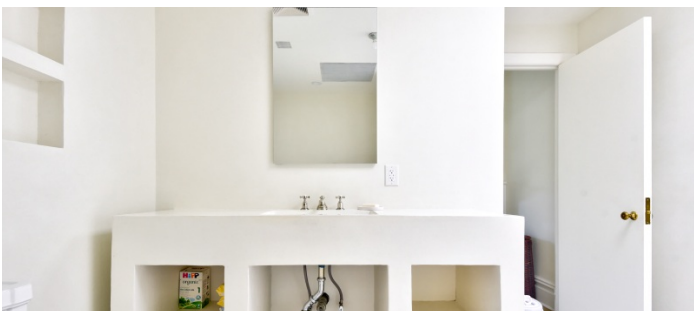
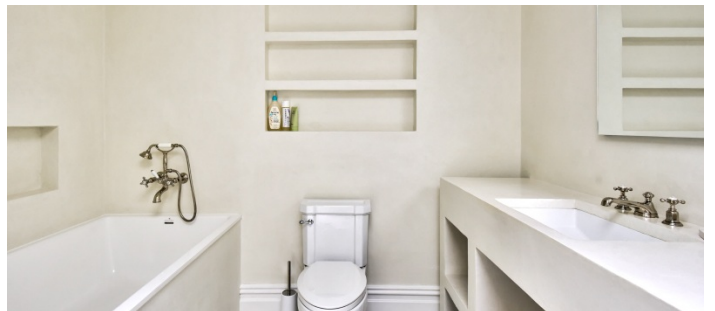
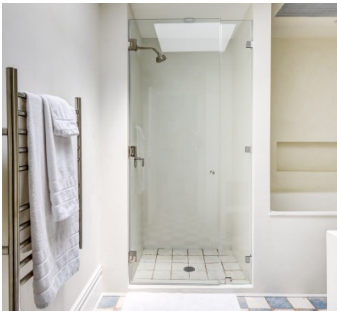
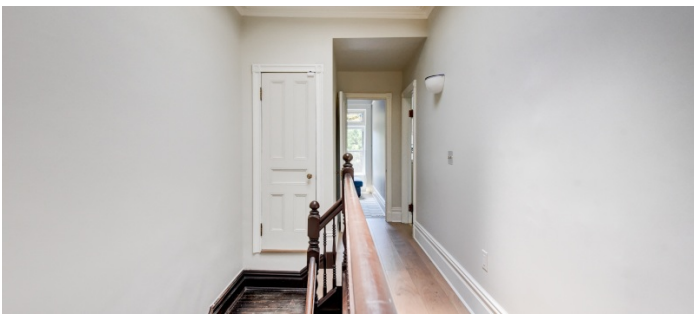


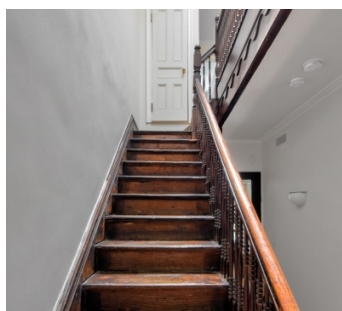
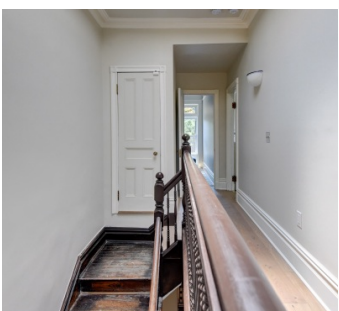
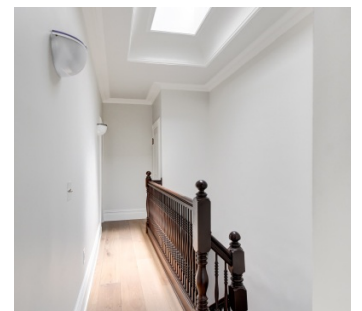
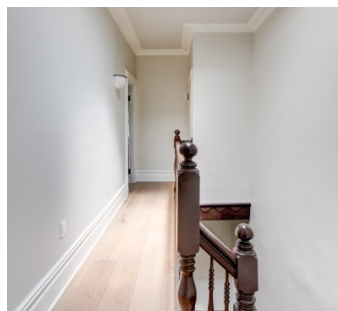
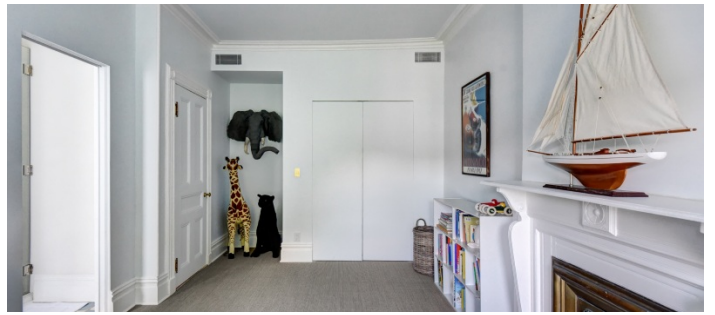


2ND FLOOR

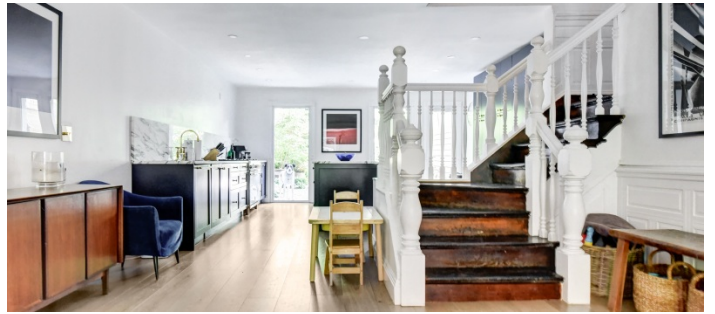
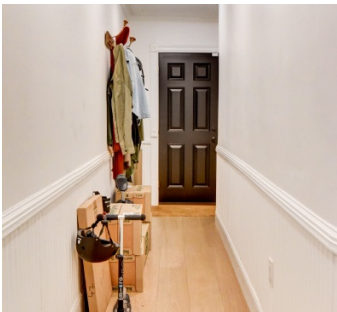


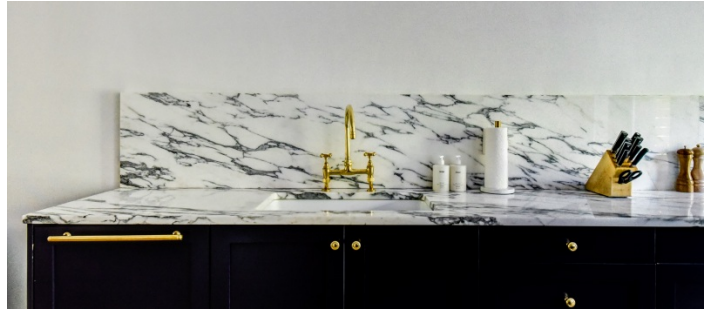






GARDEN FLOOR





EXTERIOR

