

 LOCATION

New York, NY 10013

 SPECS

2,900 sq ft - Apartment
2,000 sq ft - Roof Garden Terrace
12' ceiling height

 TAGS

Bathroom, Bedroom, City View, Eclectic Quirky, Elevator, Floor to Ceiling Windows, Garden, Kids Room, Kitchen, Living Room, Modern Contemporary, Rooftop, Skylight, Staircase, Staircase Ext, Terrace Patio, Wood Floor

 CATEGORIES

* In the Zone, Apartment, Penthouse

Notes

Two story penthouse loft apartment in a 16 unit Tribeca building. The apartment is all about the light. Glass doors with skylights cover most of the apartment.

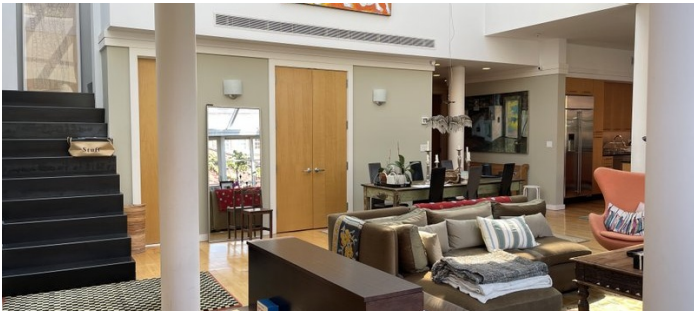
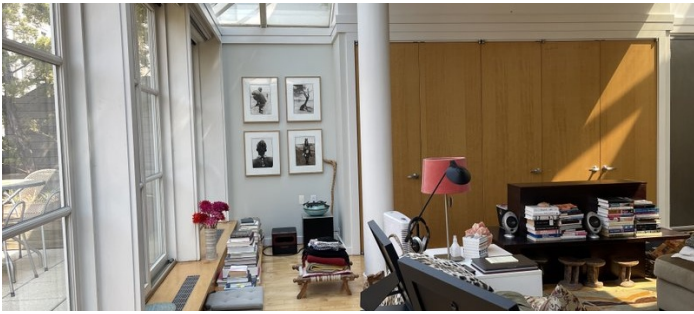
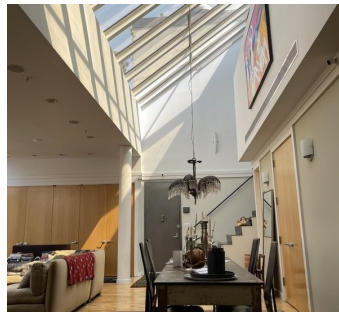
The apartment layout has large chefs kitchen and 3 bedroom and 3 1/2 baths. The kitchen and living dining space all go out to a landscaped roof garden.

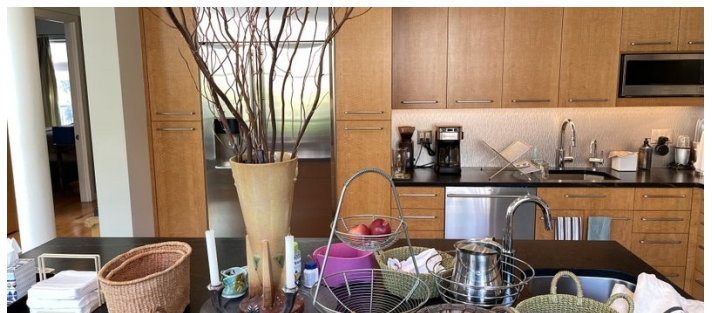
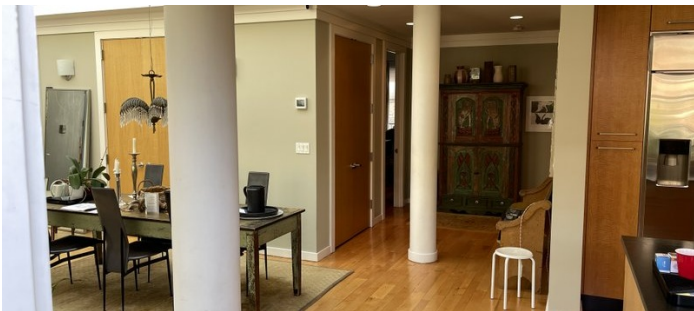
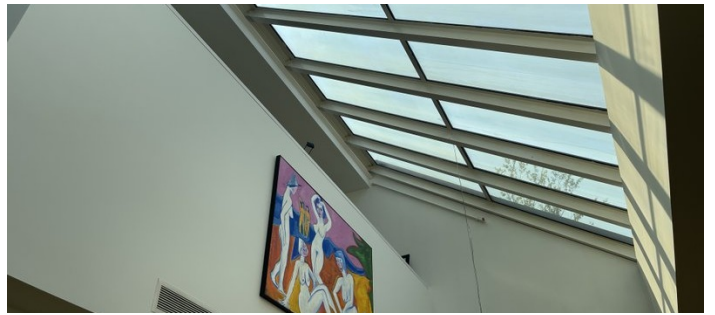
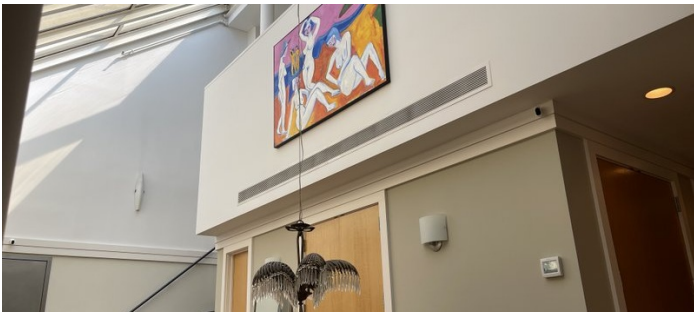
Second floor has a large orange bedroom with a full bathroom. Second floor also has skylight and glass doors going out to a second floor roof garden with an arbor with seating below and a zen fountain.

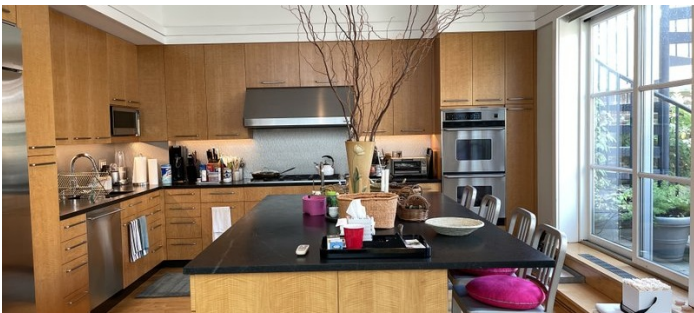
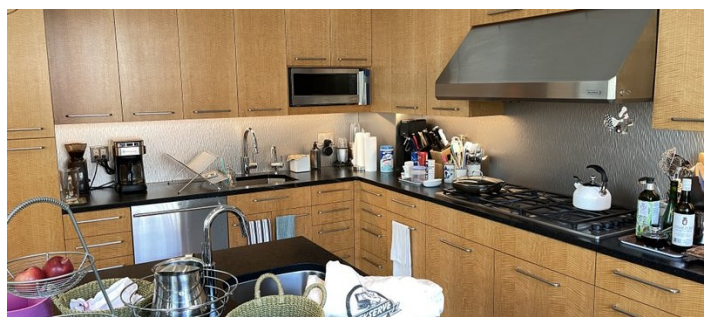
Restrictions:

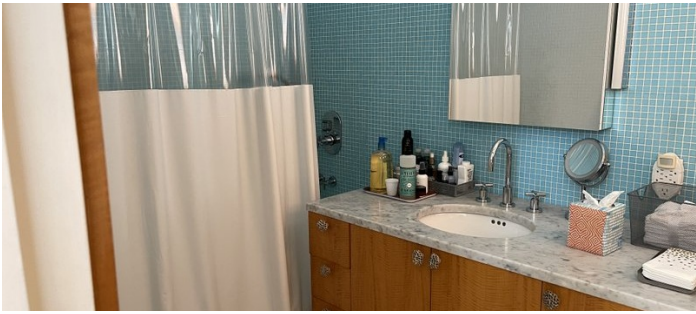
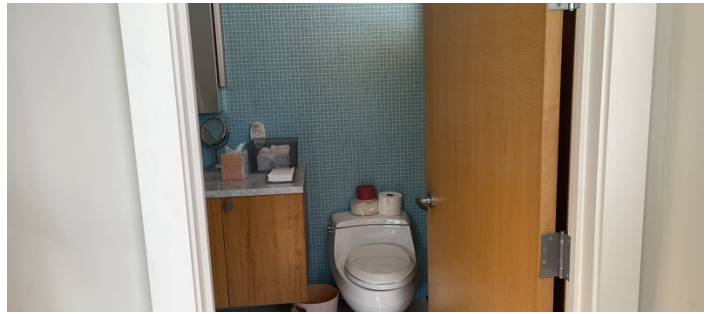
Building requires additional condo fee.

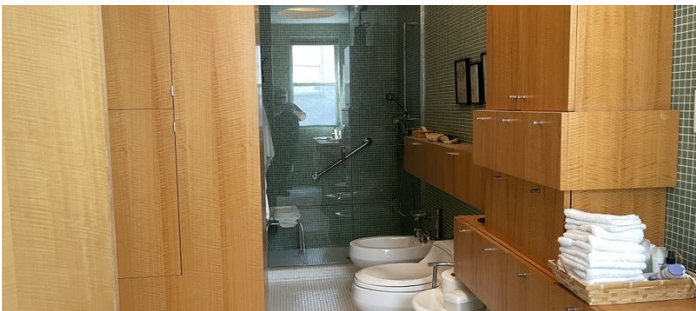
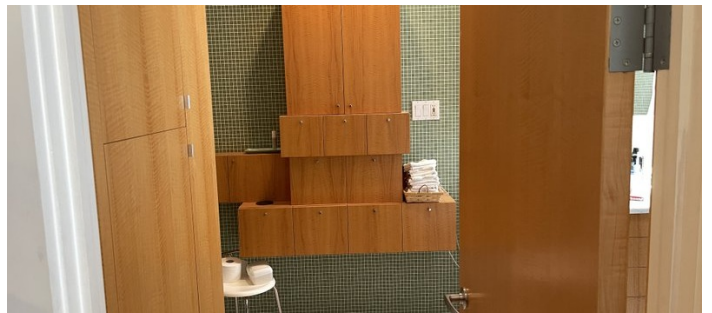
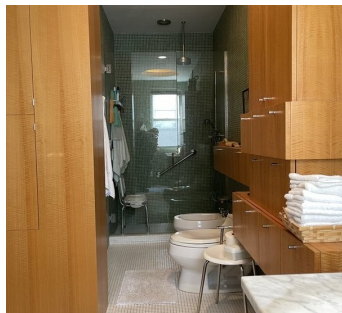
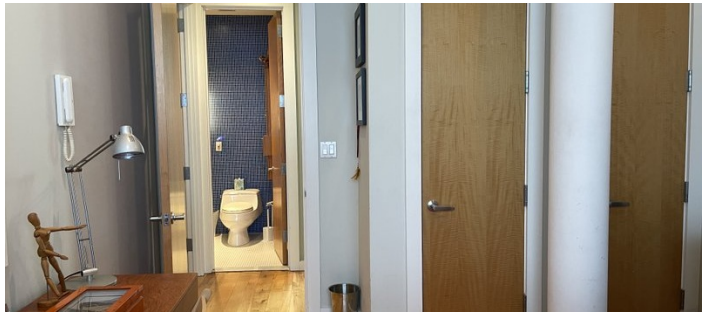
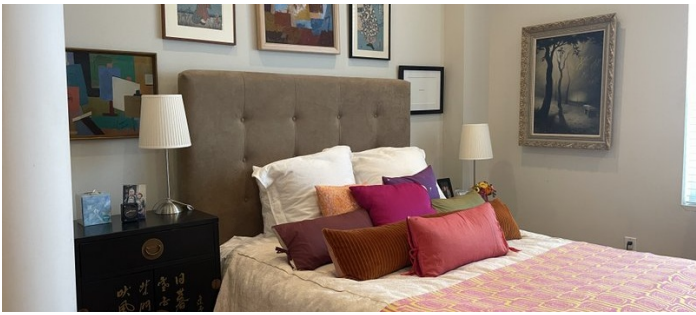
Possible shoot hours are 7am to midnight. No shoots from midnight to 7am.

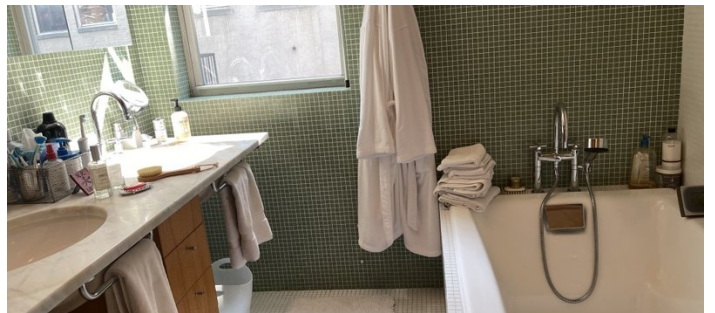
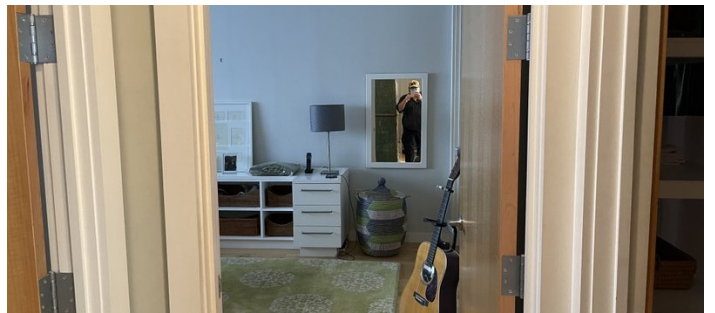
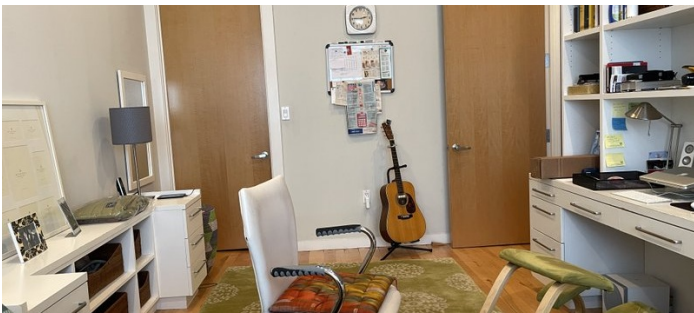
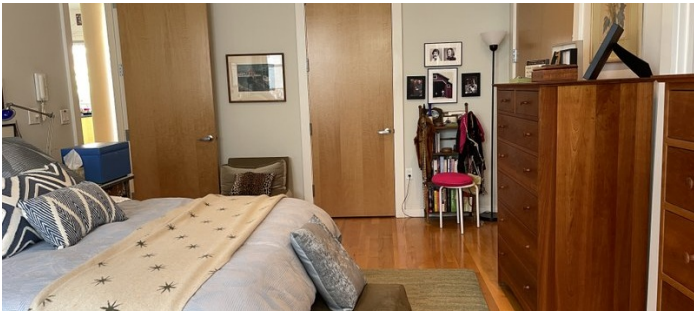


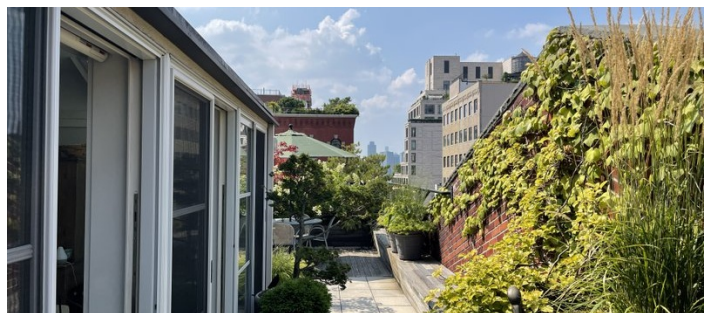
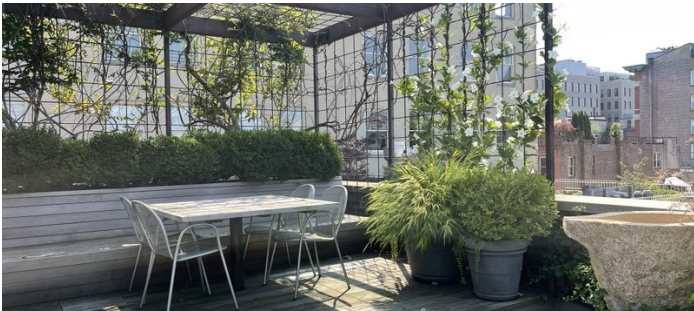


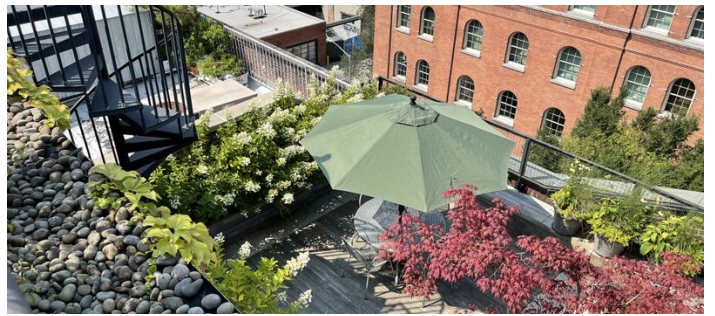
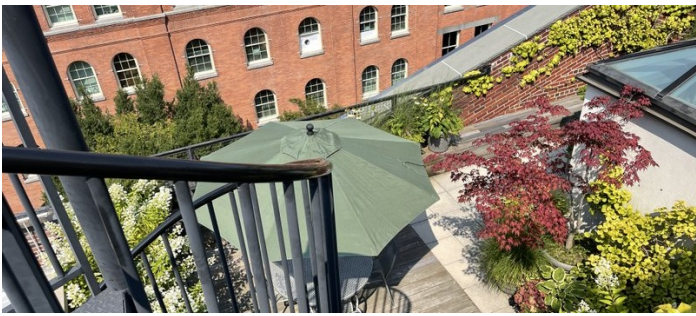
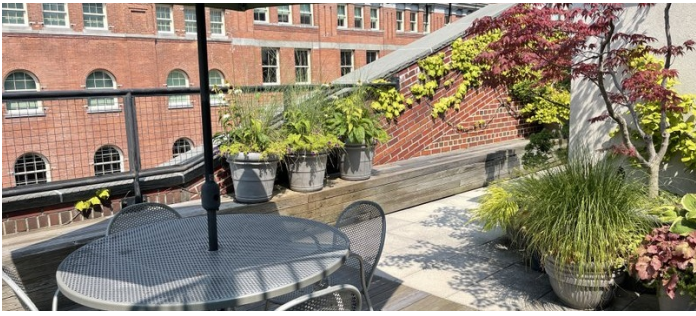












LOBBY AND ELEVATOR (BUILDING CLEARANCE REQUIRED)

