

 LOCATION

New York, NY 10013

 TAGS

Backyard Lawn, Bar, Bathroom, Bedroom, Billiard Table, City View, Colorful, Deck, Eclectic Quirky, Elevator, Fire Escape, Fireplace, Floor to Ceiling Windows, Garden, Kids Room, Kitchen, Living Room, Modern Contemporary, Pool Outdoor, Rooftop, Skylight, Staircase, Staircase Ext, Terrace Patio, Walk-in Closet, Wallpaper, Water Tower View, White Spaces, Wood Floor

 SPECS

5,300 sq ft (interior)
2,500 sq ft (exterior)
8.5' to 14' ceiling height

 CATEGORIES

* In the Zone, Apartment, Loft, Penthouse, Roof Top

Notes

The Penthouse is located on the top 3 floors of the oldest cast iron building in NYC. Located in Tribeca South Historic District, this expansive loft features 5,300 sq ft interior, 2,500 sq. ft exterior spread across 3 levels.

Interior features include a huge fireplace, custom Vladamir Kagan furniture, custom bar, 9' pool table, 6 door wine cellar, Gaggenau kitchen, Panton lights, a 15 person dining room table, and a modern architectural staircase.

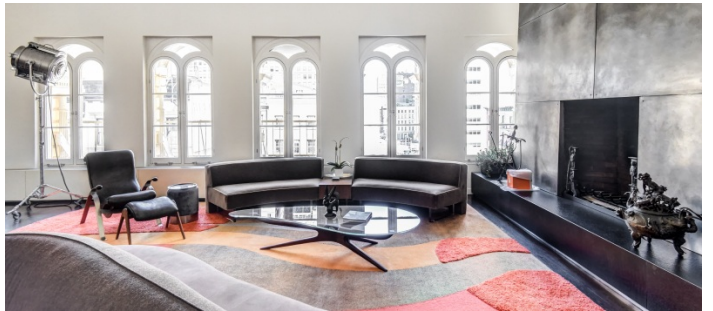
The first floor of the loft has 3 bedrooms, one full bathroom and one powder room. On the second floor, there is an expansive theater room with custom multicolor Vladimir Kagan sofa, Missoni carpet and floor to ceiling glass doors that open to the private sun deck. The master bedroom is located on the second floor of the loft complete with two large walk-in closets, modern Boffi bathroom with custom Sicis steam shower, bathtub and Japanese toilet. The master bedroom is bathed in light by two skylights and floor-to-ceiling sliding glass doors that open to the private sun deck and outdoor shower. An art deco office with a peloton and walking desk and custom Bisazza mosaic bathroom are also on the second floor.

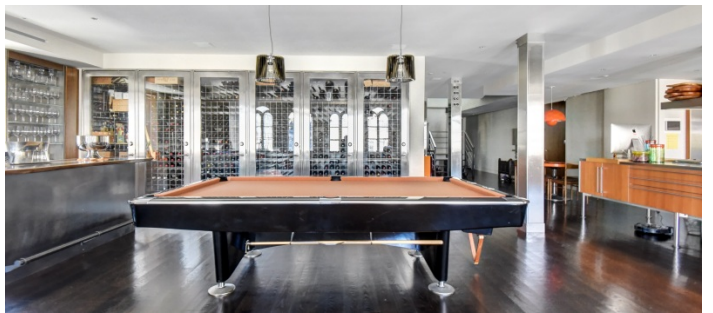
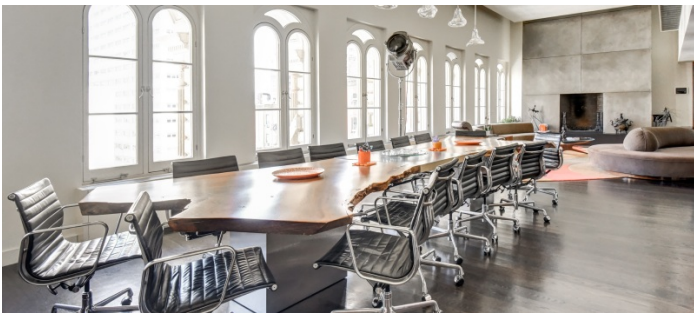
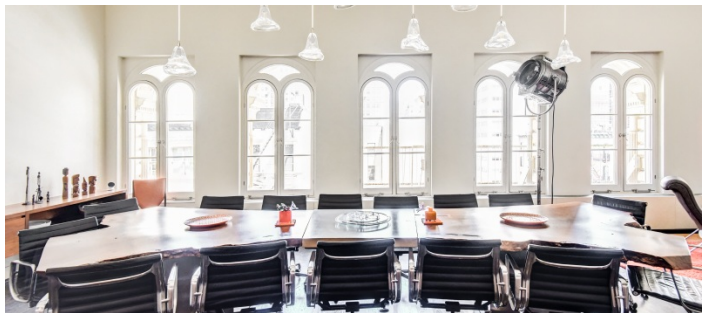
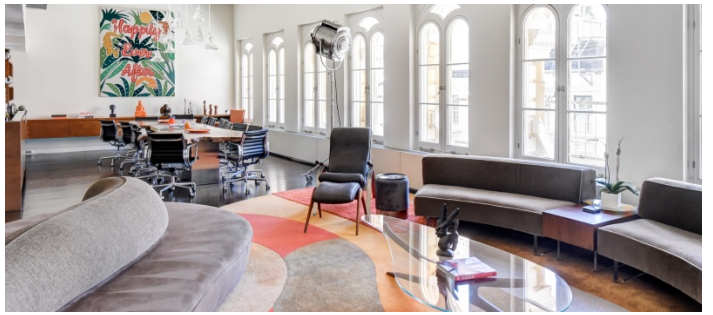
The spectacular multi-level private rooftop features fabulous unobstructed views uptown and downtown including World Trade Center, Woolworth Building, and Citibank Building. The upper level has a private infinity pool, ipe deck, 40' engineered grass yard, seating area, dining table, and BBQ, surrounded by landscaping. The outdoor lower level includes a seating area with ivy wall, outdoor shower, bamboo, and a large Japanese maple contiguous to the second floor of the loft.

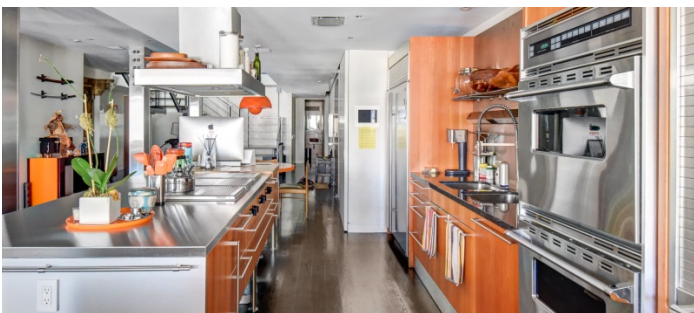
Restrictions:

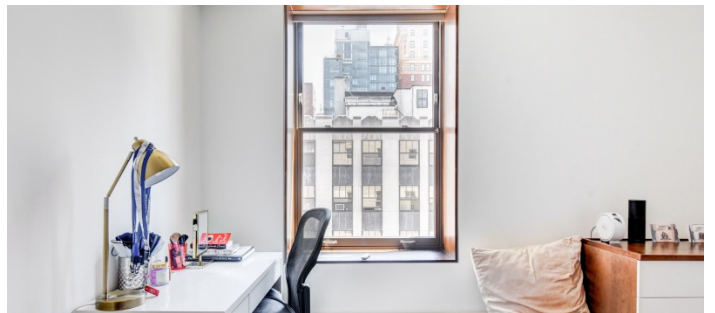
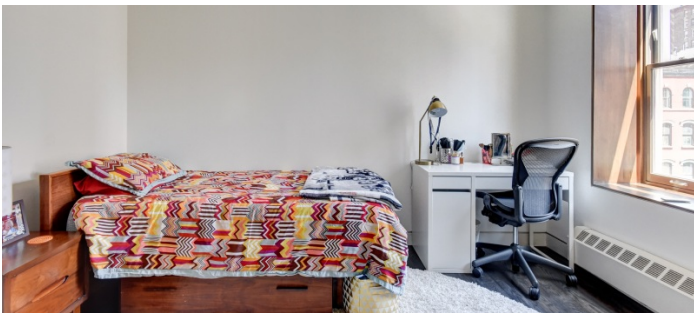
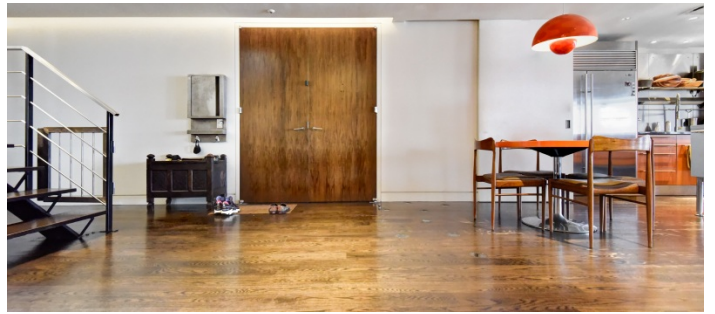
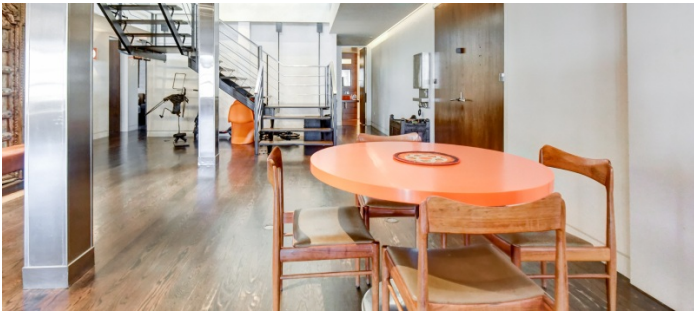
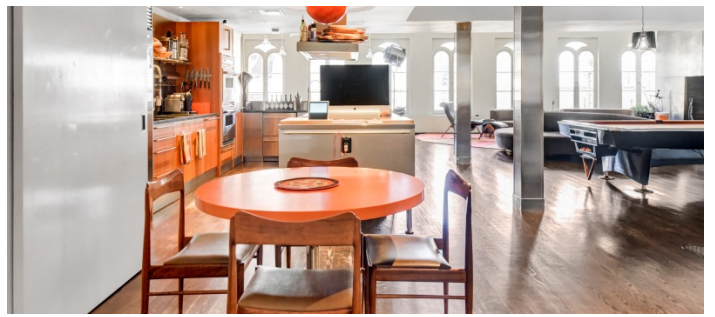
Requests to paint or nail into walls will be reviewed on case by case basis by owner; if approved, walls need to be returned to original condition.

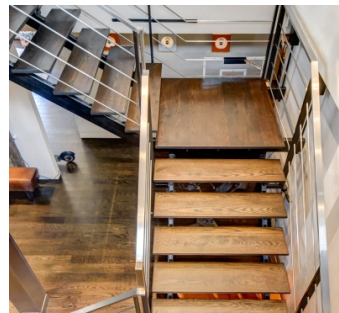
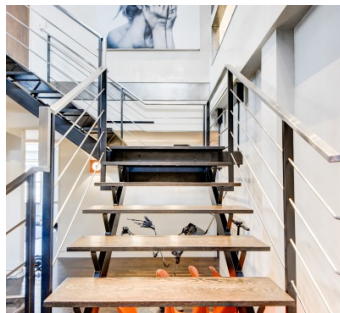
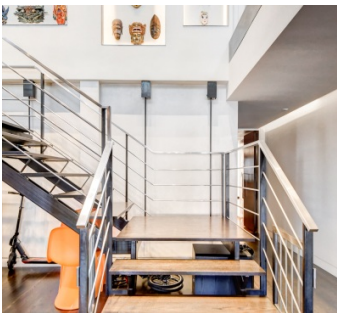
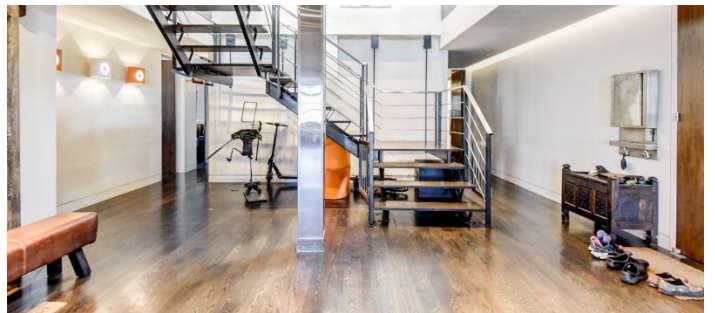
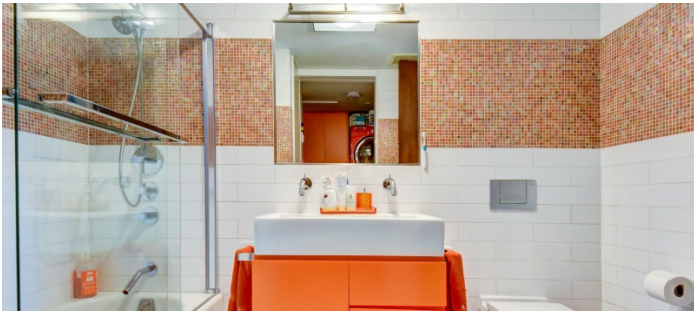
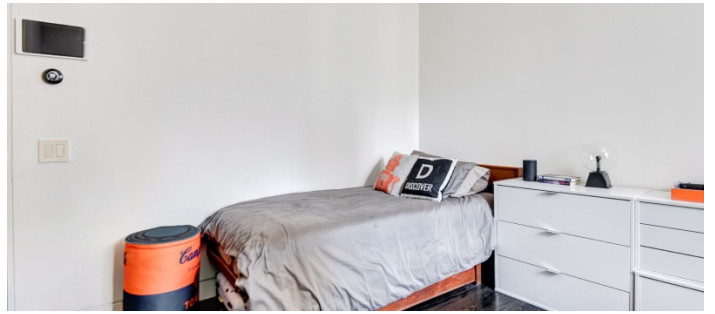
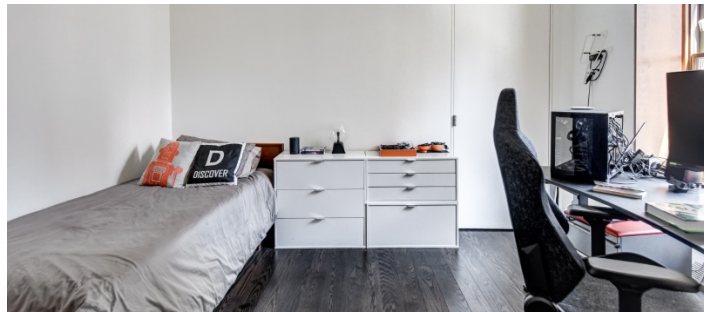
Requests to use fire escape must be approved in advance.



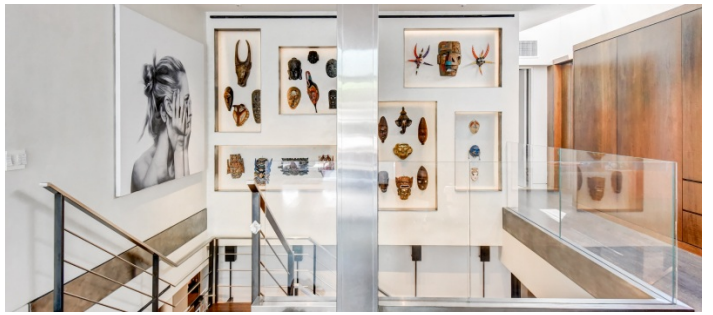
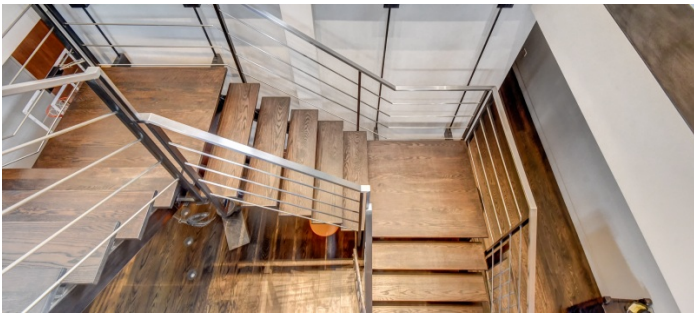


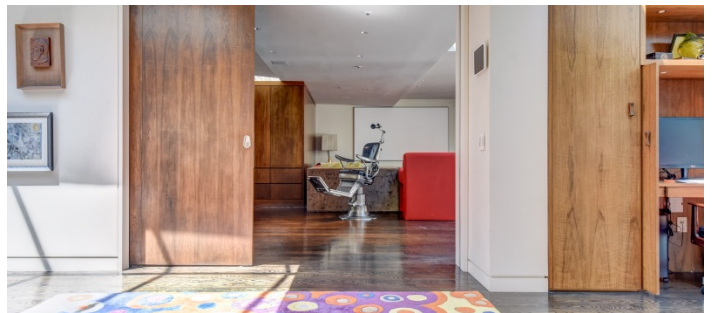
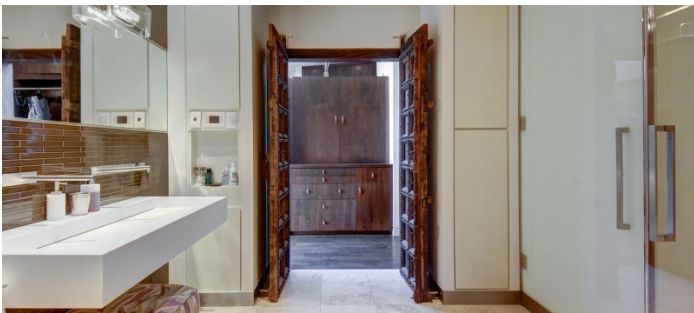
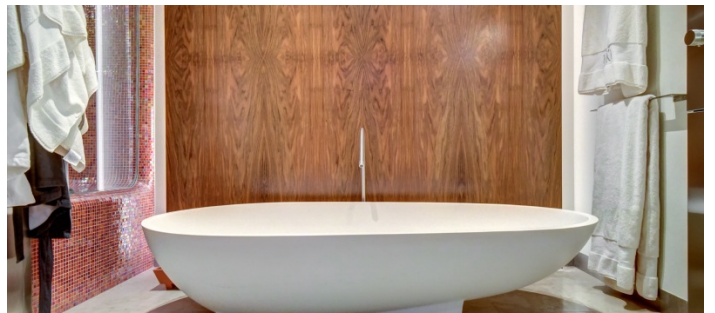
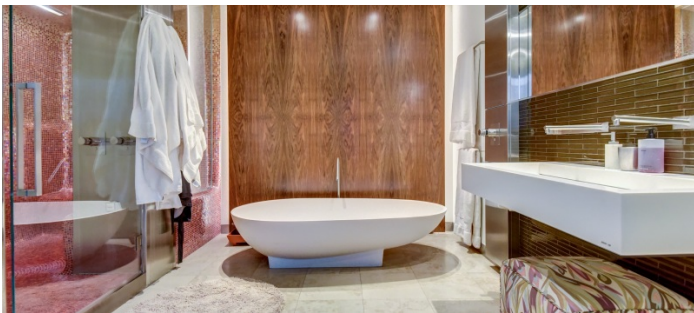


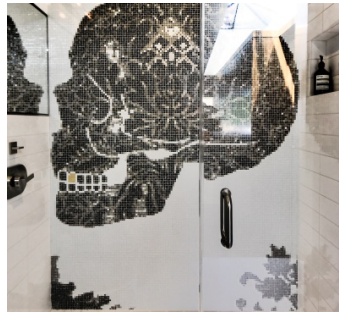
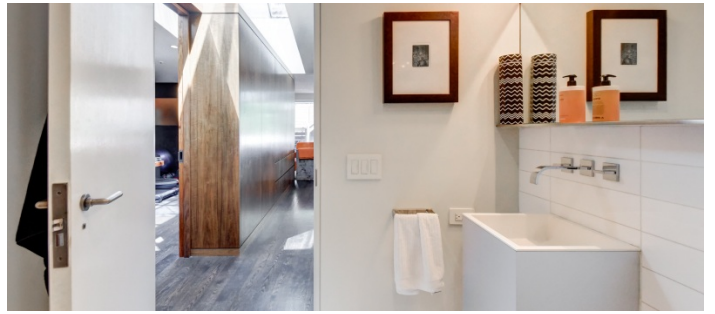




UPPER FLOOR







ROOFTOP - MUTLILEVEL TERRACE

