

 LOCATION

Stamford, CT 06902

 SPECS

8,000 sq ft

9'-12' ceiling height

 DISTANCE FROM NYC

36 miles

 CATEGORIES

\* In the Zone, House

 TAGS

Backyard Lawn, Balcony, Bathroom, Bedroom, Fireplace, Garage, Kids Room, Kitchen, Living Room, Modern Contemporary, Parquet, Porch, Sauna, Skylight, Staircase, Stone Wall, Sun Room, Terrace Patio, Traditional, Tudor, Walk-in Closet, White Spaces, Wood Floor

## Notes

Built in 1929, this expansive Tudor estate features spacious living, dining, bedrooms and tv room along with wine cellar & sauna. Interior stone and floor detailing throughout, stained glass window and original English windows throughout. Large half acre yard with grill, fire pit, mature trees, ivy, stone wall etc. Atmosphere of the English countryside.

Minutes from downtown Stamford, Greenwich and less than 1 hour from NYC.

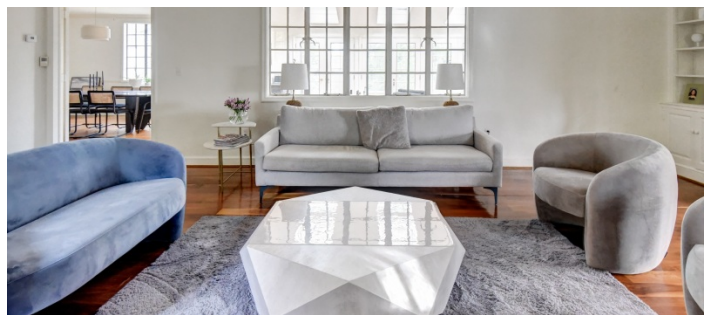
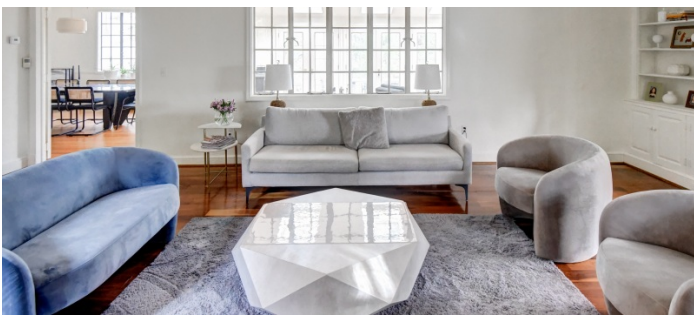
**Restrictions:**

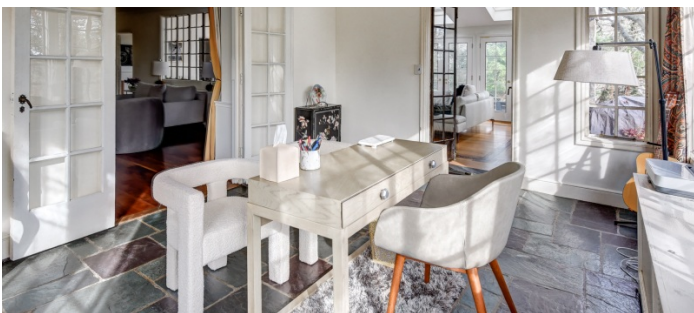
Requests to paint or nail into walls must be approved in advance by owner; walls must be returned to original condition.



1ST FLOOR





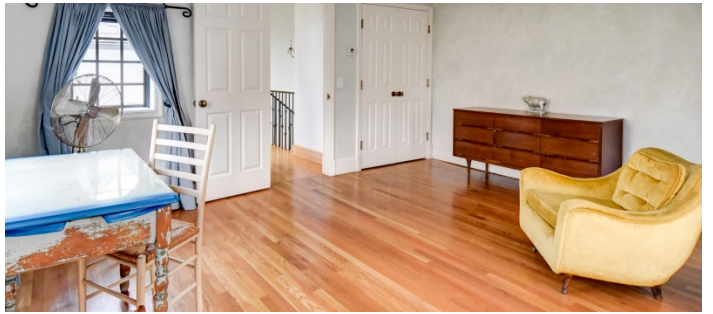


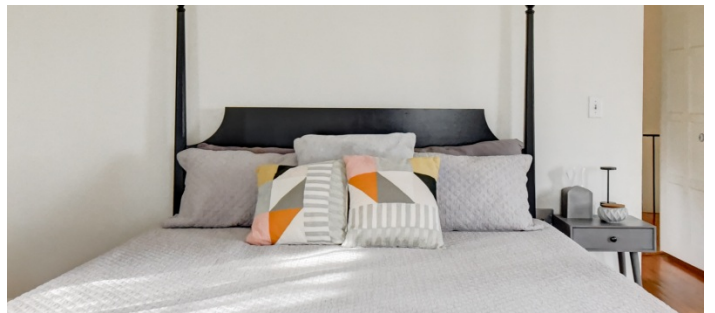
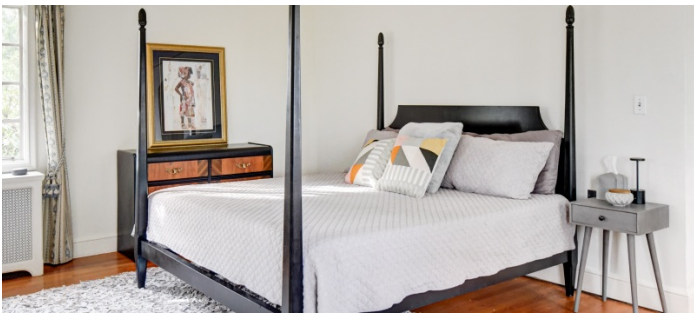
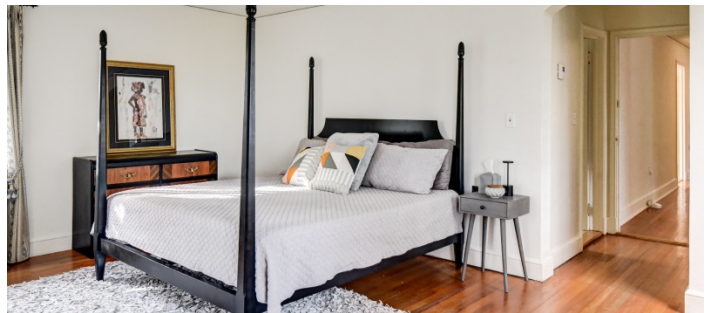
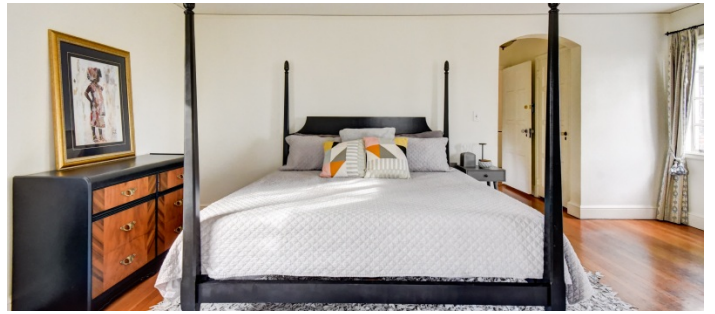


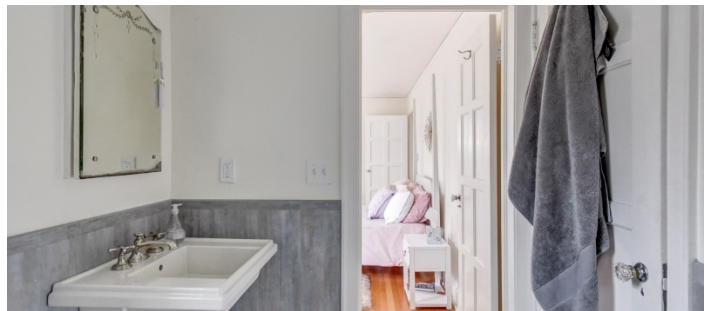


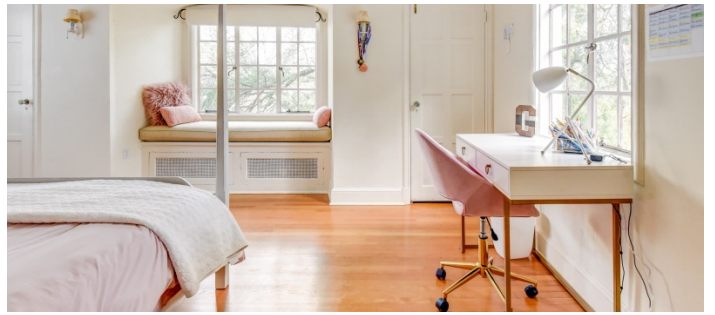


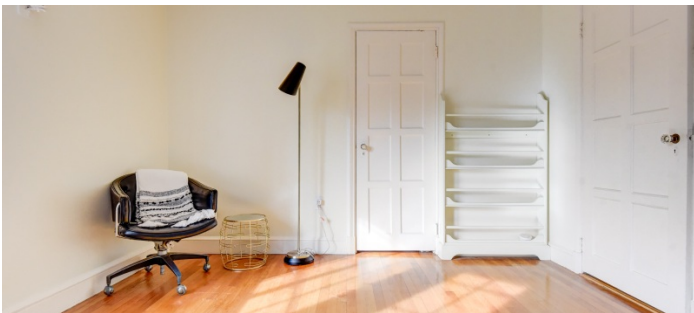
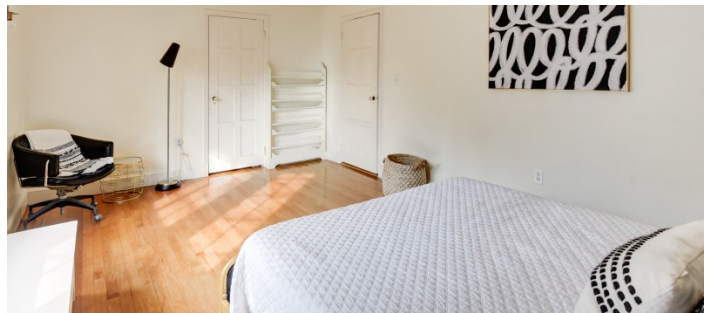
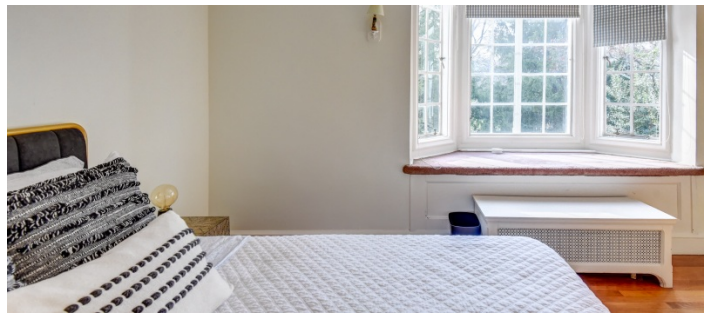
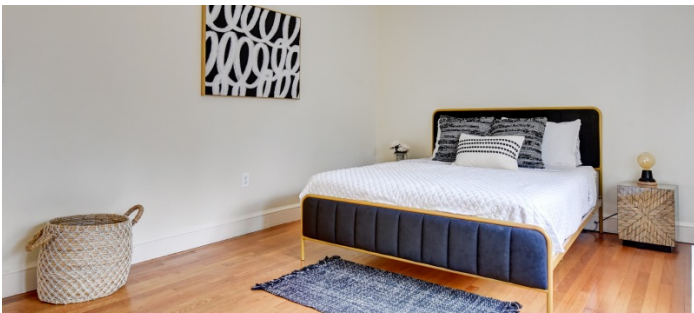














BASEMENT



