

LOCKER ROOM - VIEW FULL DETAILS BELOW

 LOCATION

Brooklyn, NY 11221

 SPECS

5,500 sq ft total

8', 9', 13.5' ceiling height

 TAGS

Basketball, Bathroom, Bedroom, Bohemian, Clawfoot Tub, Colorful, Concrete, Distressed Patina, Eclectic Quirky, Exposed Beam, Exposed Brick, Raw Industrial, Staircase, Terrace Patio, White Brick Wall

 CATEGORIES

\* In the Zone, Artist Studio / Gallery, Event Space, Gym Sport, Studio, Warehouse / Factory / Industrial

## Notes

Unique arts venue and production studio on lower level of historic church.

The Locker Room is comprised of 8 set-designed, surreal, slightly derelict rooms totaling 1,030 square feet. Most of the floors are concrete. The bathroom and shower room are tiled.

The Gymnasium is a 2,500 square foot raw industrial space with retro paint job, beautifully aged texture, wall of brick, old basketball hoops and tiled tin ceiling. The floor is original concrete, currently not finished. Measuring 50' long x 50' wide and 13.5' high, the space comes with adjacent 72 square foot ramp that makes for a cool side room. The space lets in very little daylight and is equipped with central heating and cooling system.

The Classroom is a set of 7 rooms totaling 1,880 square feet.

Money room may require additional fee for rental of prop money.

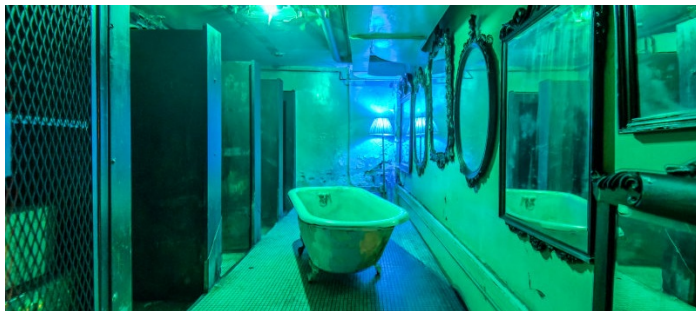
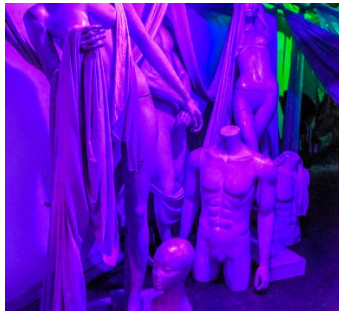
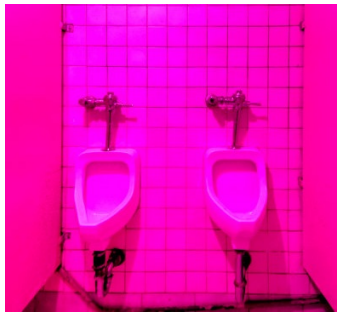
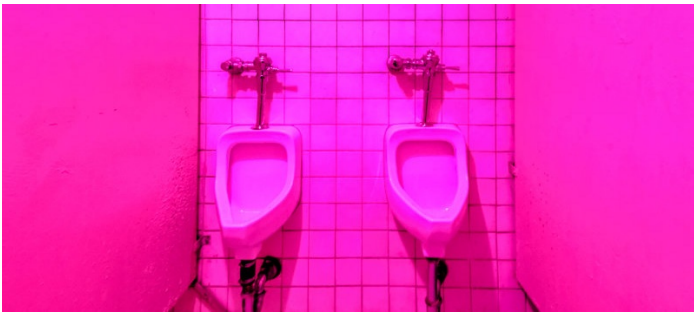
### Restrictions:

Moving artwork and furniture must be approved in advance (on case by case basis).

No nailing into walls. No painting of walls.

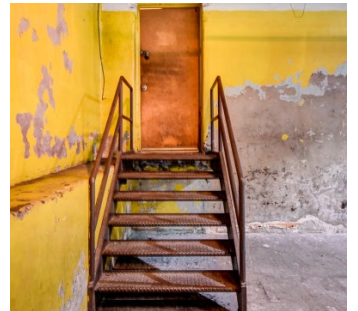
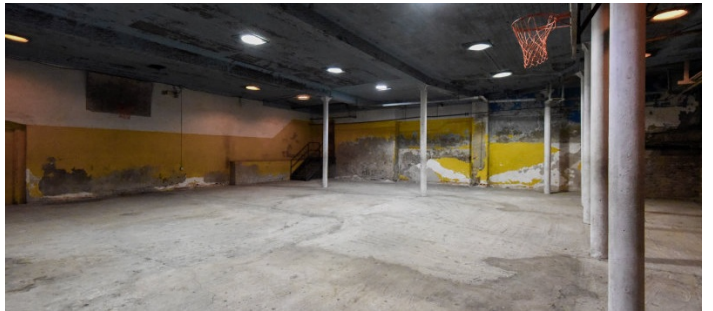
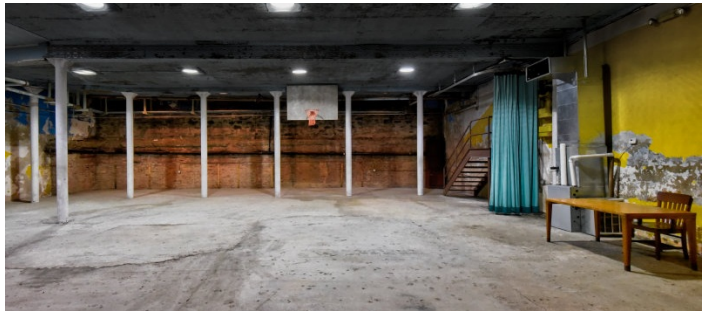
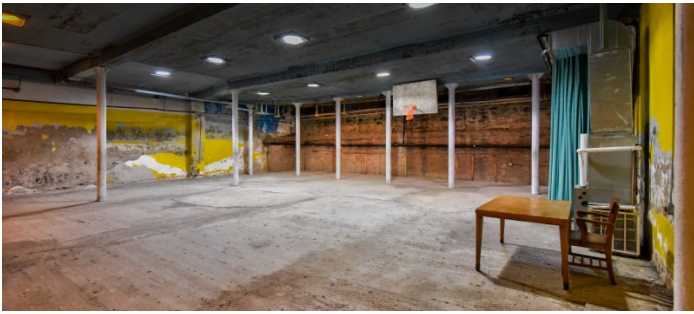
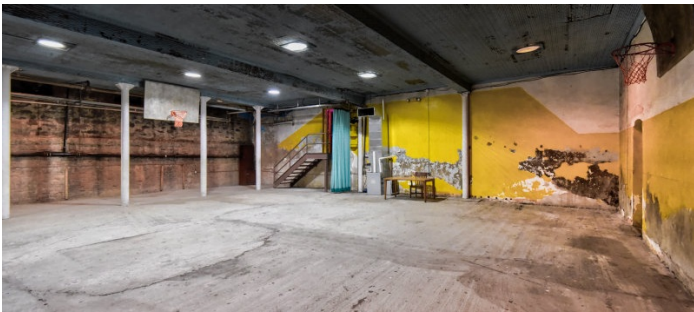
Church portion of building is off limits. No shooting on Sundays from 7am to 3:30pm.











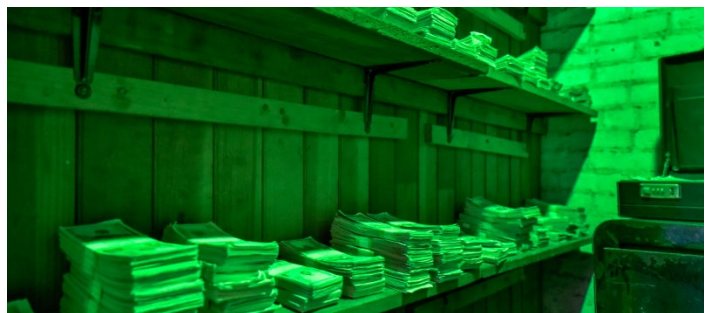
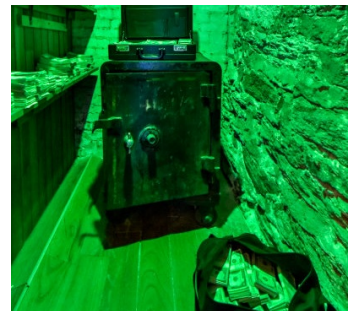
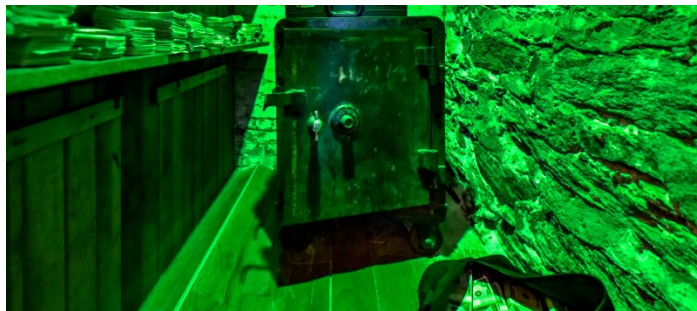
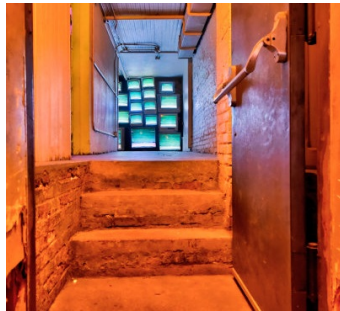
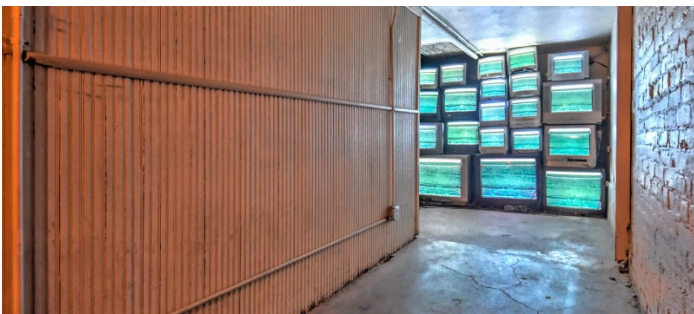


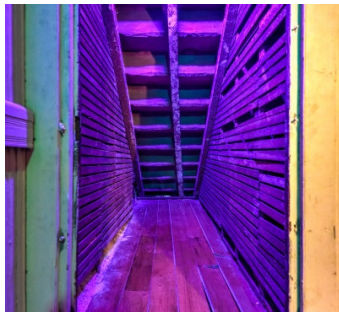
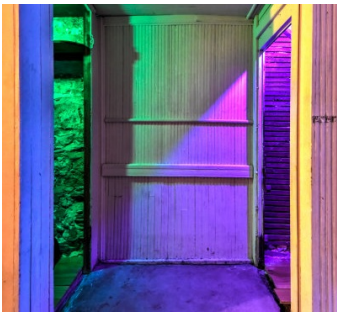




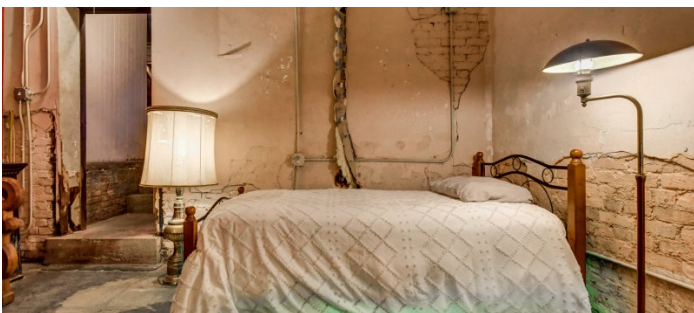












EXTERIOR

