

2040

Williamsburg, Brooklyn

LOCATION

Brooklyn, NY 11249

SPECS

3,200 sq ft

TAGS

Balcony, Bathroom, Bedroom, City View, Elevator, Fireplace, Floor to Ceiling Windows, Kitchen, Living Room, Modern Contemporary, Rooftop, Terrace Patio, Water Tower View, White Spaces, Wood Floor

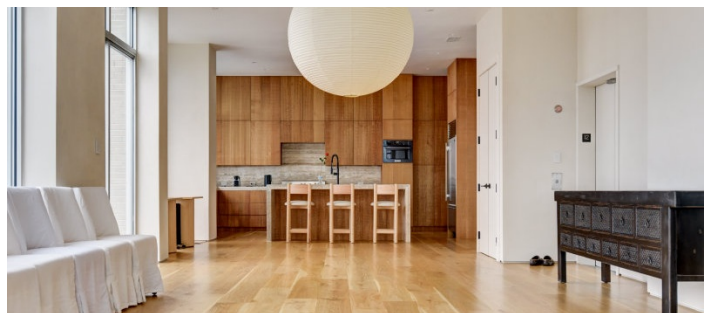
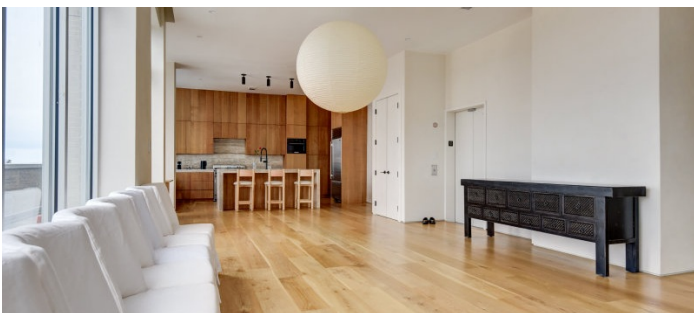
CATEGORIES

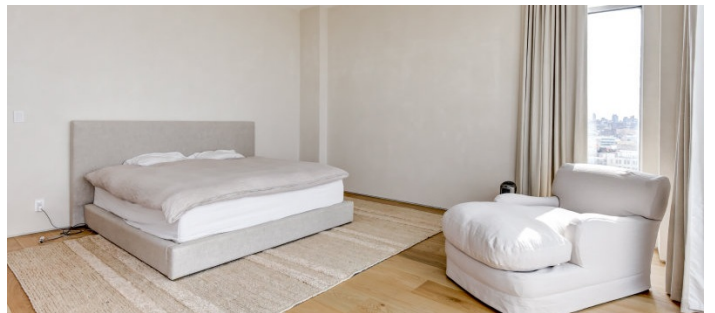
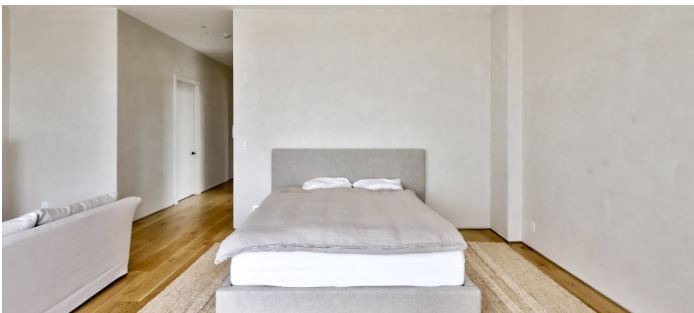
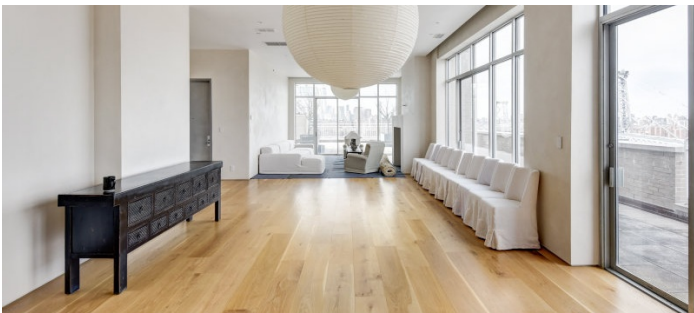
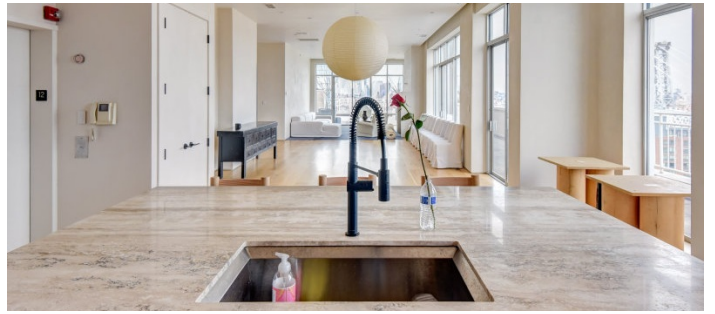
* In the Zone, Apartment, Loft, Penthouse

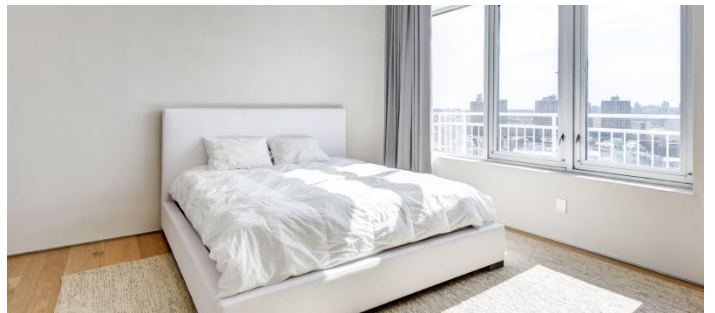
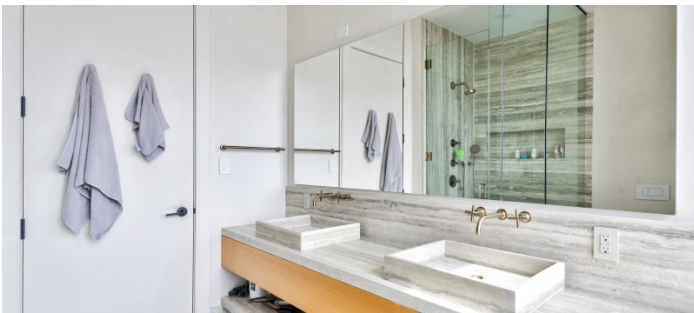
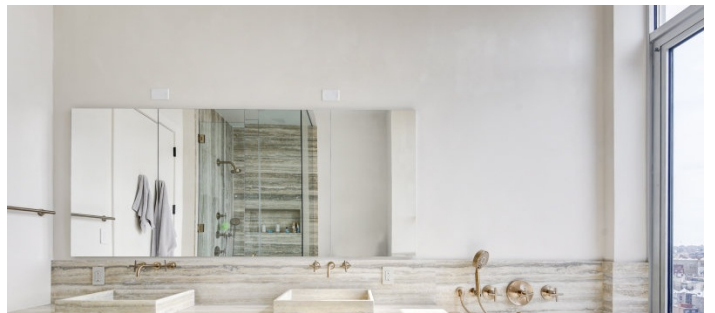
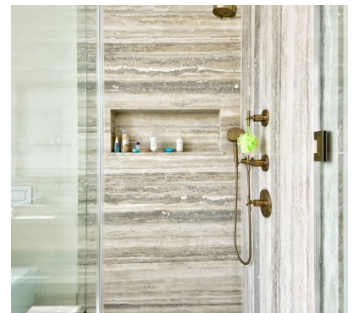
Notes

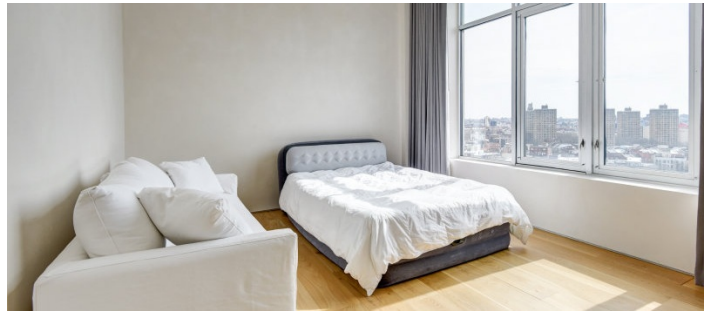
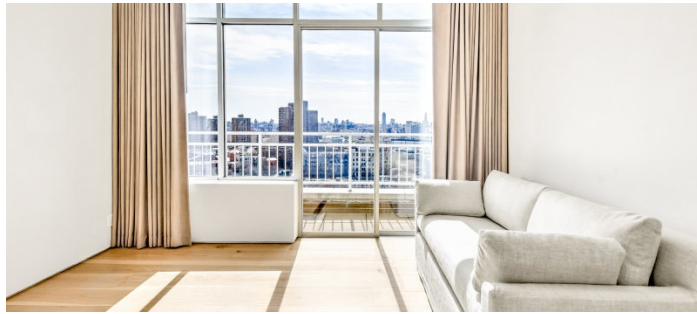
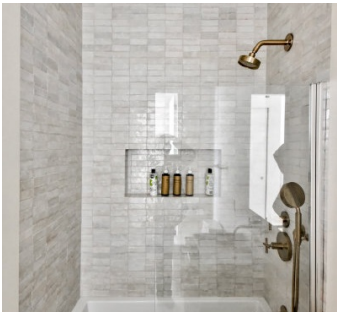
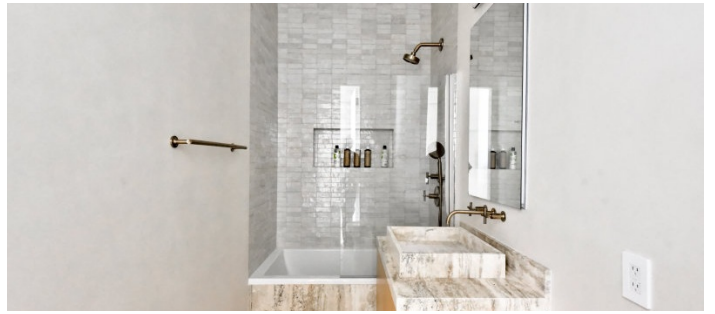
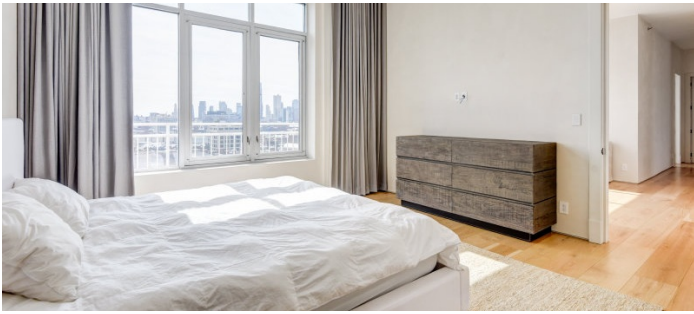
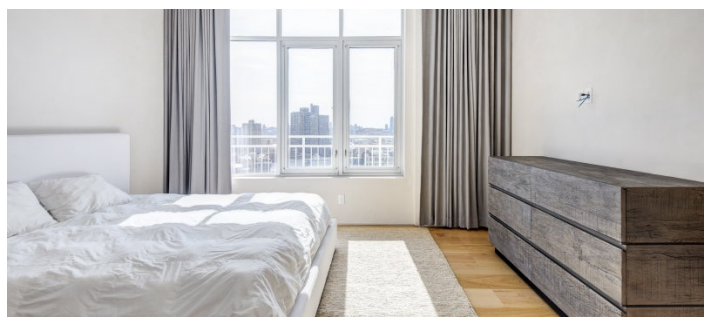
Magnificent full floor 3,200 square foot penthouse, accessed directly by keyed elevators, boasts a grand sun-filled, loft-like living room with dining room, chef's kitchen and glass walls and windows on three sides that lead to a 1,900 square foot wrap-around terrace with breathtaking views of Manhattan, Brooklyn, Queens and more.

Master Suite has a marbled windowed bathroom. The other two bedrooms, with south exposures and expansive Brooklyn views, feature en-suite full bathrooms.











ROOF TERRACE



