



 LOCATION
Rye, NY 10580

 DISTANCE FROM NYC
28 miles

 TAGS
Backyard Lawn, Balcony, Bathroom, Bedroom, Carpet, Clawfoot Tub, Colonial Federal, Colorful, Distressed Patina, Empty, Exposed Brick, Fireplace, Garage, Kitchen, Laundry Room, Living Room, Porch, Staircase, Staircase Ext, Stone Wall, Terrace Patio, Traditional, Wallpaper, White Brick Wall, Wood Floor

 SPECS
4,000 sq ft
10' ceiling height

 CATEGORIES
* In the Zone, House

Notes

Large, colonial house built in the 1800's with 4 levels including a large, unfinished basement and attached two car garage.

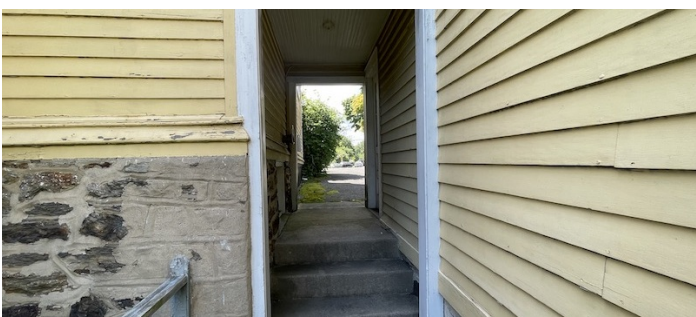
Restrictions:

Requests to paint or nail into walls must be approved in advance. Walls must be returned to original condition upon project completion.

No air conditioning.

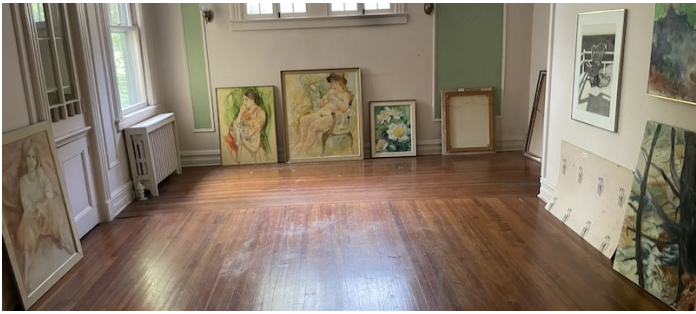




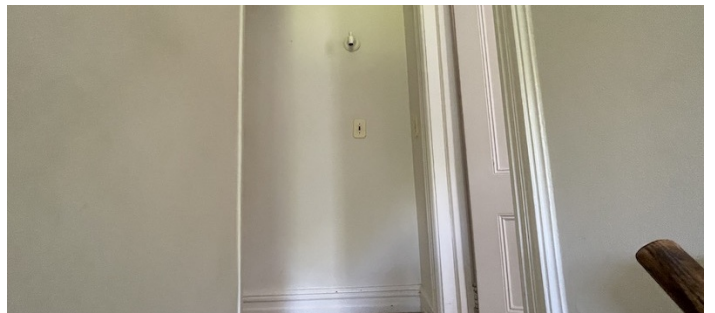
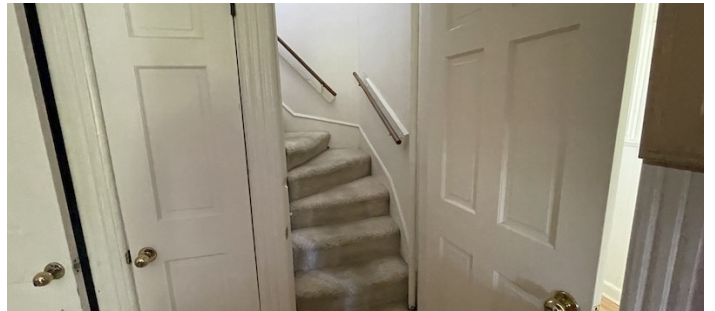


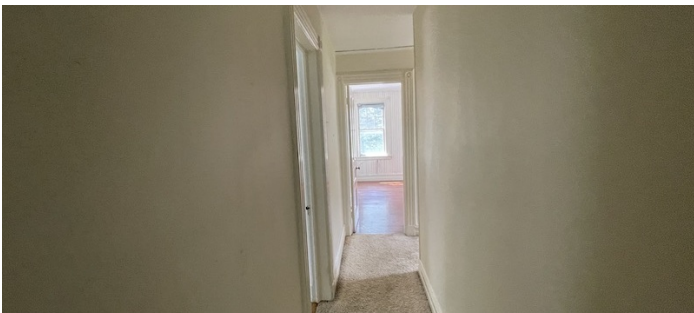
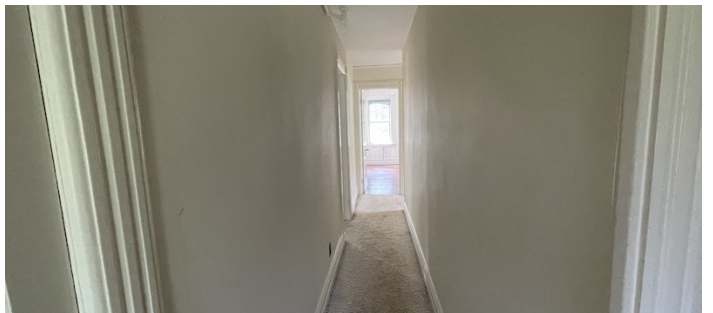
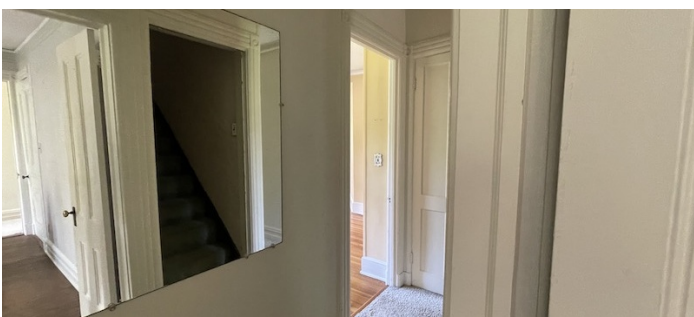


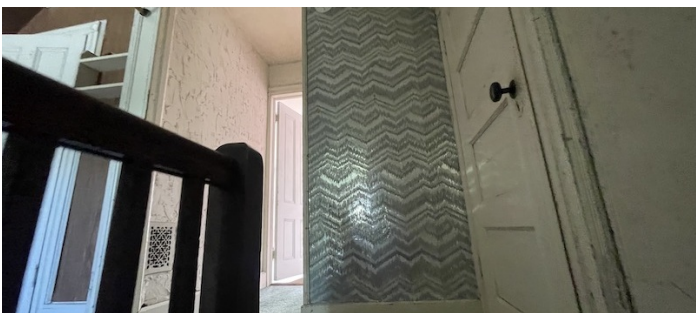
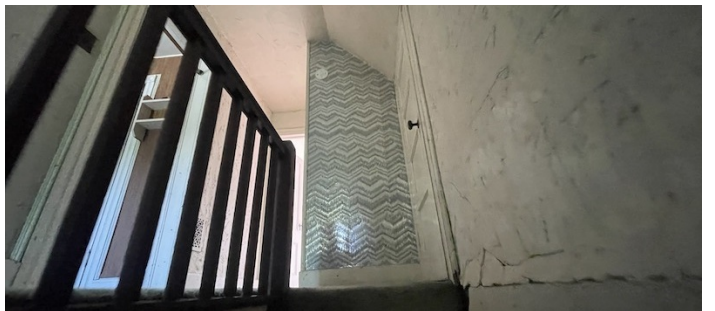
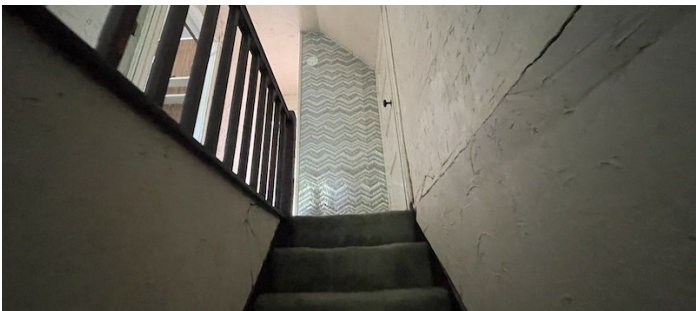
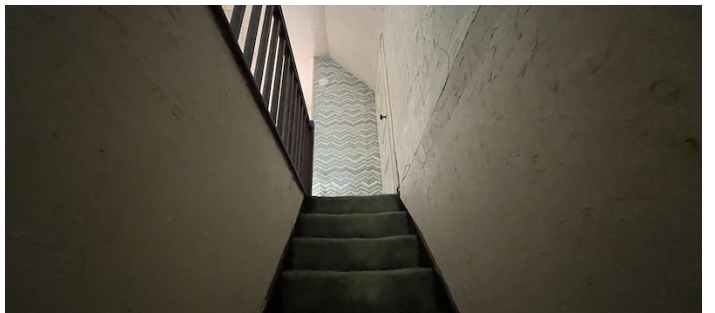
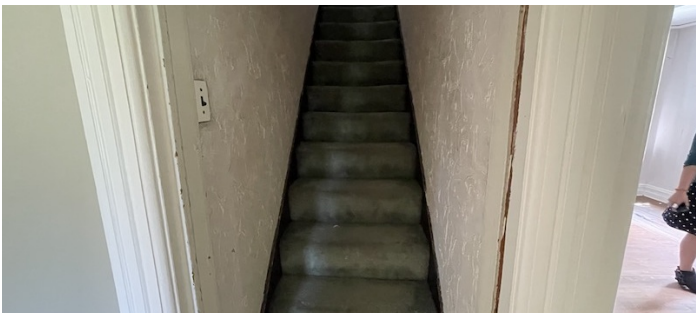


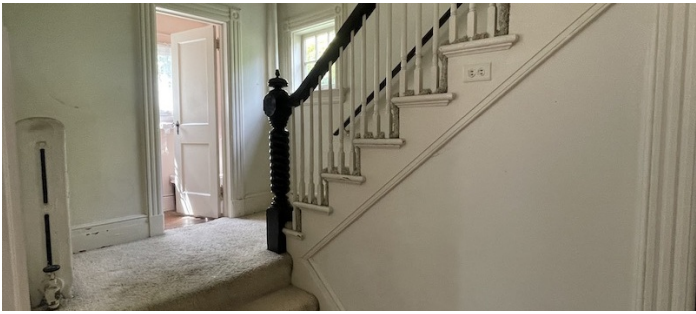




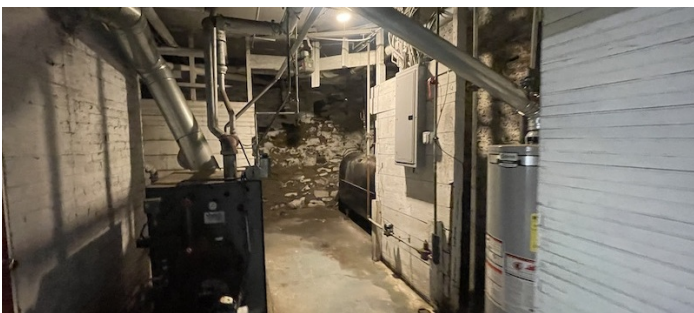
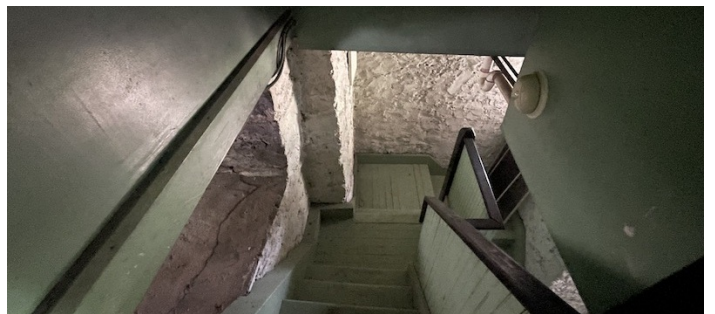
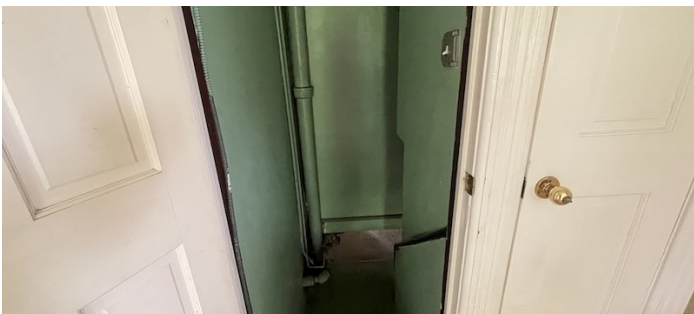


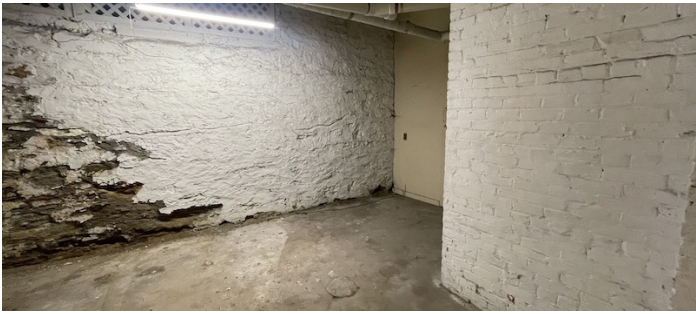














GARAGE

