

 LOCATION

New York, NY 10011

 SPECS

7,000 sq ft

 TAGS

Balcony, Bathroom, Bedroom, City View, Colorful, Eclectic Quirky, Elevator, Exposed Brick, Fireplace, Garden, Jacuzzi, Kids Room, Kitchen, Living Room, Modern Contemporary, Skylight, Staircase, Staircase Ext, Stoop, Terrace Patio, Walk-in Closet, Wallpaper, Wood Floor

 CATEGORIES

* In the Zone, Apartment, Brownstone, Townhouse

Notes

Gorgeous Chelsea townhouse built in 1850 and gut renovated in 2021. The property is more than 7,000 sq ft spanning 6 stories with a backyard, 2 terraces and an accessible roof. The interior space includes 2 living rooms, a chef's kitchen and a dining room, 3 bedrooms, 2 offices, 1 playroom, 7 bathrooms, and a finished cellar,

There is a bright oculus formed by 5 flights of stairs stretching from the 1st floor to the 5th floor skylight. Large fireplace that can run as a gas or wood-burning. Exposed brick on every floor of the home, most of it retained from the original structure. Chef's kitchen with a long quartzite island, a peninsula, brass finishes, navy blue millwork and reclaimed wood shelving.

Primary bedroom with lavender walls, lavender velvet curtains, brass finishes and antique french side tables. Primary bathroom (18 feet long) with a mosaic floor, brass and wood finishings and a separate W.C. Laundry Room with washer, dryer, sink, counter space, cabinets and shelves. Guest bedroom with elegant floral wallpaper, and cream linen curtains. Children's bedroom with a dark blue wallpaper, rug and shades with a white bunkbed. Children's play & reading nook, decorated with blue chinoiserie wallpaper.

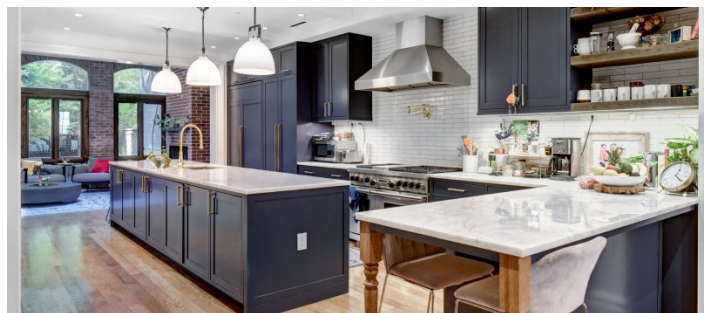
Finished cellar, 825 sf elevator that runs from the garden level to the 5th floor, decorated with rainforest-themed wallpaper. Kitchenette on the 5th floor has deep red millwork, brass finishes and a gold and marble tile backsplash.

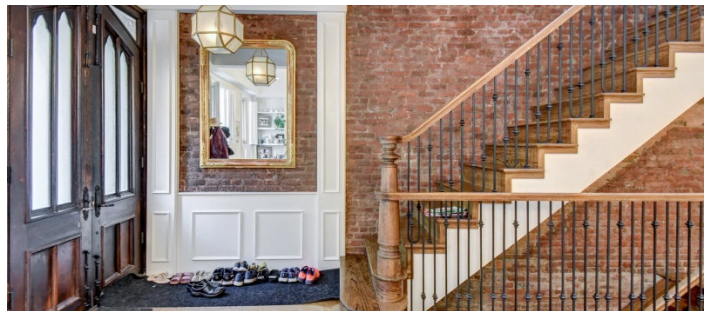
Ivy-covered stoop with stunning old church doors from the mid-1800's. Small front garden area with plants and a pear tree. Backyard with lighting, a pergola, blue stones, turf and brick-enclosed flower beds. 3rd floor terrace (326 sq ft) surrounded by plants and covered by a pergola. Hot tub on 5th floor terrace (177 sq ft), covered by a pergola and ivy. Rooftop (607 sq ft) with vast views of Chelsea, New Jersey and midtown west.

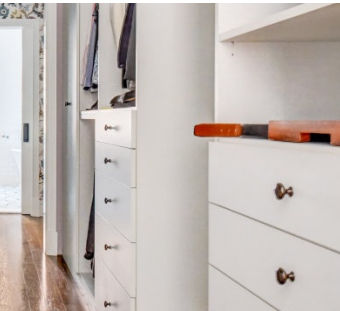
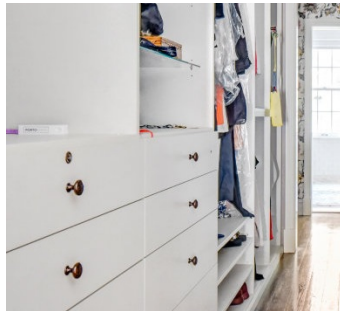
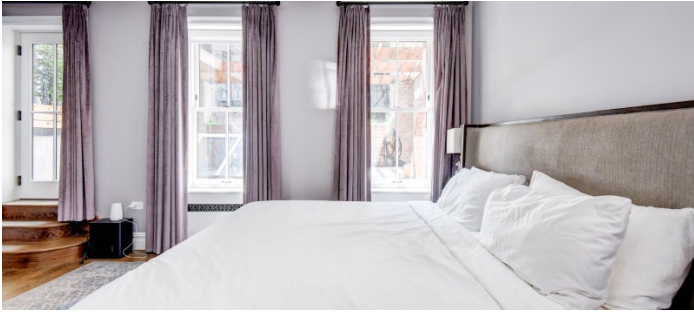
Restrictions:

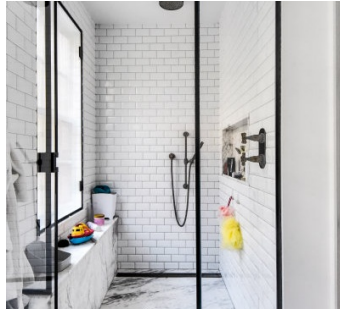
Floor protection requested; please bring shoe covers.

Requests to nail into walls or paint walls must be approved in advance.

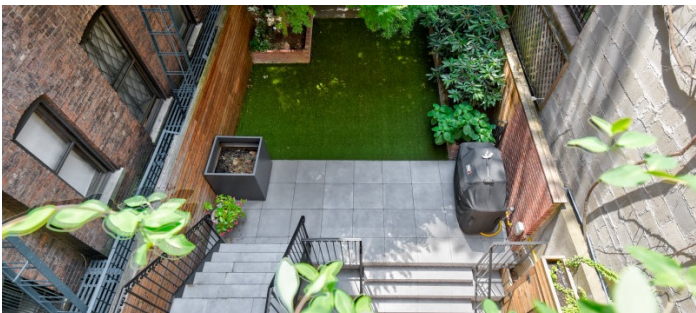
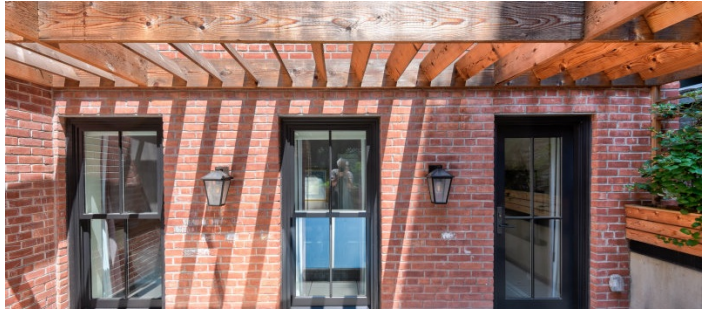
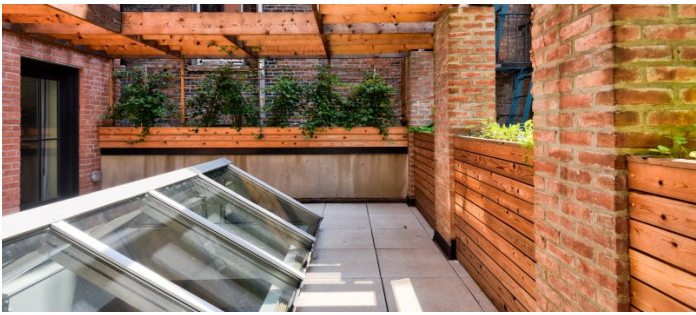


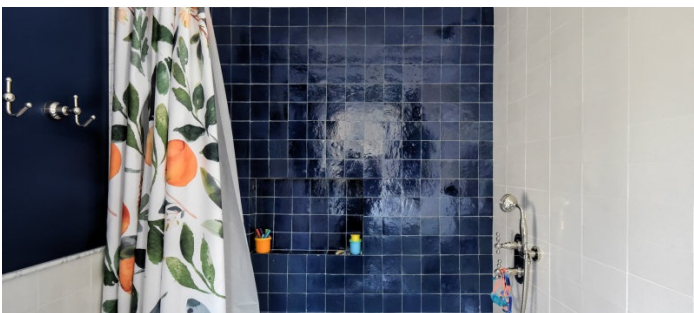
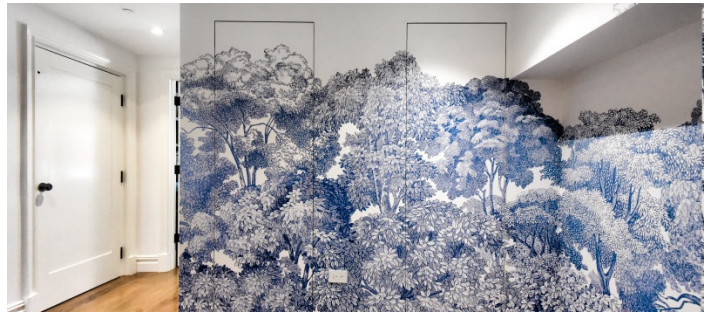
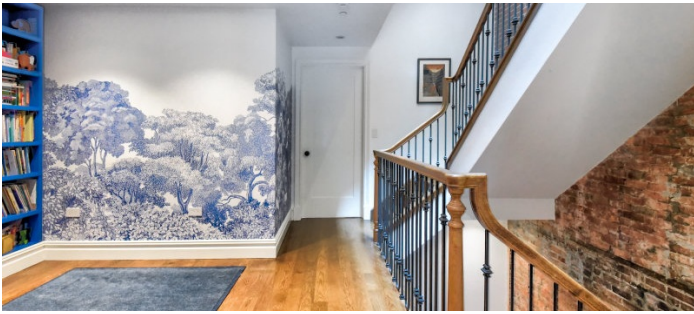


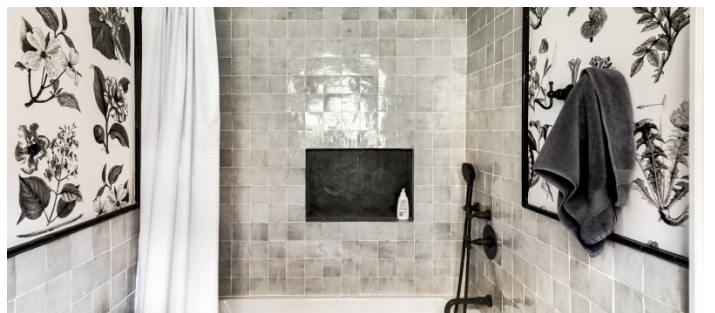
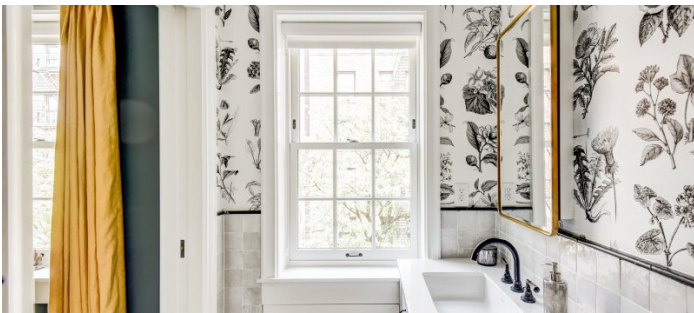
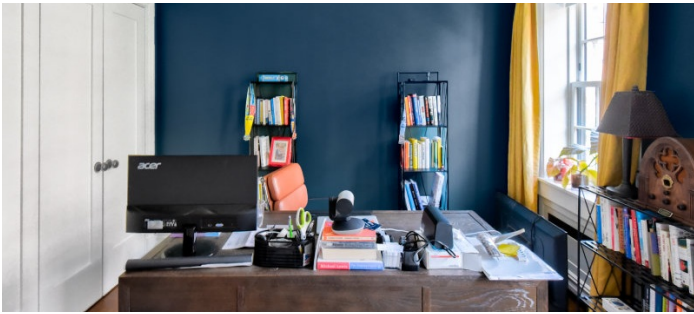


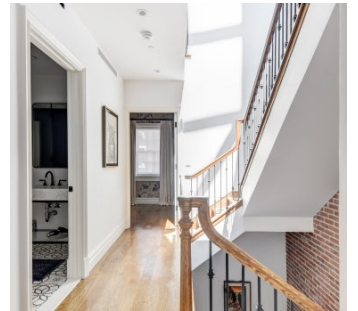
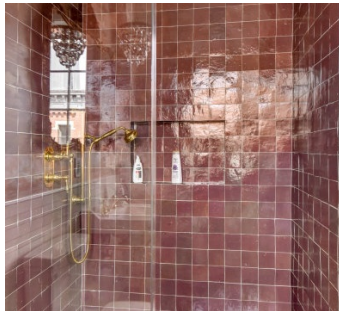
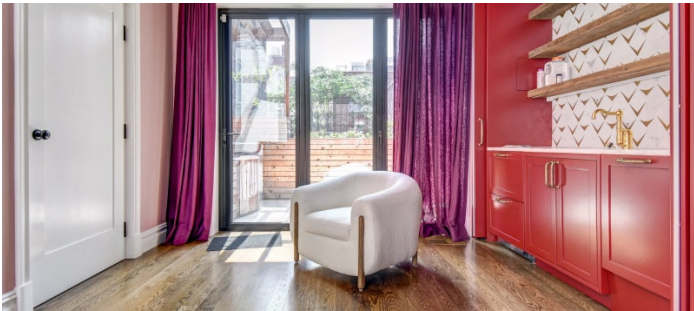
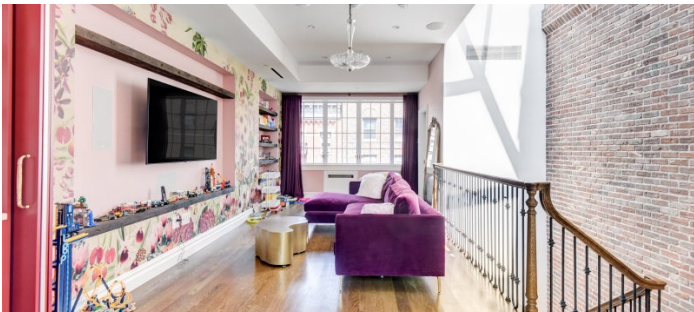


3RD FLOOR TERRACE



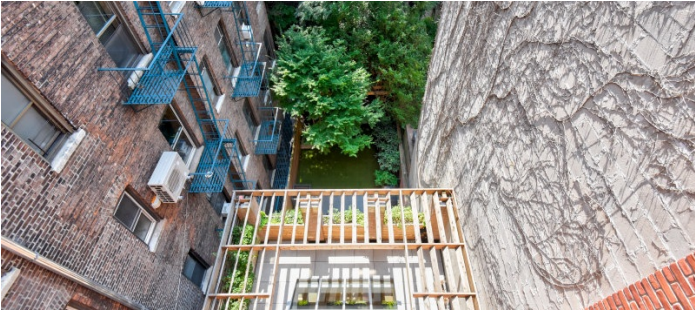
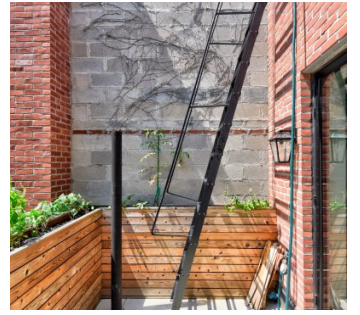
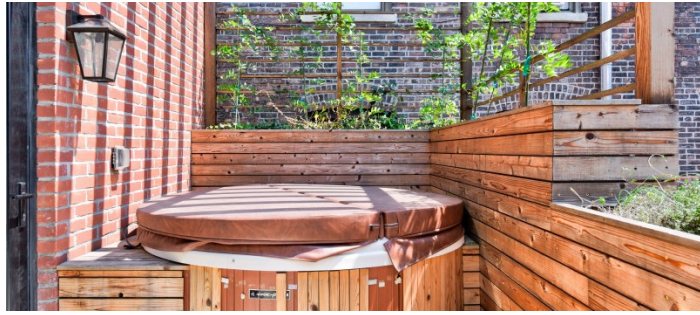


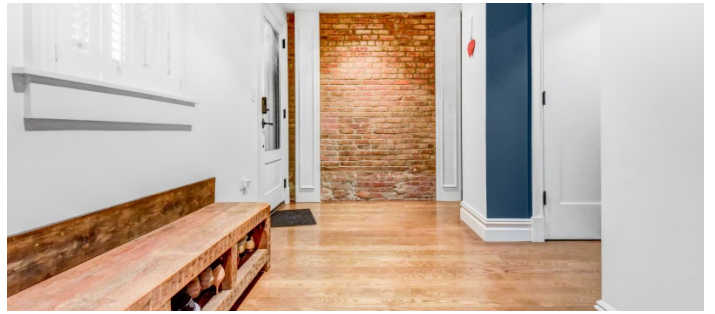
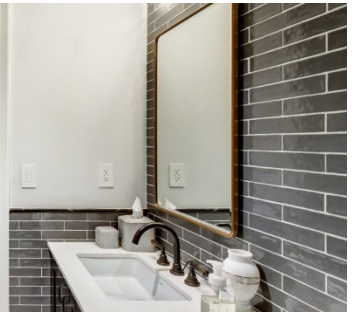
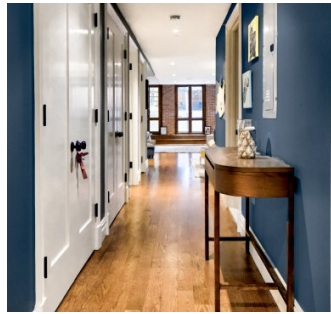




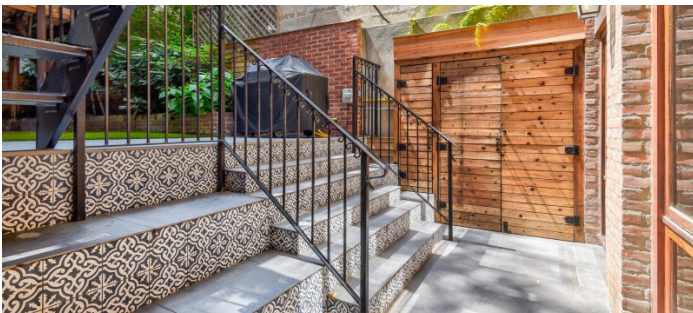
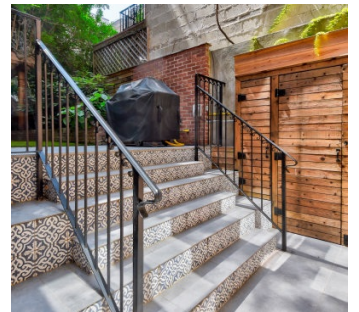


5TH FLOOR BALANCY WITH HOT TUB









EXTERIOR

