

5079

Montclair, NJ

📍 LOCATION

Montclair, NJ 70742

📏 DISTANCE FROM NYC

17 miles

🏷️ TAGS

Backyard Lawn, Bedroom, Colonial Federal, Exposed Beam, Exposed Brick, Garage, Kids Room, Kitchen, Living Room, Porch, Staircase, Staircase Ext, Stoop, Suburban, Sun Room, Terrace Patio, Traditional, White Brick Wall, White Spaces, Wood Floor

📐 SPECS

2,689 sq ft

8'-9' ceiling height

🏠 CATEGORIES

* In the Zone, House

Notes

Beautiful 1928 Side Hall Colonial is located on one of Montclair's most favorite streets. The lush backyard has a paver patio and a 2-car garage, and the house is set back far from the street resulting in a large front yard.

Home offers beautiful period details but is updated for contemporary living with 6 bedrooms and 3.5 bathrooms. Both the 1st and 2nd floors have brand new white oak flooring.

This sun-drenched home has an expansive first floor plan featuring a living room with wood burning fireplace, sun room with built-ins and access to a small, private porch, formal dining room with access to private screened porch, and an updated kitchen with granite counters, abundant cabinetry, breakfast nook, and stainless appliances. A discreet powder completes this level.

The 2nd floor has four bedrooms including a primary with a new bathroom featuring a large shower and gorgeous custom tile. The hall bath is updated and has a jetted tub. 3rd floor has a one bedroom, one small bedroom/office, full bath, and attic storage space.

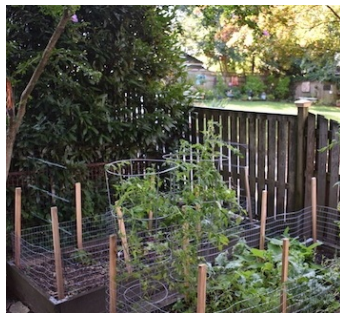
The basement has a music studio, recreation space, laundry, and tons of storage.

Restrictions:

Prefer no shoes inside; please bring shoe covers.

No nailing into walls. Requests to paint walls must be approved in advance and walls returned to original condition.

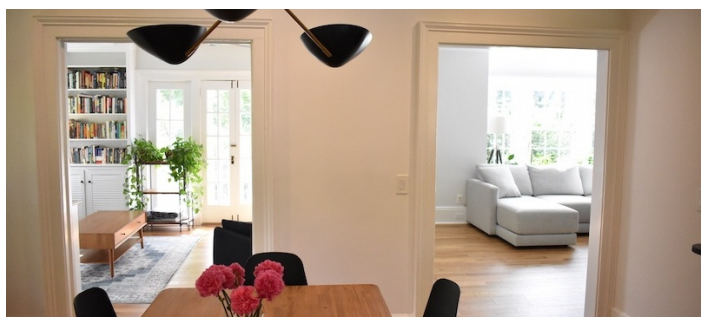
Production activity is allowed from 7am to 9pm.

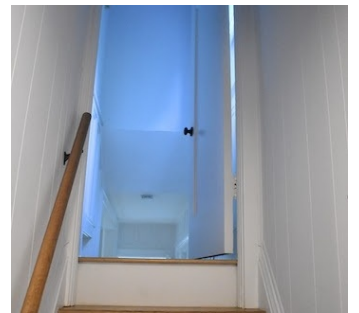
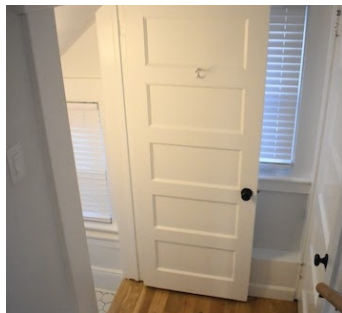
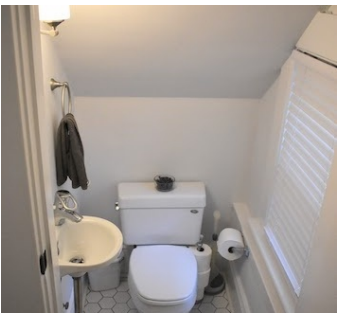
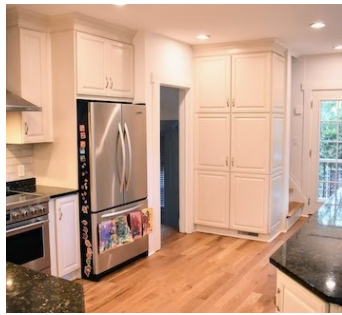


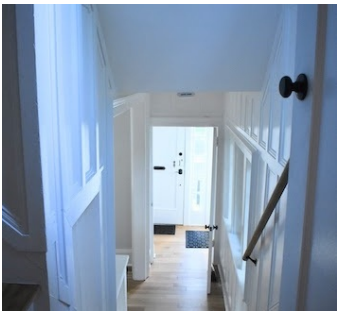


1ST FLOOR

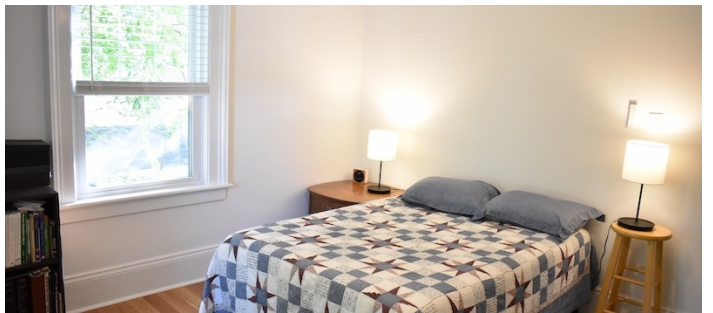
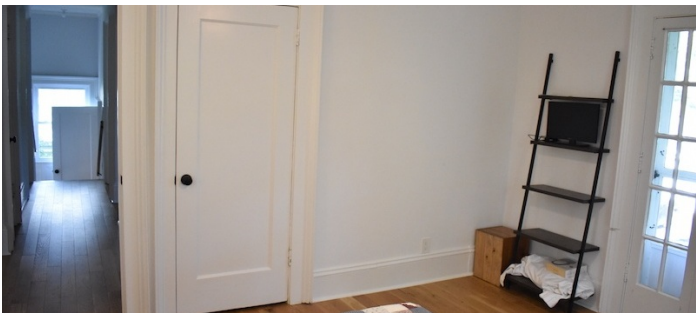
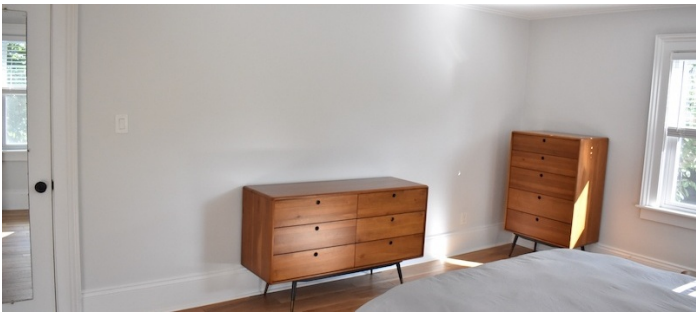


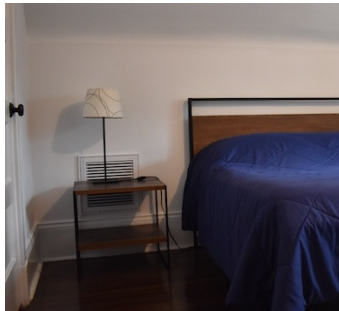
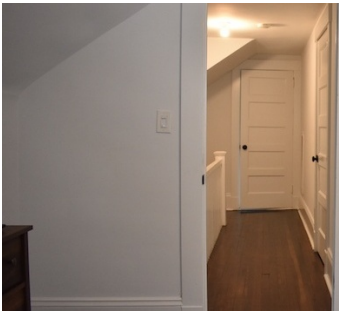
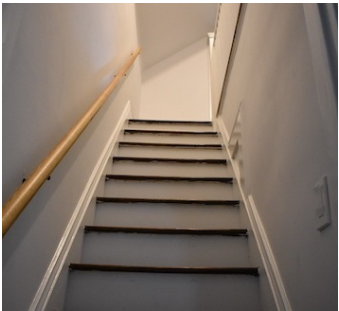
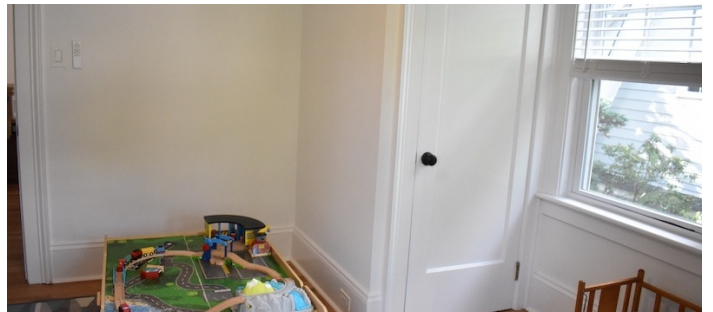
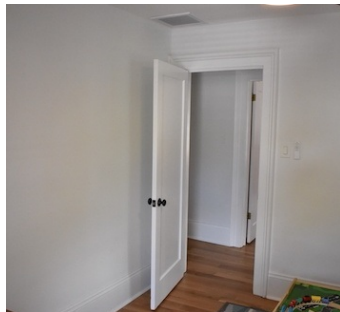
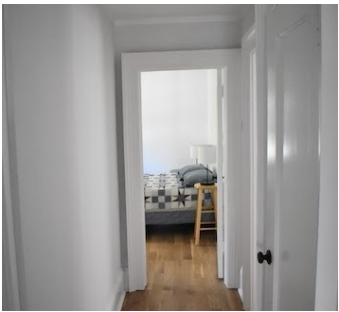


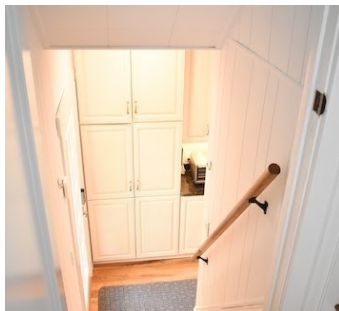
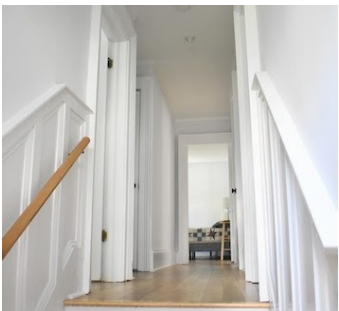
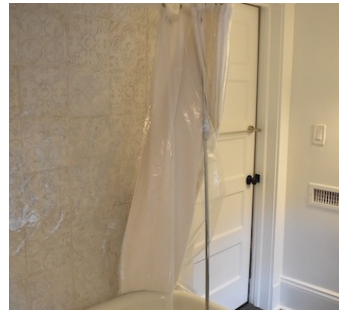




2ND AND 3RD FLOOR







BASEMENT

