



LOCATION

Greenwich, CT 06831



DISTANCE FROM NYC

36 miles



TAGS

Balcony, Bar, Bathroom, Bedroom, Carpet, Classic Grand, Colonial Federal, Elevator, Fireplace, Jacuzzi, Kitchen, Living Room, Masculine, Piano, Pool Outdoor, Porch, Skylight, Staircase, Stone Wall, Sun Room, Terrace Patio, Traditional, Wallpaper, Wood Floor



SPECS

15,000 sq ft
10' to 14' ceiling height
5 acres



POWER

400 amps



CATEGORIES

* In the Zone, House, Mansion

Notes

12,000 square foot mansion in Greenwich, CT featuring one-of-a-kind Batcave.

The Batcave is approximately 25 feet underground, the space is adorned with four gothic fireplaces and antique chandeliers, creating a mesmerizing "Hall of Mirrors." Accessible through a series of secret doors and passages, including a room that magically disappears on hidden tracks with the flip of a switch. An extraordinary painting (conceals yet another hidden door) of a 1920s speakeasy Flapper named Noreen Guiran adds to the allure. At the end of a 100-foot tunnel, awaits a colossal bank vault door from 1875, weighing a staggering 12,000 pounds.

Above all, it serves as an exceptional motorcycle museum, showcasing nearly 100 vintage Harley Davidsons spanning from 1910 to 1970, including exceptionally rare pre-war and mid-war machines.

Adjacent to the museum, you'll find a meticulously crafted 1920s Speakeasy. Its magnificent oak bar, constructed in 1885, stands proudly alongside a fully operational mahogany Phone Booth from the 1920s. A grand fireplace and entry doors from 1800s Romania transport visitors back in time.

Concealed behind the bar's kitchen lies yet another secret door, leading to a private tasting room constructed entirely of antique brick and 100-year old wooden planks, evoking the feel of a small tavern in 1910 Ireland. It is a Speakeasy within a Speakeasy.

The BatCave also features a stone grotto, inviting guests to sink into plush club chairs and leather couches beneath a breathtaking antique chandelier. An exquisite 18th-century fireplace adds to the ambiance.

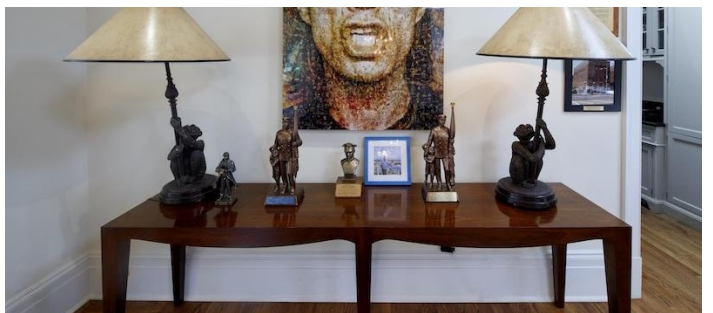
The James Bond Lounge awaits—a sleek, mahogany-clad den concealed behind a massive circular bank vault door. Inside, an array of surprises await: sliding shelves that discreetly hold various handguns; a concealed bulletproof viewing area for the indoor range disguised as a vanishing television; and a library wall that cunningly conceals the entrance to a world-class indoor shooting range.

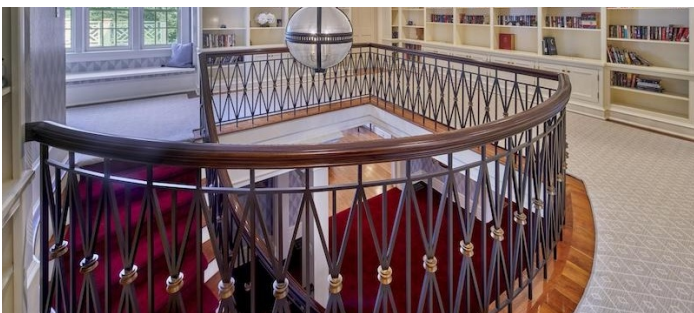
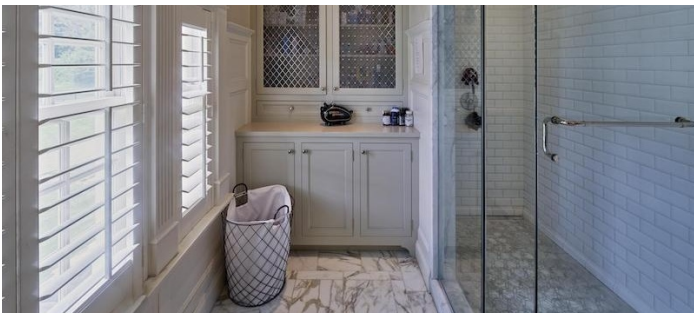
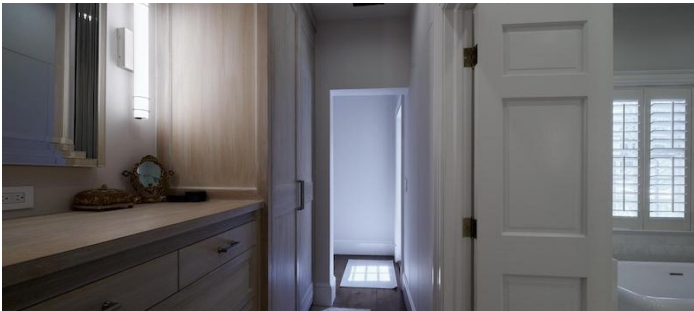
Photos courtesy of Spencer Lasky.

Restrictions:

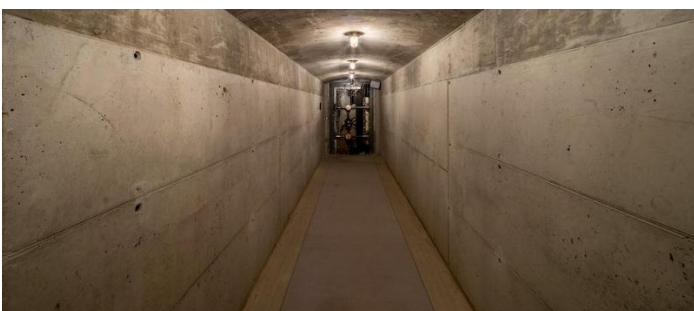
No painting of walls. No nailing into walls.

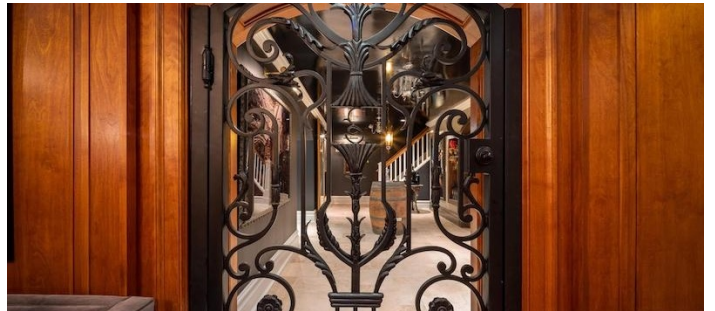


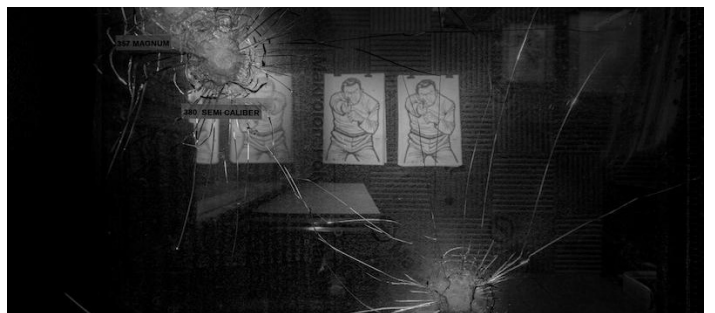
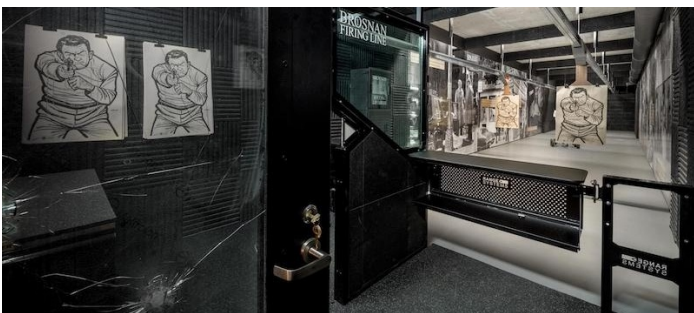
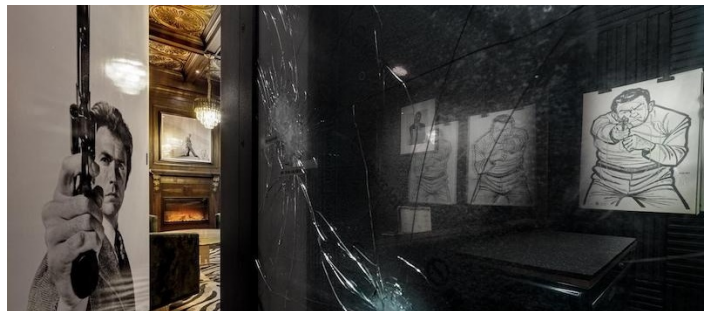
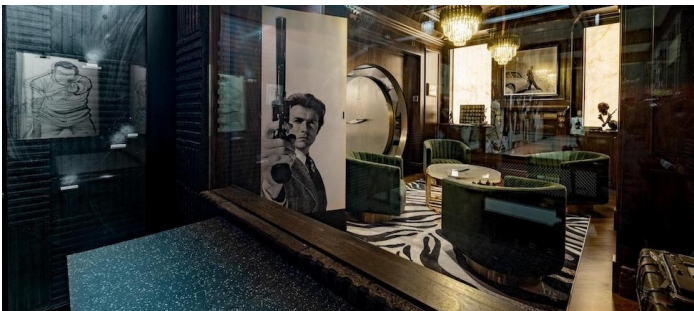
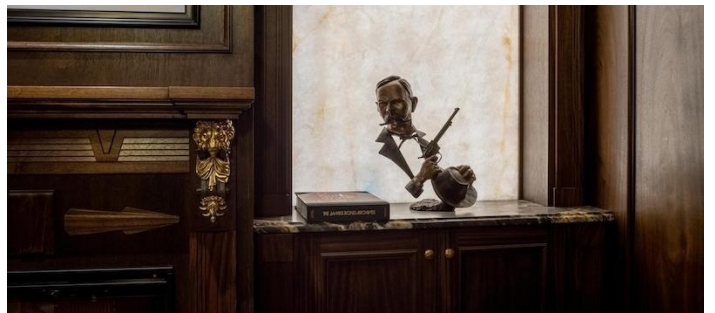


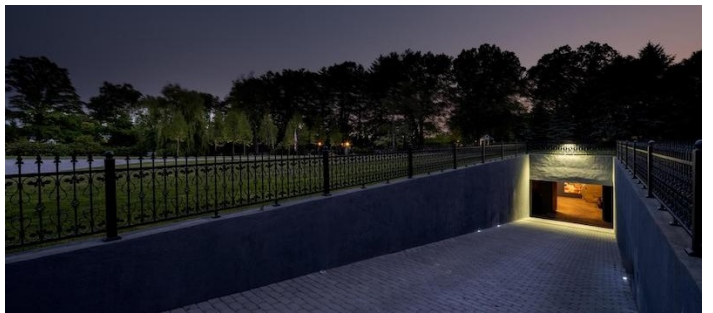
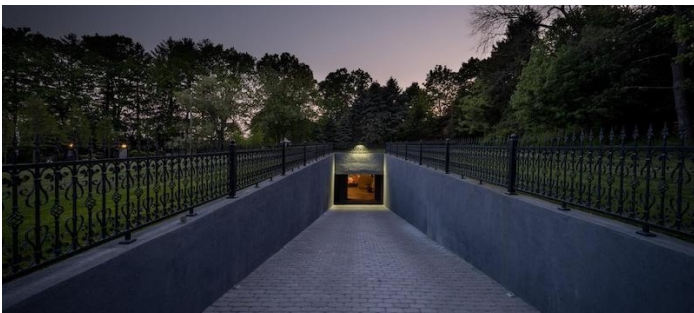










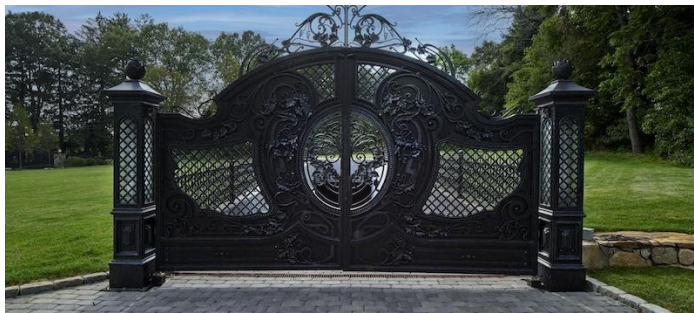






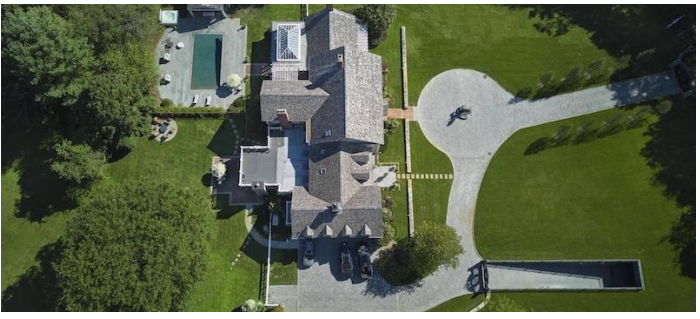


EXTERIOR





AERIAL



FLOORPLAN

