

 LOCATION

London, UK N1 5QG

 TAGS

Bathroom, Bedroom, Eclectic Quirky, Exposed Beam, Kitchen, Living Room, Modern Contemporary, White Brick Wall, Wood Floor

 SPECS

1,000 sq ft
10' ceiling height

 POWER

240

 CATEGORIES

Apartment, Loft

Notes

This stylish open-plan flat includes a large kitchen and living space with large windows, and a single bedroom, one full bathroom, and one additional toilet. It is furnished in a modern style, and the professional kitchen is extensively equipped.

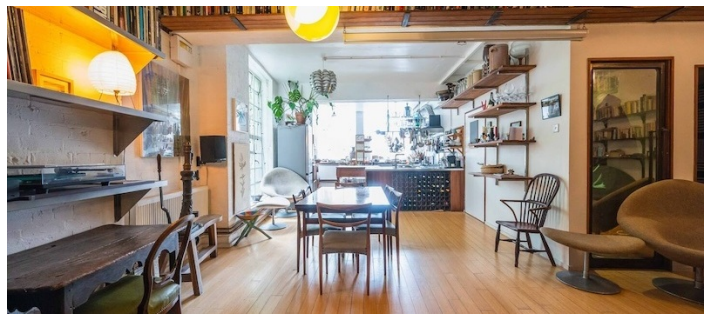
It is between ground level and first floor, with a half-flight of stairs from the streetside loading area into front door.

Restrictions:

Requests to paint or nail into walls must be approved in advance; walls must be returned to original condition.

Locked office space is off-limits.

Prefer no more than 20 people inside; please bring shoe covers.







FLOORPLAN

