

2138

# Tribeca, Manhattan

 LOCATION

New York, NY 10007

 SPECS

3,622 sq ft

14' ceiling height

 TAGS

Bathroom, Empty, Exposed Brick, Kitchen, Living Room, Modern Contemporary, Staircase, White Spaces, Wood Floor

 CATEGORIES

\* In the Zone, Apartment, Loft, Townhouse

## Notes

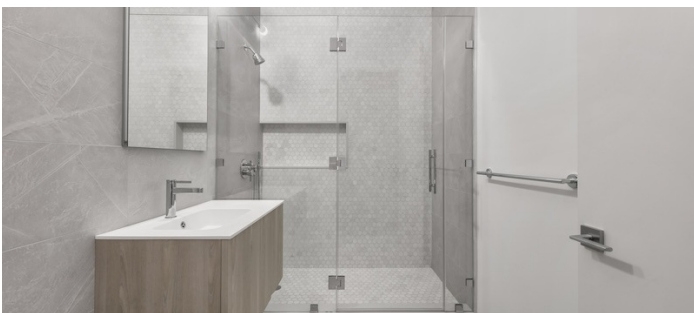
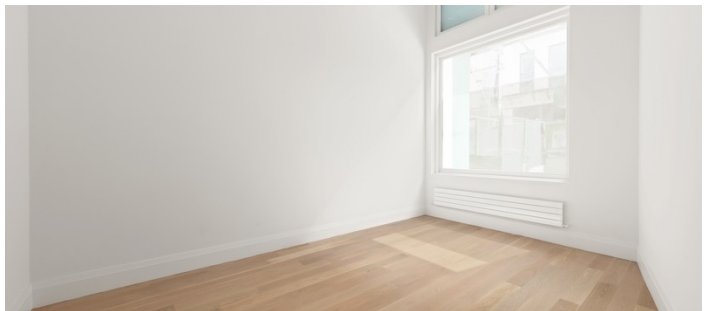
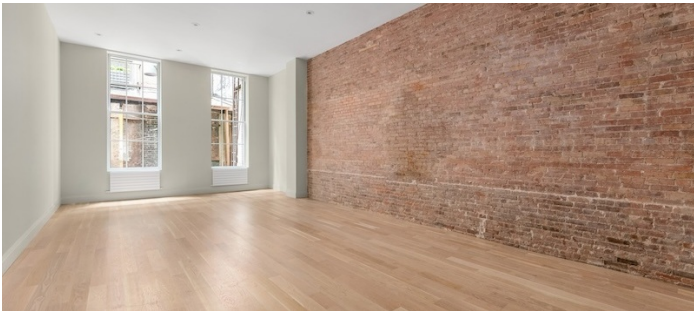
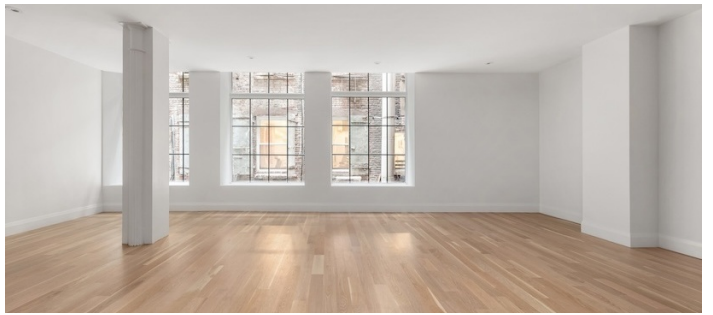
Exquisite duplex townhouse nestled within a historic landmark building in the vibrant South Tribeca Historic District.

Nearly floor-to-ceiling windows illuminate the space with natural light, elegantly accentuating exposed brick detailing and original columns.

Currently empty.

### **Restrictions:**

Requests to paint or nail into walls must be approved in advance; walls must be returned to original condition.





FLOOR PLAN

