

 LOCATION

Litchfield, CT 06759

 DISTANCE FROM NYC

96 miles

 TAGS

Backyard Lawn, Barn, Basketball, Bathroom, Bedroom, Colonial Federal, Colorful, Exposed Beam, Fireplace, Garage, Kids Room, Kitchen, Living Room, Modern Contemporary, Rustic, Skylight, Staircase, Stone Wall, Terrace Patio, Traditional, White Spaces, Wood Floor

 SPECS

5,200 sq ft

1.4 acres

 POWER

400/fuse box in basement

 CATEGORIES

Barns, House

Notes

1863 Victorian white shingled house with dark green shutters. The house benefits from high ceilings and spacious rooms, including several large open archways between rooms on the ground floor. There is a wood-paneled living room that was added on in the 1920s with wood-burning fireplace.

The interiors span three floors of finished space, including the 3rd floor attic which has been converted into an open plan play/bunk area. Separate from those three floors, there is a basement that is unfinished.

The house features a front yard, back patio, and backyard with classic old Americana barn. There is also a two-car garage.

Restrictions:

Crew limit not to exceed 50 people.

Prefer no shoes inside; please protect floor and provide shoe covers.

No painting or nailing into walls.

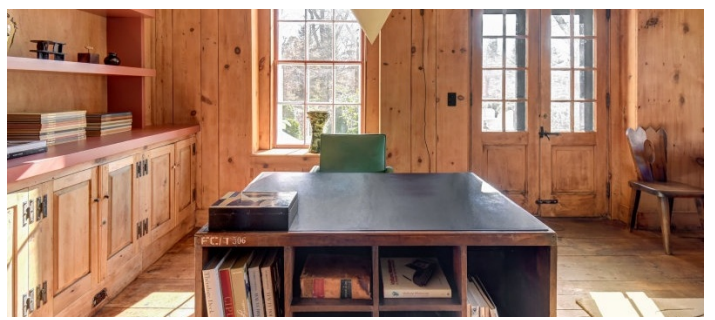
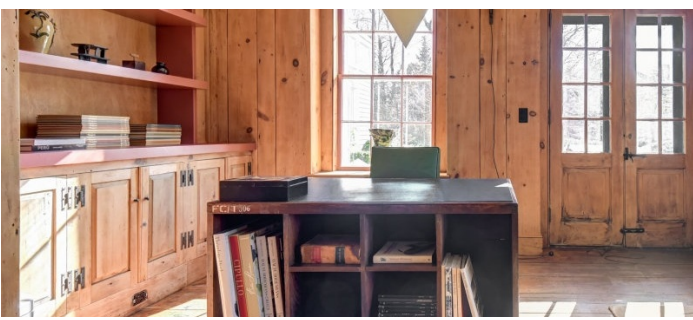
Requests to use specific furniture should be approved in advance.



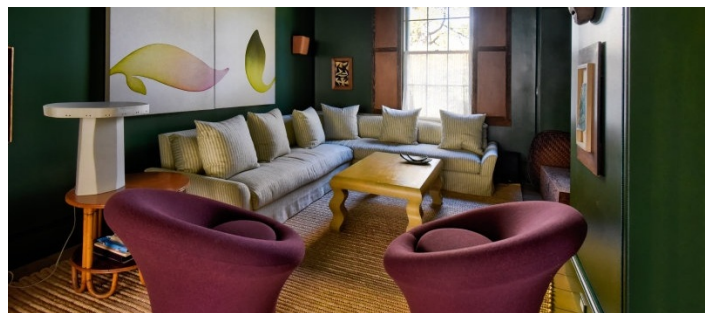
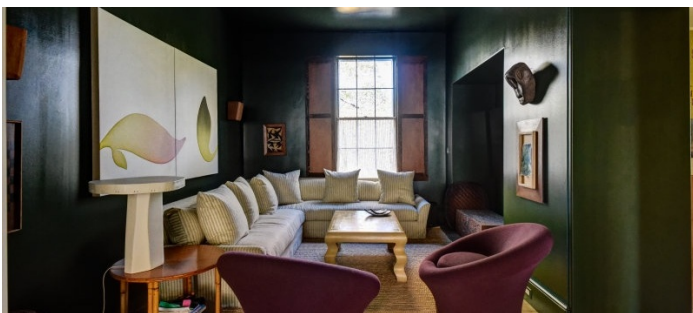


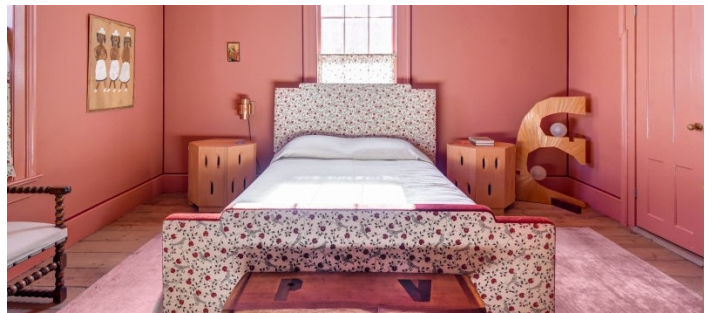
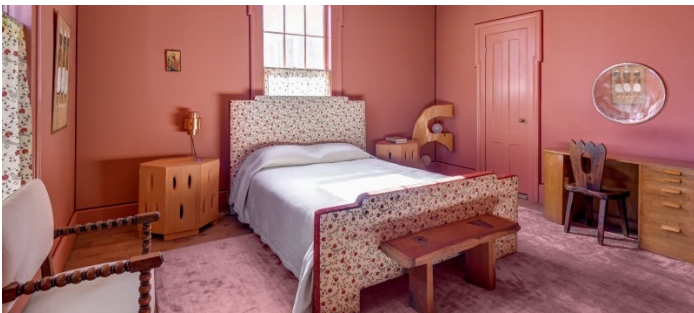
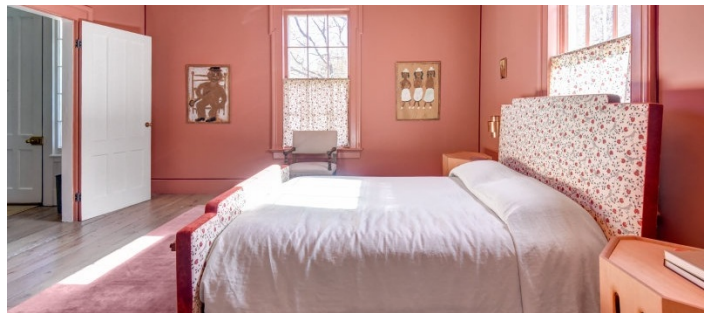
1ST FLOOR

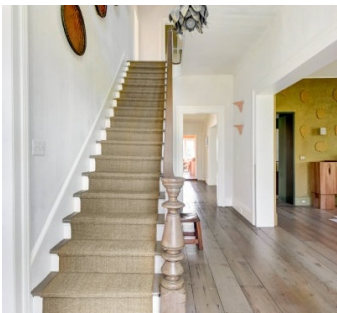
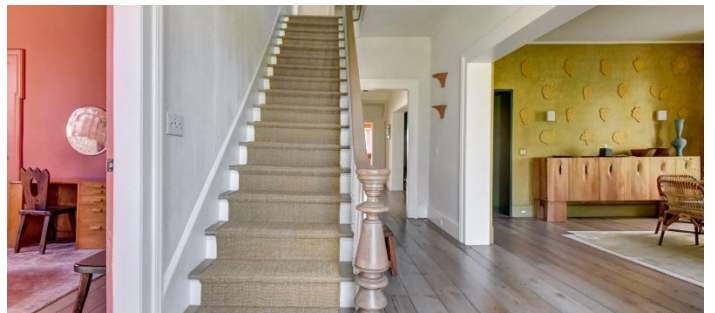
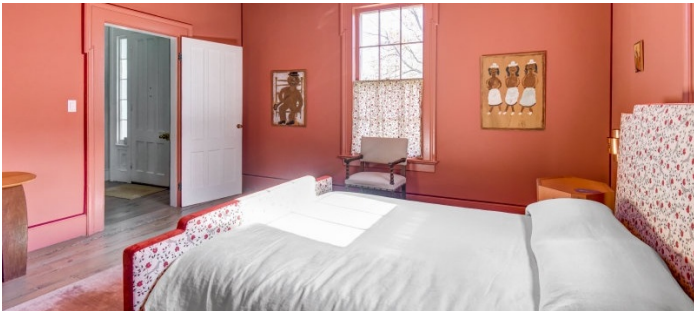
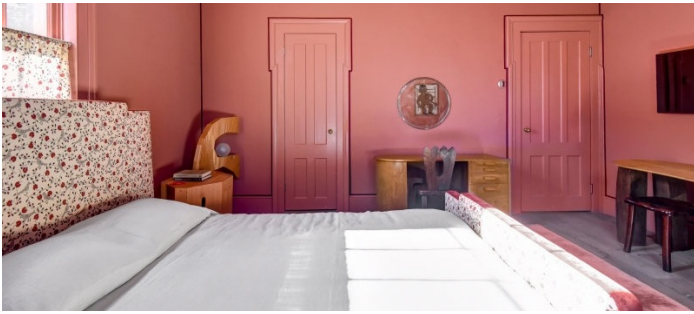
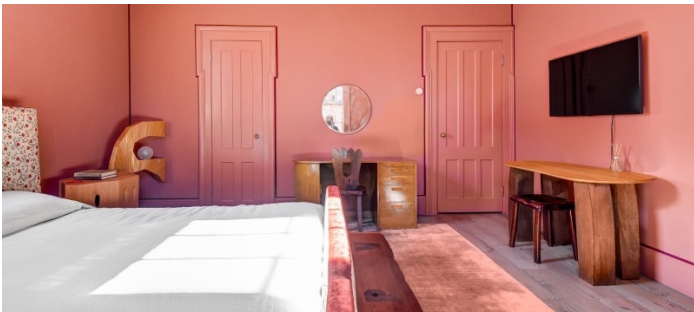












2ND FLOOR

