

5090

Sandwich, MA

LOCATION

Sandwich, MA 02563

DISTANCE FROM NYC

238 miles

TAGS

Backyard Lawn, Bedroom, Colonial Federal, Exposed Beam, Fence, Fireplace, Garden, Historic, Kitchen, Lake or Pond, Living Room, Shingle, Traditional, Wood Floor

SPECS

1,800 sq ft

6'8"-8' ceiling height

.24 acres

CATEGORIES

Cottage, House

Notes

3/4 Cape built in 1639 on Cape Cod. It's a Colonial shingle style home located on a pond. There is a small shingle style shed in the backyard. It's on .24 acre with a small dock with a row boat. No garage. 4 fireplaces and 2 of them working. 1,800 square feet, 5 bed, 2 bath, 2 living rooms. On historic registry.

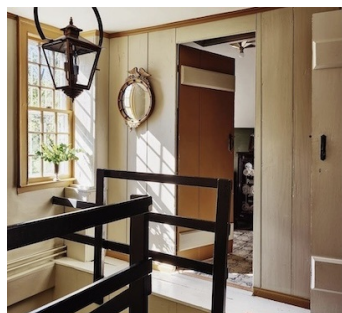
Restrictions:

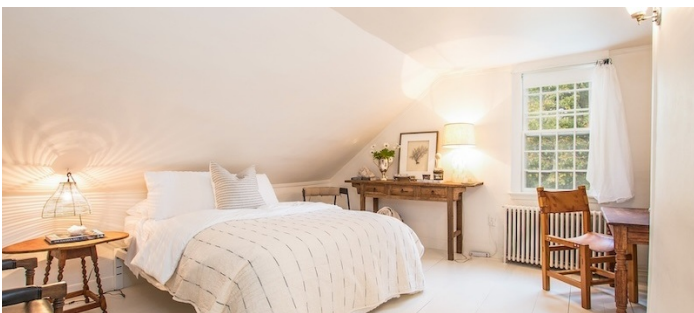
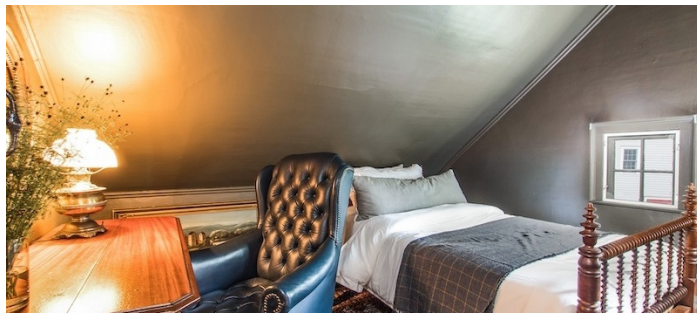
Requests to nail into walls or to paint walls must be approved in advance.

No shoes inside; please protect floors and bring shoe covers.











AERIAL

