

5101

# Southampton, The Hamptons

## LOCATION

Southampton, NY 11968

## SPECS

3 acres

## DISTANCE FROM NYC

97 miles

## CATEGORIES

Beach House, House

## TAGS

Architectural, Backyard Lawn, Balcony, Bathroom, Beach, Bedroom, Deck, Fireplace, Floor to Ceiling Windows, Garage, Kitchen, Living Room, Modern Contemporary, Ocean or Bay, Pool Outdoor, Porch, Staircase, Staircase Ext, Tennis Court, Terrace Patio, Water View, White Spaces, Wood Floor

## Notes

Large property built in 1982 on the beach in Southampton. The two story home is a typical 1980's style beach mansion with a large double height ceiling in the living room and a bridge passage above the living room connecting the two bedroom wings. The house has not been updated since it was built and is a superb example of 1980's US architecture.

There are 4 bedrooms all ensuite - an office and an eat in kitchen. The house has a pool deck pool house with sauna and a wooden walkway to the main beach.

On the back side the house is accessed by a short driveway and looks out over Shinnecock Bay. It benefits from sunrise and sunset due to its orientation. There is a large garage and storage area under the house. The property sits on 3 acres and has parking for several vans and cars.

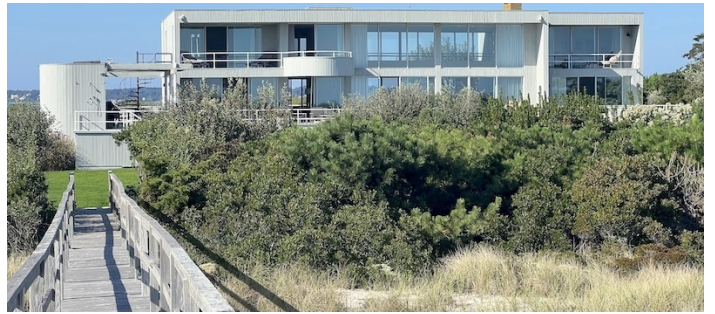








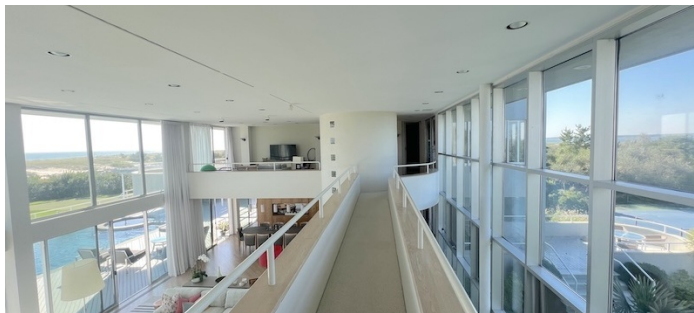
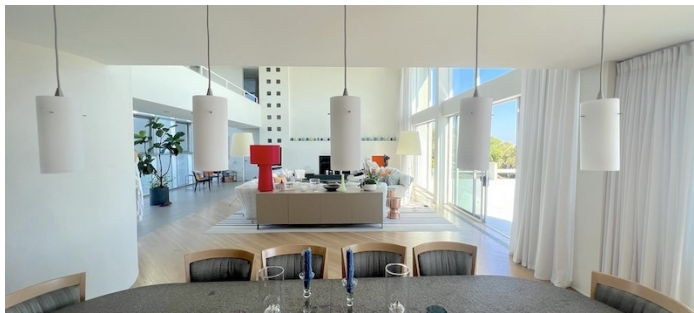
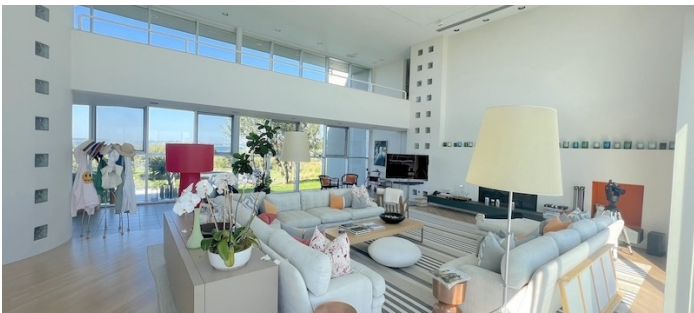




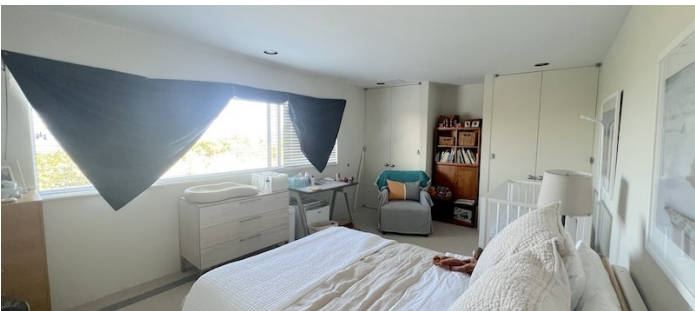
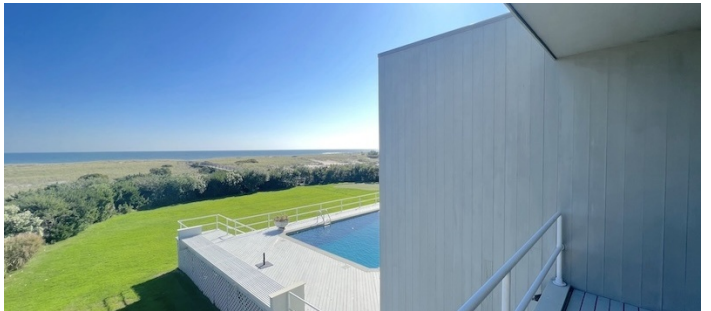




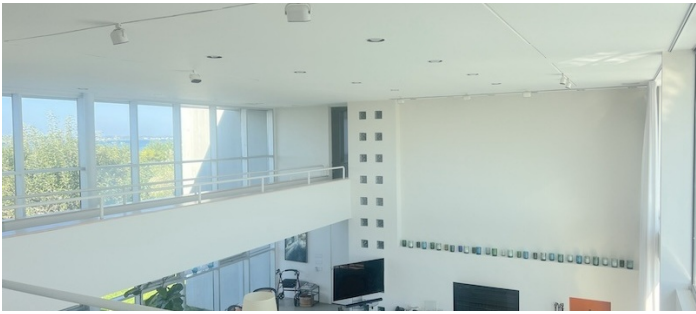
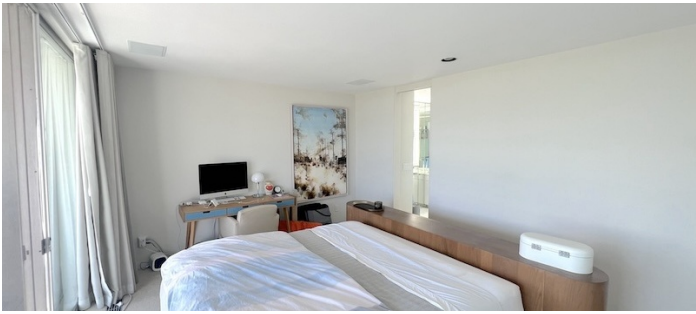




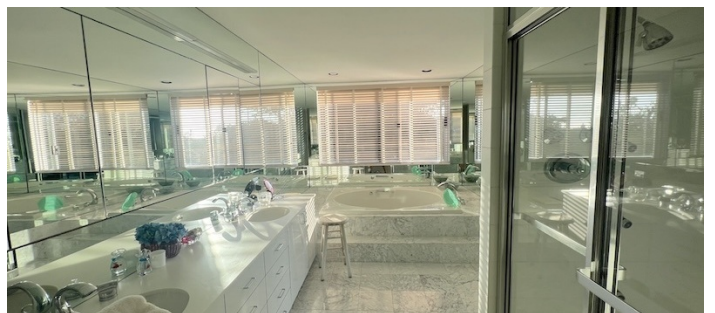
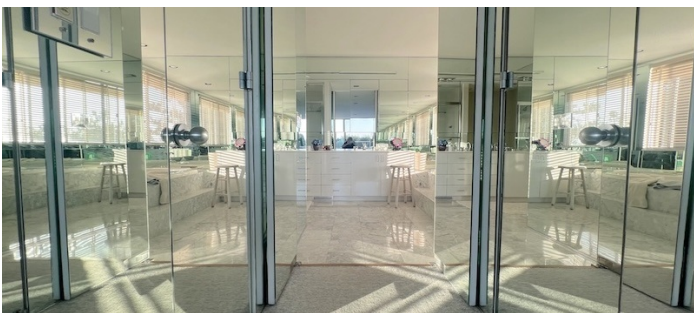
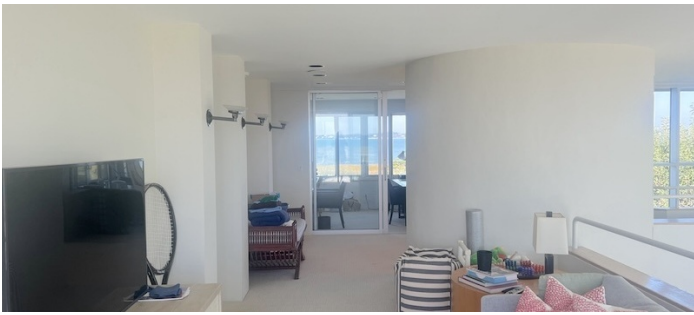




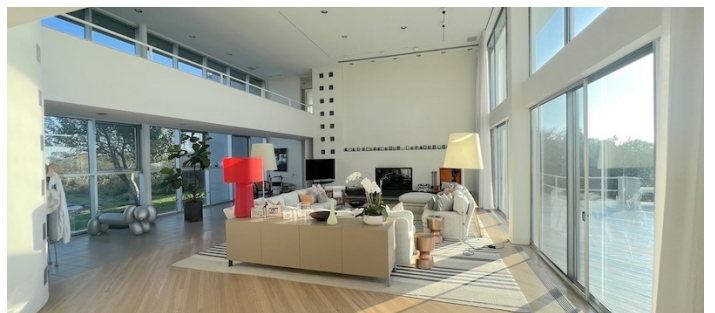
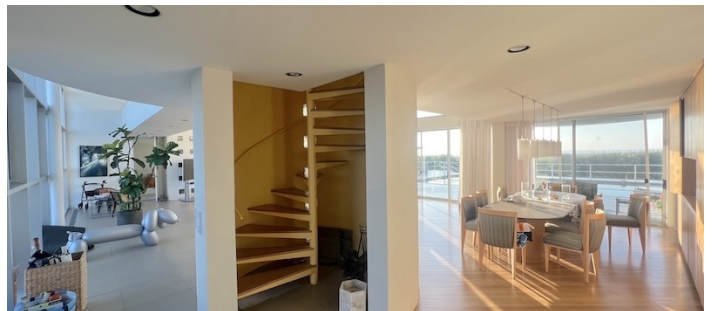




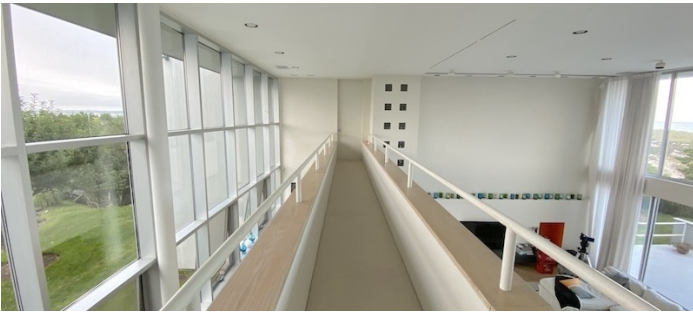
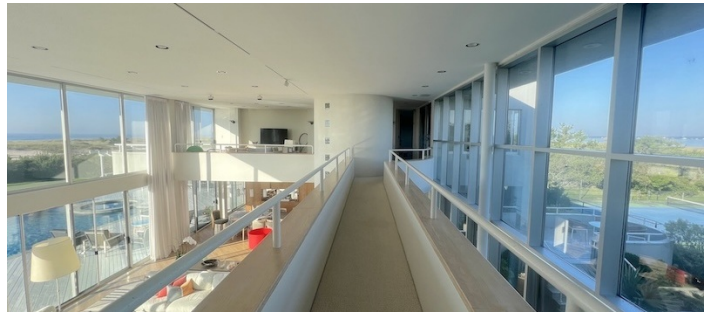
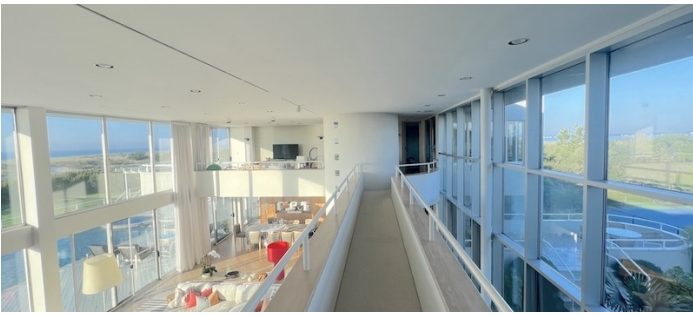
















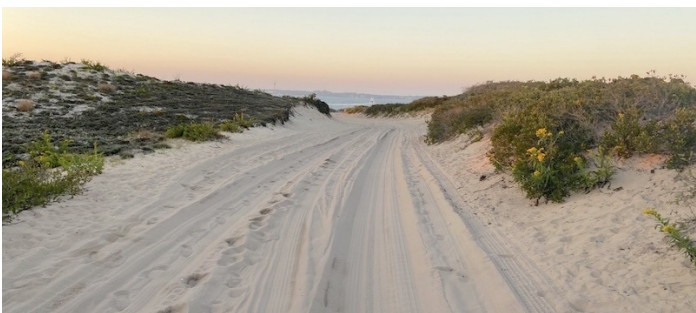






BEACH















TENNIS COURT



