

9069

Upper East Side, Manhattan

LOCATION

New York, NY 10065

CATEGORIES

* In the Zone, Apartment, Mansion, Townhouse

TAGS

Bar, Bathroom, Bedroom, Classic Grand, Colorful, Elevator, Fireplace, Kitchen, Library Room, Living Room, Ornate, Parquet, Piano, Skylight, Staircase, Terrace Patio, Traditional, Wallpaper, Wood Floor

Notes

Neo-Georgian brick townhouse built in 1872 and designed by architect John Prague.

This 8,000 square feet, 20-foot-wide home has opulent, rococo decor with a Versailles influence. Features include: inlaid marble and wood flooring, carved-wood moldings and paneling, mahogany doors, hand-painted Chinese panels, and an elevator with mirror panels and painted trompe l'oeil walls. The master bedroom on the fourth floor includes two skylights, mahogany cabinets and a fireplace.

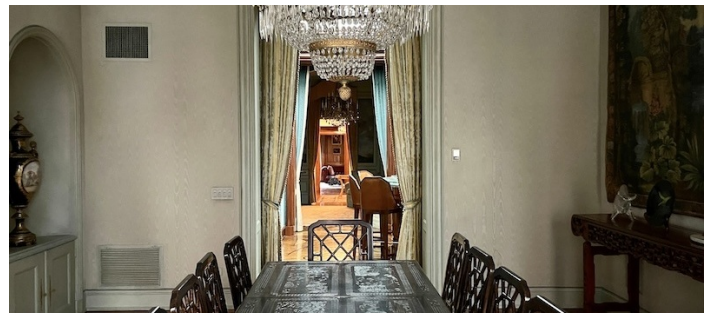
There's also a private terrace, along with a rooftop deck.



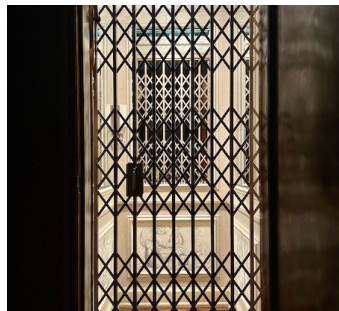
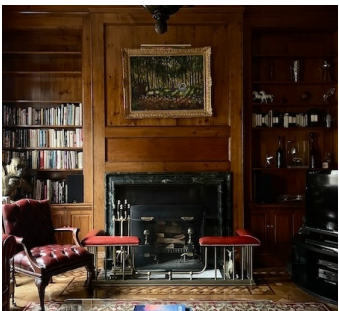




PARLOR LEVEL - 2ND FLOOR















ROOF TERRACE



EXTERIOR

