

 LOCATION

Brooklyn, NY 11203

 SPECS3,000 sq ft
10' ceiling height TAGS

Bay Window, Bedroom, Bohemian, Distressed Patina, Eclectic Quirky, Kitchen, Living Room, Staircase, Stoop, Terrace Patio, Traditional, Walk-in Closet, White Spaces, Wood Floor

 CATEGORIES

* In the Zone, Apartment, Townhouse

Notes

Classic historic Flatbush townhome built in 1910 with an open floor plan. Two full floors of the house (main and garden level) are available for rent, as well as the backyard.

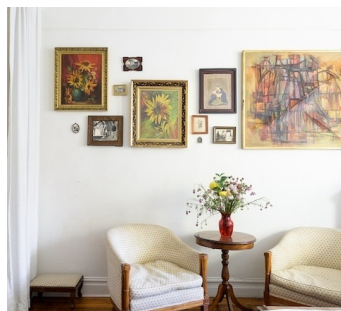
The decor of the house leans English cottage, rustic country style with bohemian touches, lots of natural wood tones and eclectic furniture and art. There is a private garden with a porch in connected to the kitchen.

The kitchen, living room, and bedroom are on the main parlor floor. Each room is spacious with high ceilings and beautiful original wooden floor boards running through the whole house. The rooms are separated by large architectural arches between each room allowing the house to feel open and grand. There are curtains between each room if need to section off.

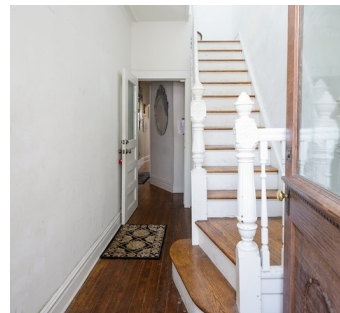
The garden level has a large den, guest bedroom, music studio, and dressing room; can be used for holding or for hair/make up and craft services.

Restrictions:

Limit of 50 people inside.



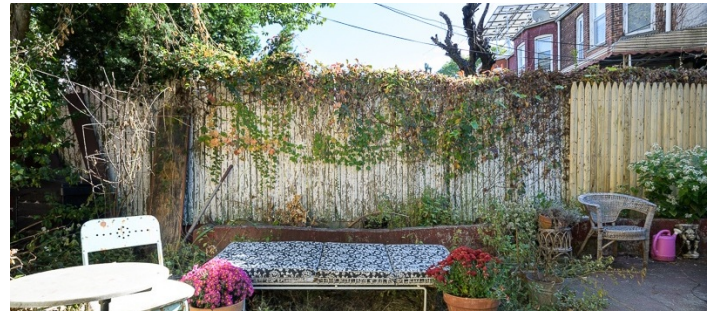
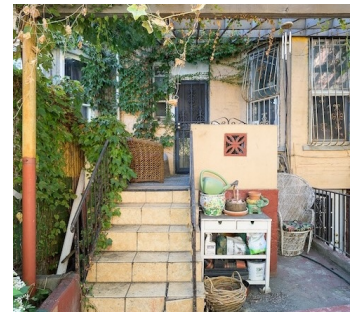




GARDEN LEVEL







EXTERIOR

