

GROUND FLOOR - VIEW FULL DETAILS BELOW

 LOCATION

Bronx, NY 10454

 GETTING THERE

138th Street & 3rd Ave station

 DISTANCE FROM NYC

10 miles

 TAGS

Bathroom, Bedroom, Clawfoot Tub, Colorful, Eclectic Quirky, Fireplace, Kitchen, Library Room, Living Room, Modern Contemporary, Staircase, Traditional, Wood Floor

 SPECS

2,500 sq ft
12' ceiling height

 POWER

200 amps

 CATEGORIES

* In the Zone, Apartment, Brownstone, Townhouse

Notes

Three-story Victorian townhouse sits on a quiet block in Mott Haven, with high ceilings, historic original details, and sumptuous furnishings.

This historic townhouse was built in the 1890s and was lovingly restored. Featuring nine uniquely-styled rooms across three floors (Parlor Floor, Ground Floor, and Top Floor) the house offers an abundance of inspiring spaces.

Exterior features include a greenroof outside the Parlor windows and a ground floor patio that both allow for lighting options. There is a beautifully landscaped ground floor garden at the back of the house.

Areas of use must be determined in advance. Pricing varies according to floors used.

Restrictions:

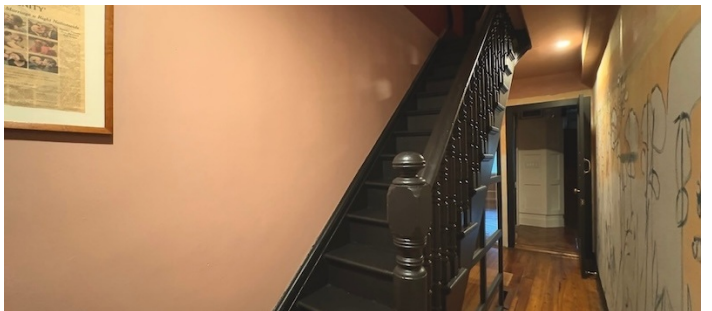
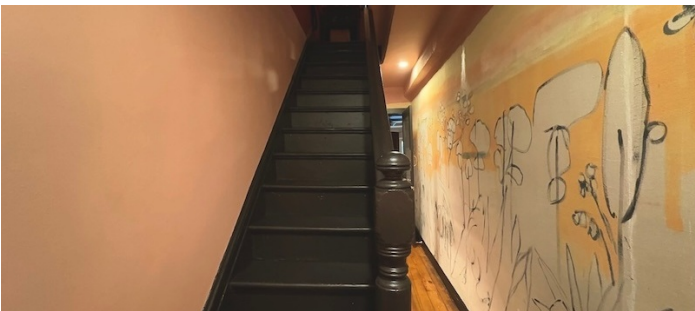
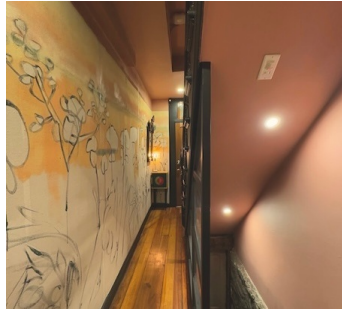
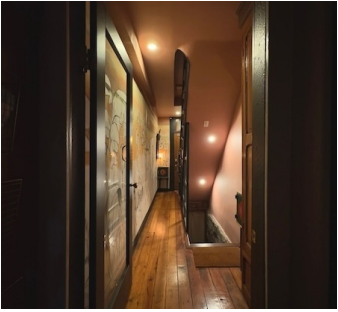
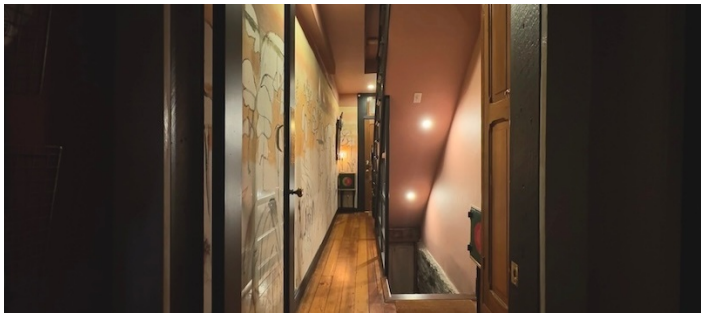
30 people max allowed inside. No shooting outside of 7am-9pm.

No painting or nailing into walls.

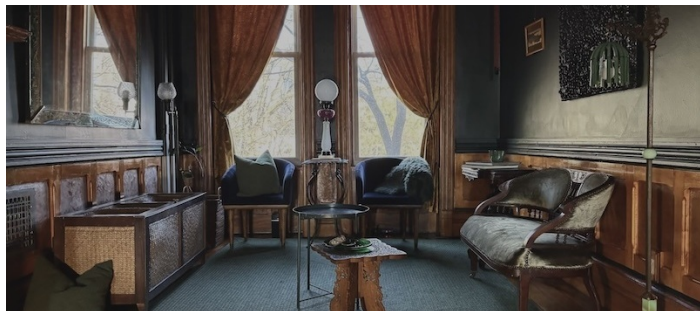
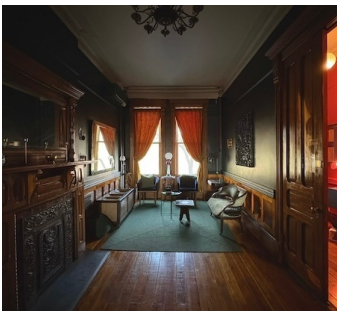
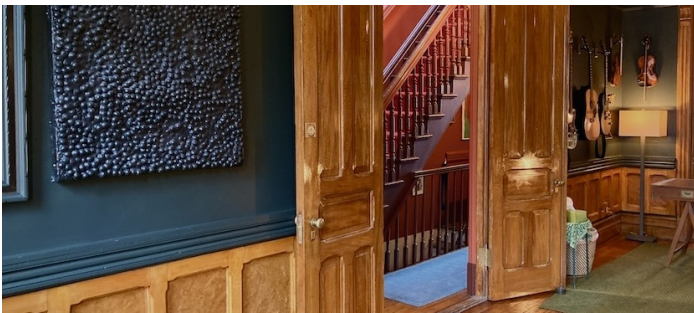
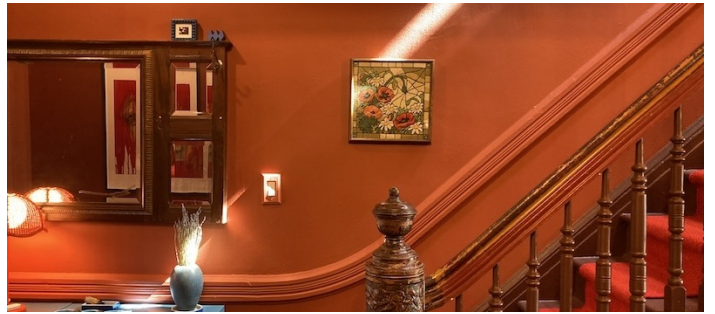
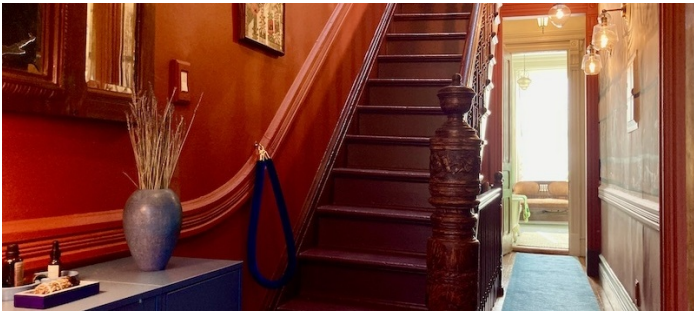
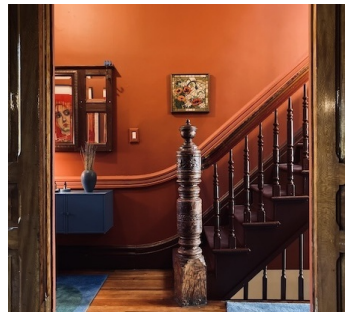
Requests to move artwork and/or furniture must be approved in advance.

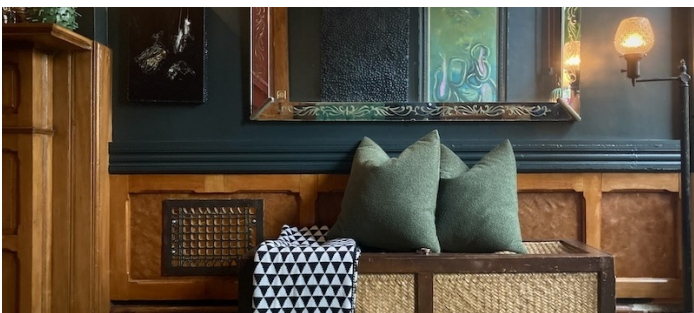
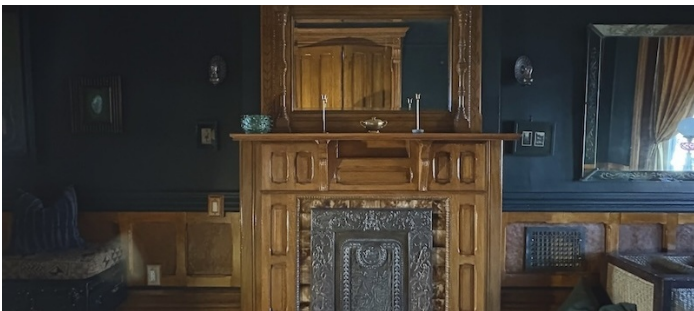
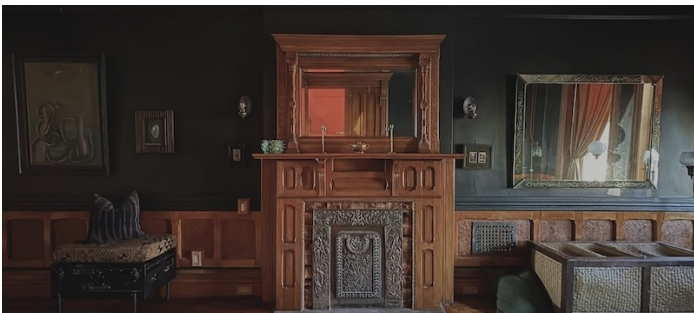


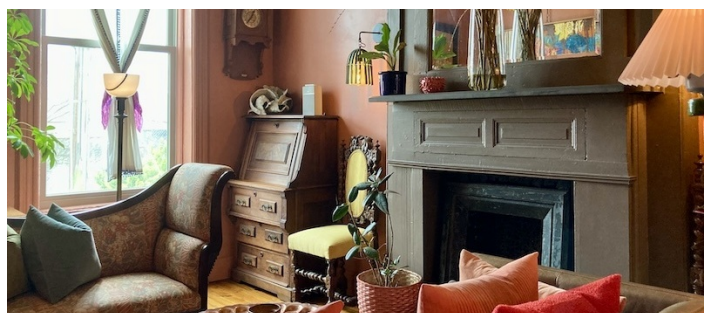
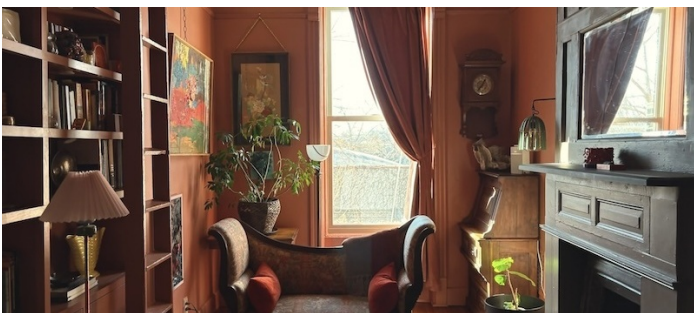
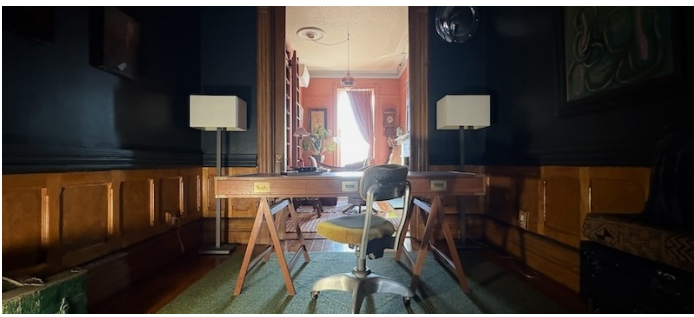




PARLOR FLOOR

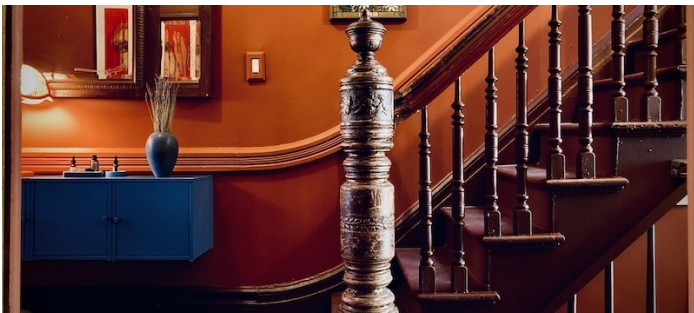
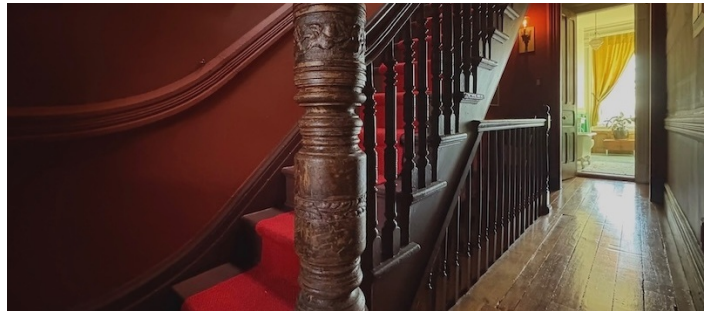
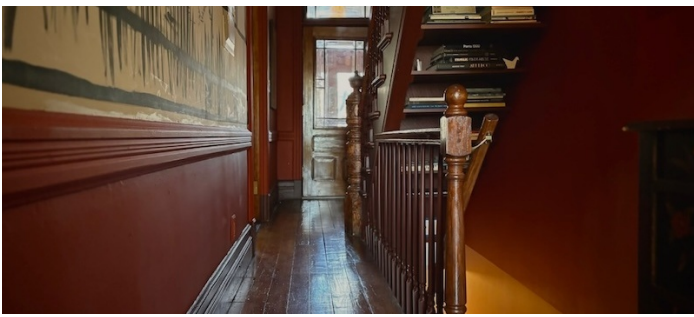






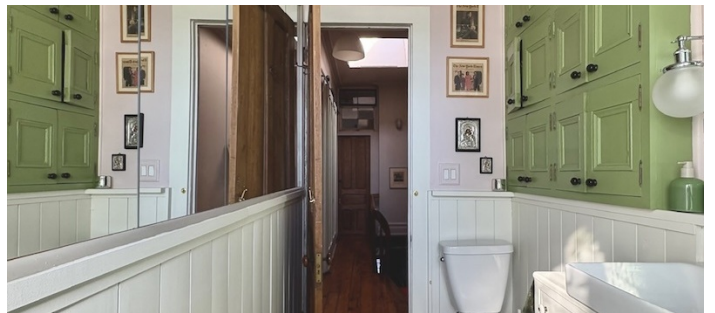
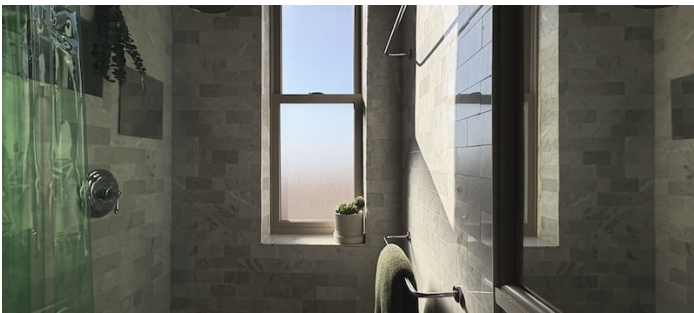
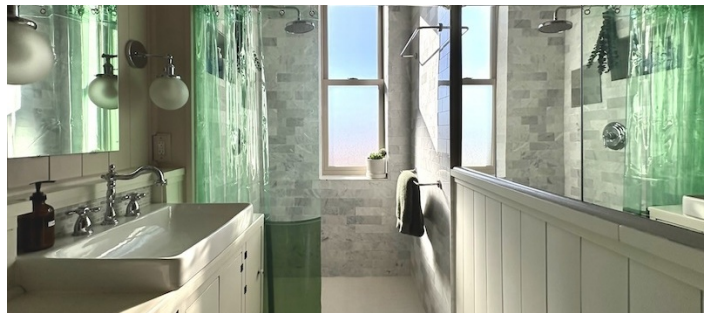
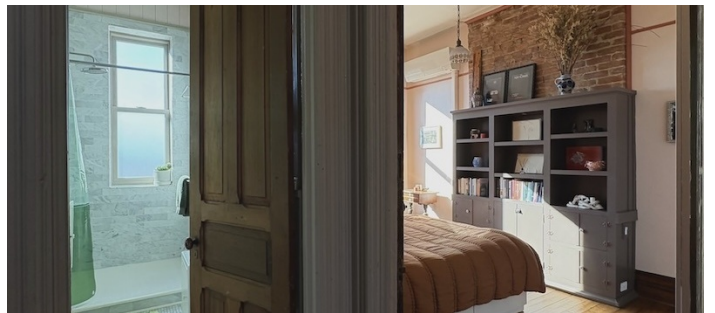


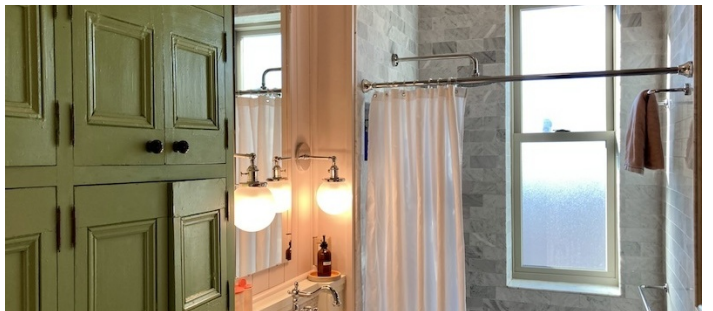
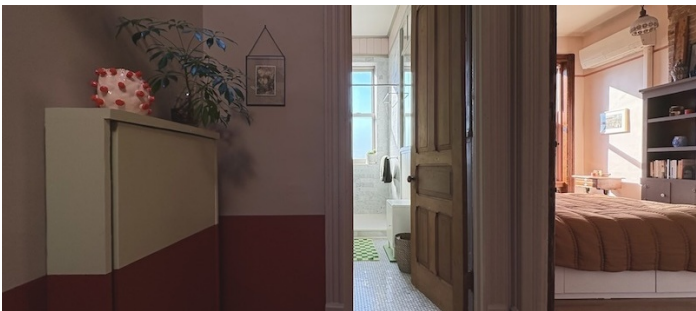
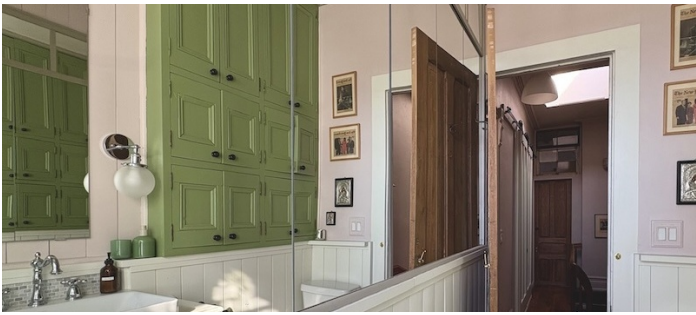


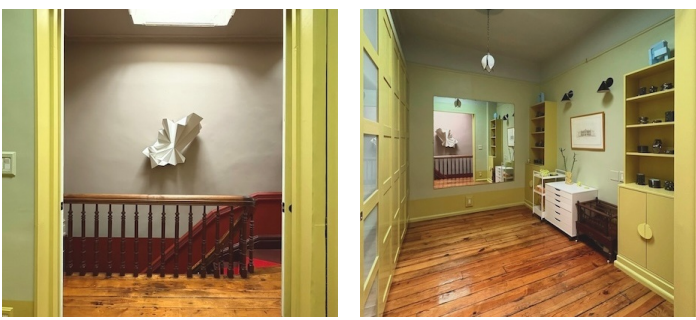


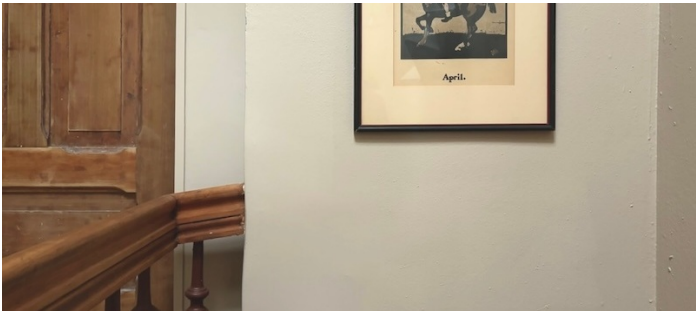
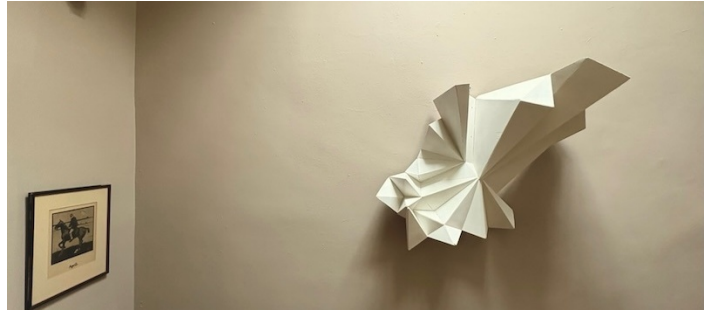


TOP FLOOR









EXTERIOR

