

2037

Midtown, Manhattan

LOCATION

New York, NY 10022

SPECS

1,400 sq ft interior

1,200 sq ft terrace

TAGS

Balcony, Bathroom, Bedroom, City View, Fireplace, Garden, Kitchen, Living Room, Ornate, Parquet, Rooftop, Terrace Patio, Traditional, Water Tower View, Wood Floor

CATEGORIES

* In the Zone, Apartment, Penthouse, Roof Top

Notes

Print only, excellent light, views, wrap-around terrace.

Scouting is recommended as some things may have changed.

Chandeliers, crown molding, parquet floors, ornate, fireplace, built-in bookshelves, tiled bathroom, terrace, view of city.

Restrictions:

Floors must be protected.

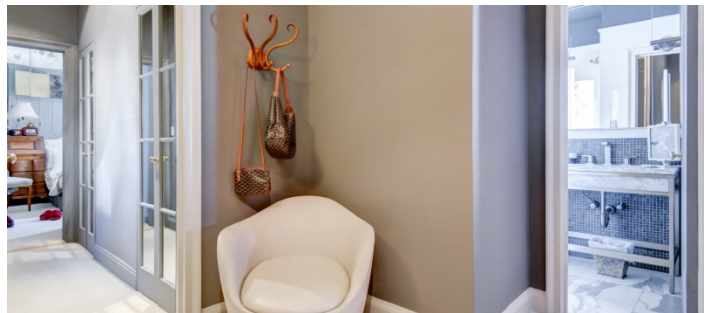
This is a doorman, co-op building. No shooting in building lobby.

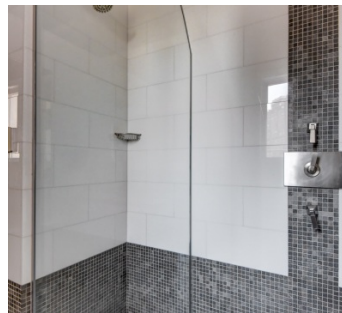
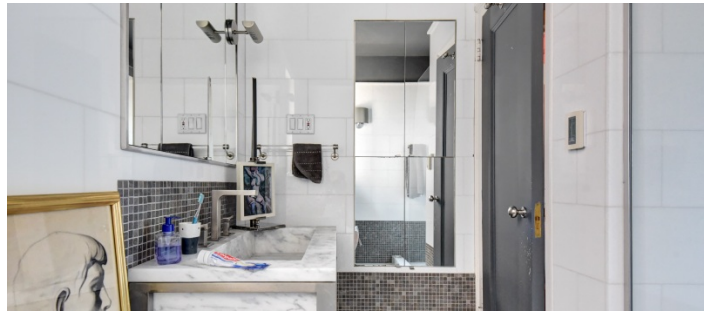
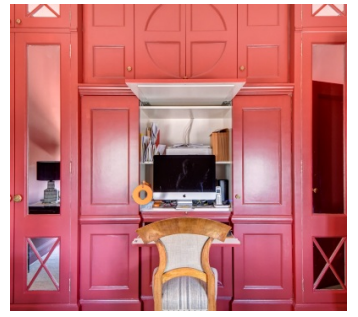
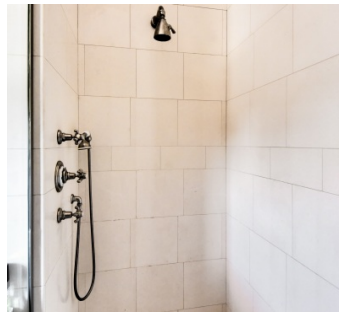
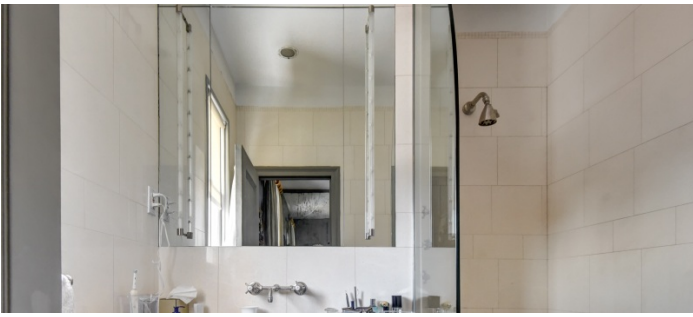
Deliveries and pickups are only available between 8:30am - 4:30pm. Arrangements for next day pickups may be made if necessary.

Some pieces and mirrors do not move.









TERRACE

 SPECS

1,200 sq ft terrace

