

2ND FLOOR - VIEW DETAILS BELOW

 LOCATION

Long Island City, NY, 11101

 DISTANCE FROM NYC

8 miles from NYC

 TAGS

Bathroom, Bedroom, Bohemian, Colorful, Distressed Patina, Eclectic Quirky, Elevator, Exposed Brick, Kitchen, Library Room, Living Room, Piano, Raw Industrial, Skylight, Staircase, Traditional, Wallpaper

 SPECS

9,000 square feet  
4 Floors

 CATEGORIES

\* In the Zone, Event Space, Loft, Studio

## Notes

Film friendly

This unique raw space is a great blank canvas for your shoot, it has 2000 pieces of furniture to choose from for rent, and several different looks to work with.

4 floors, each floor 9,000 sq ft, is heated, has bathroom facilities.

Also available for weddings and receptions - rates vary according to areas of use & props used.

Note: it is best to scout this location since it is so large and better to choose the areas you would like to work in. Sharing floors during shoots is very common for this space. Hanging curtains and moving props is the responsibility of the renter.

Props move around regularly so what you see set up in images may be different when you shoot, this is why scouting is very important.

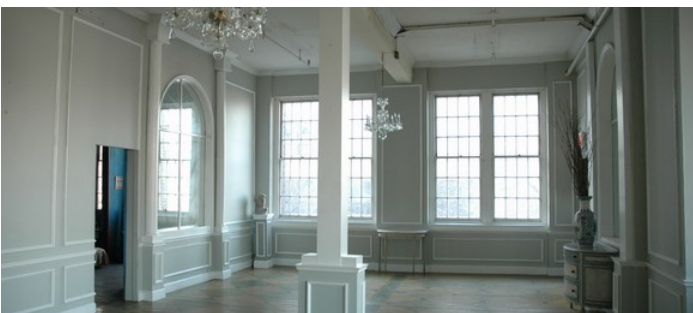
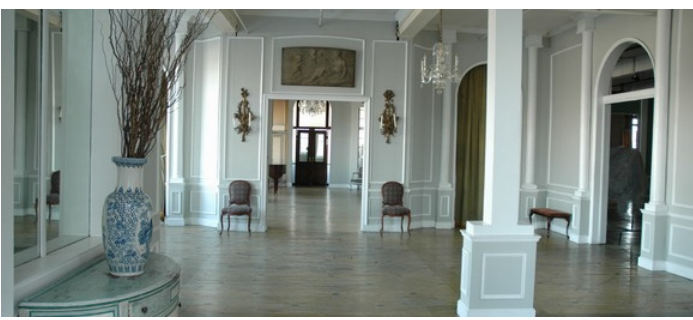
Chandeliers, arched windows, crown molding, design in wood floors, columns, arched doorways, open, exposed brick, distressed white bricks, wall paper, French doors, colorful, built in bookshelves, distressed wood, disheveled, eclectic, rustic, storage room, urinals.

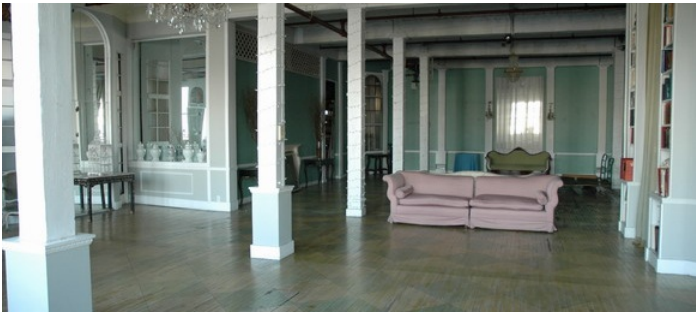
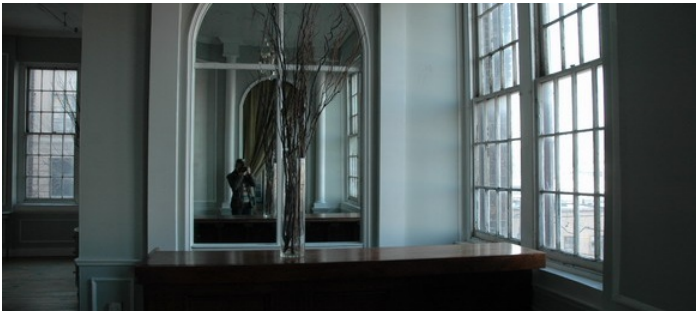
### Restrictions

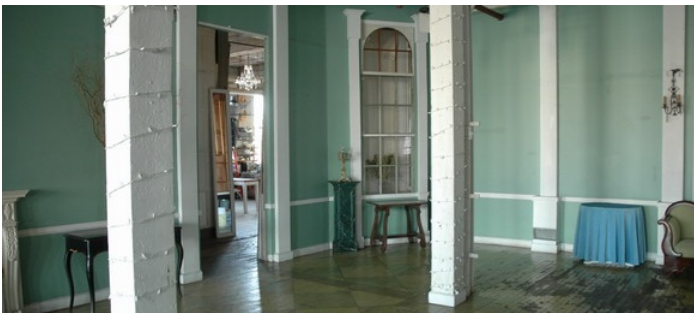
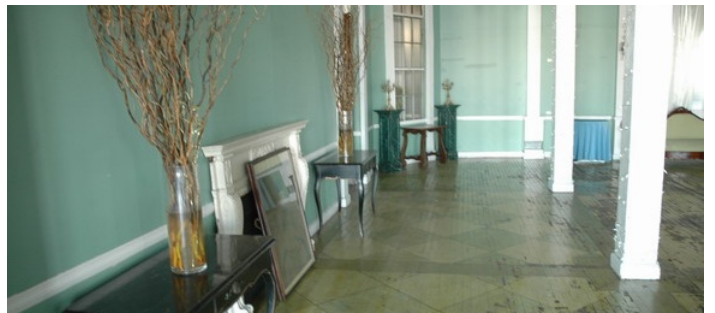
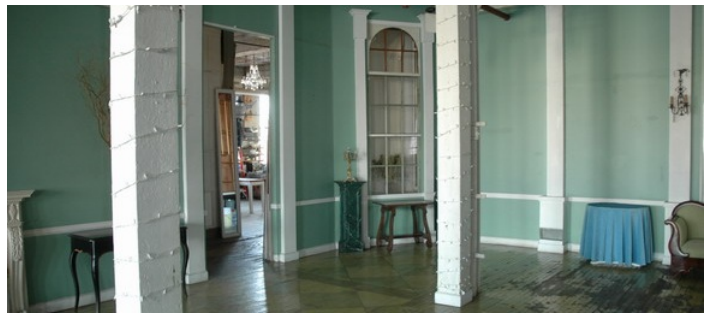
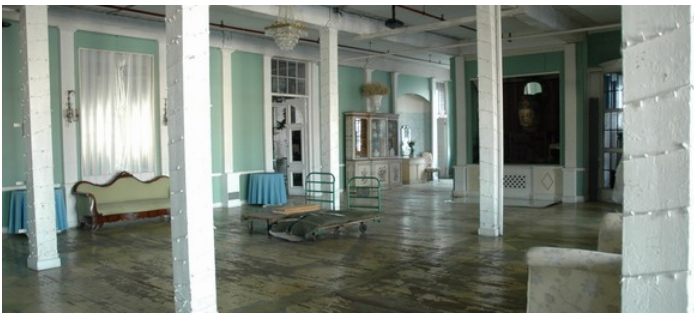
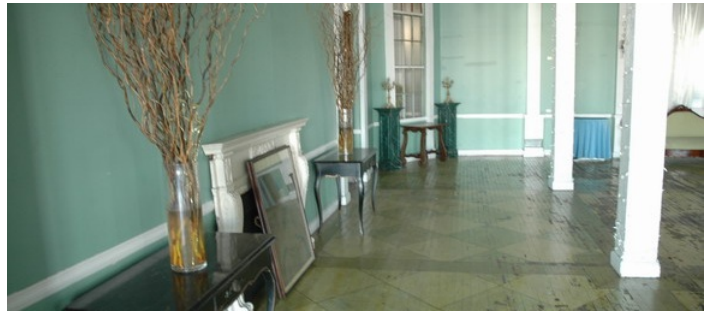
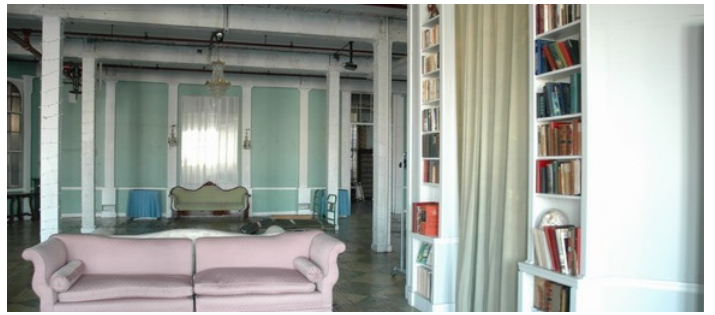
all floors must be protected, booties must be worn over shoes, areas of use determined in advance, etc.

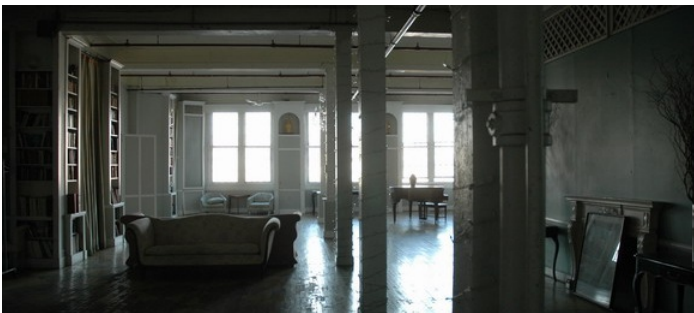
No Air Conditioning ( but has large industrial fans and some window units per floor).

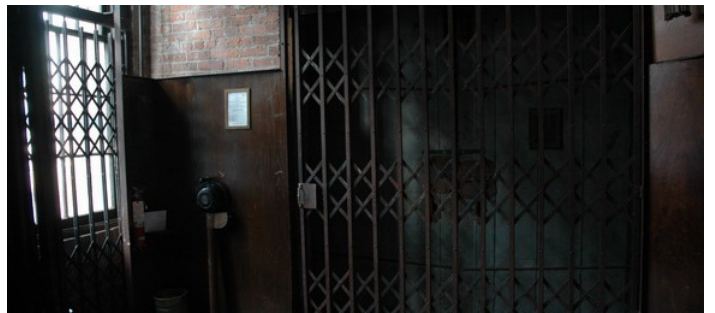
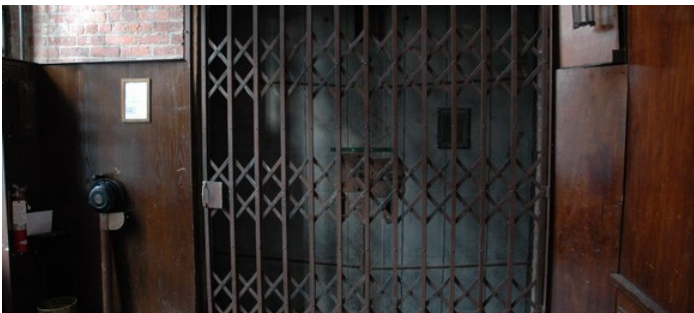
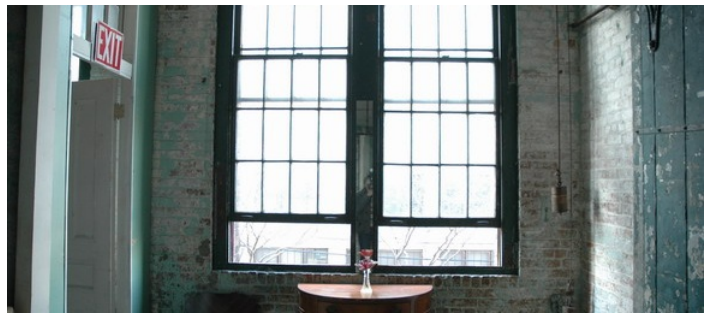
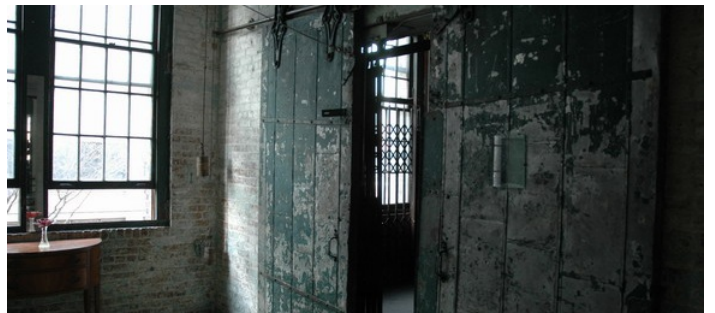
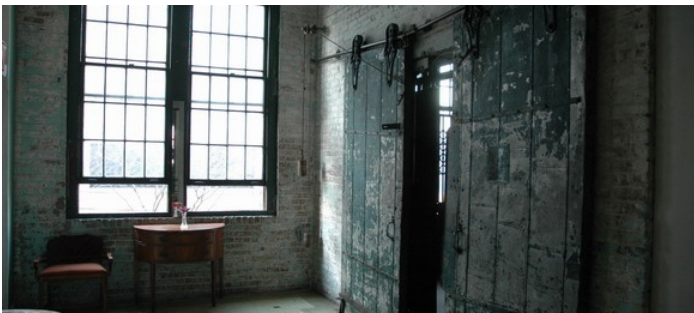


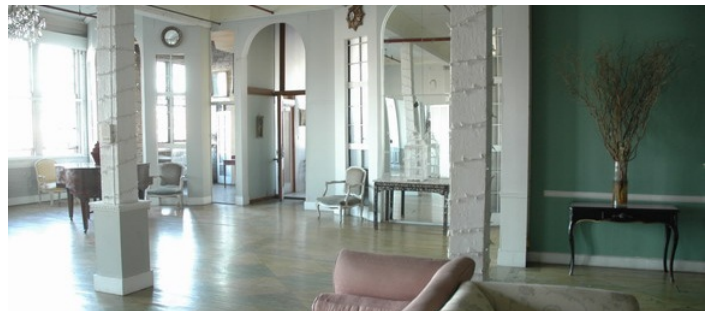
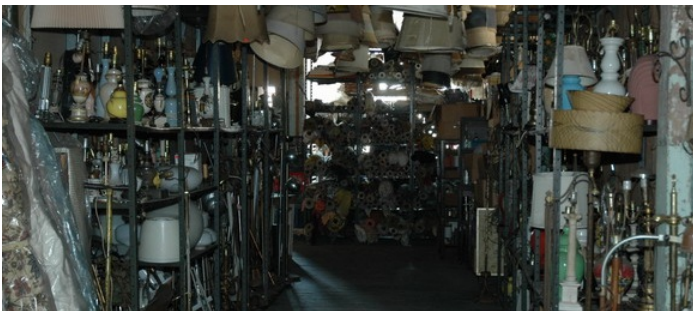
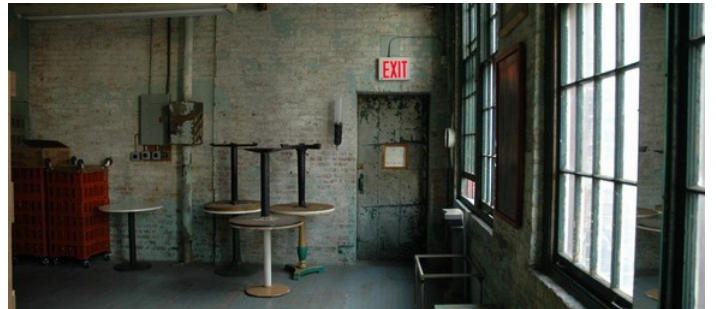
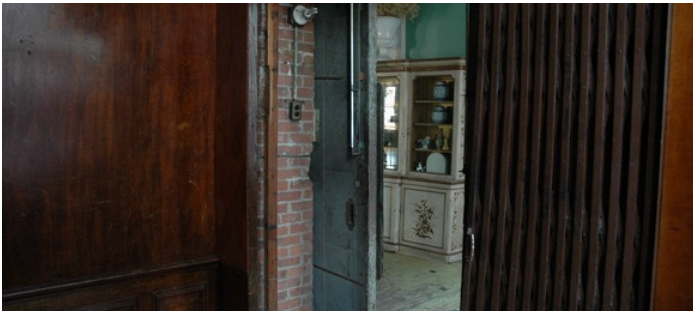
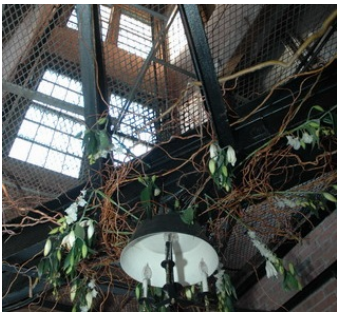




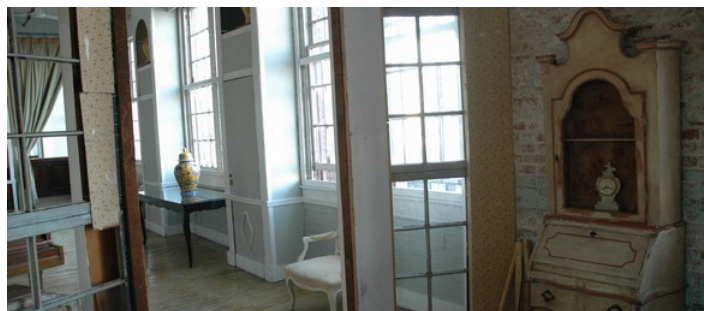
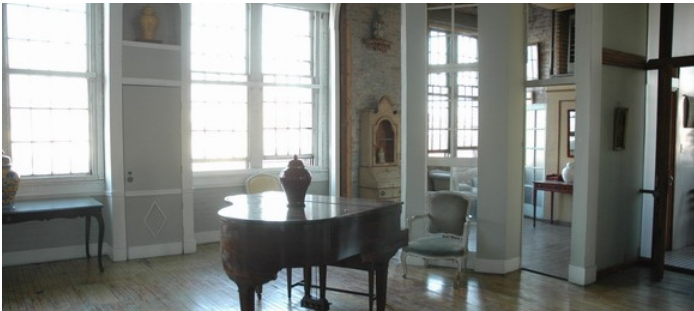


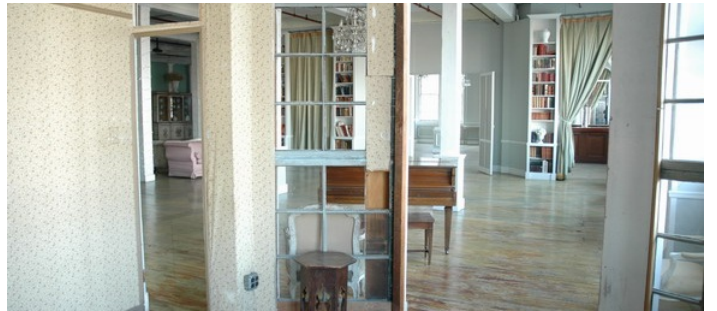


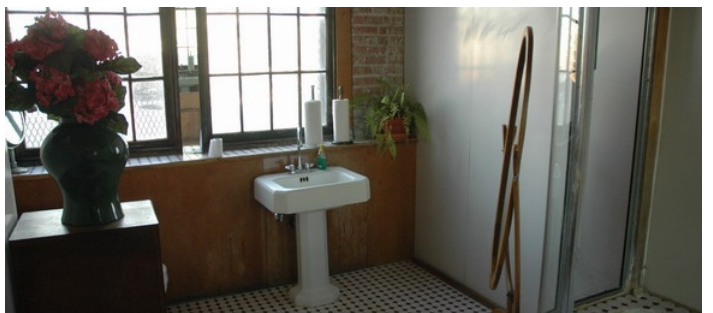
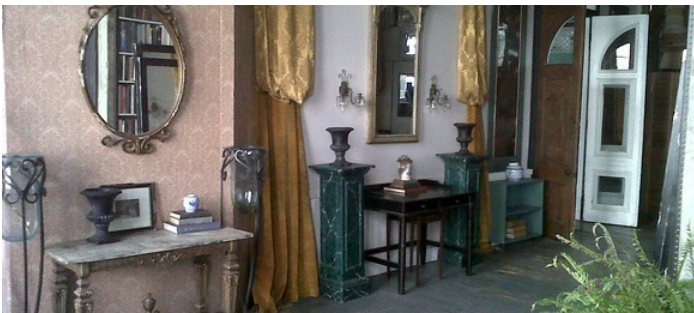


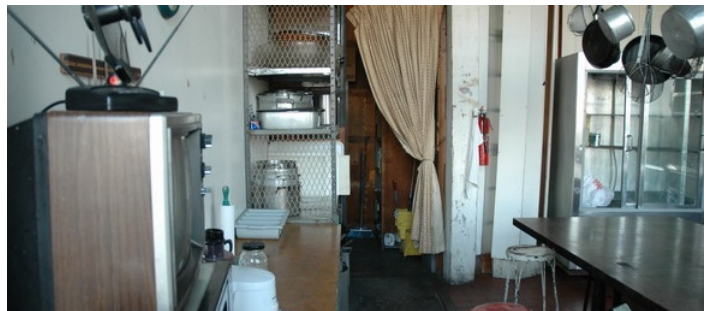
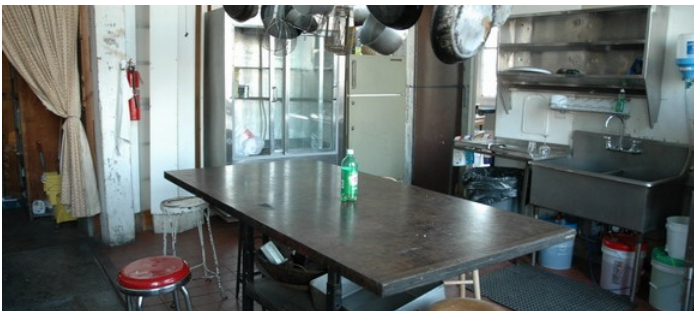
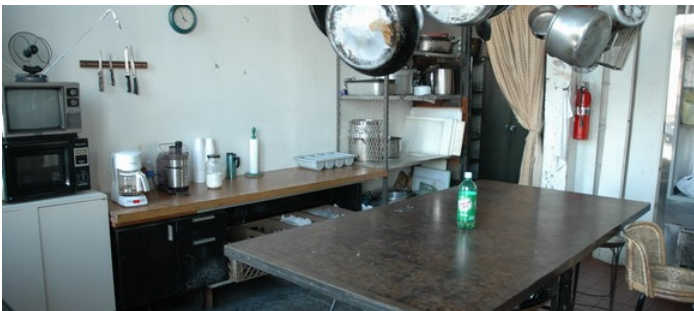


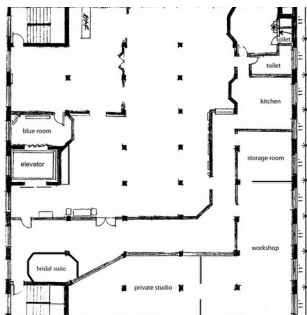
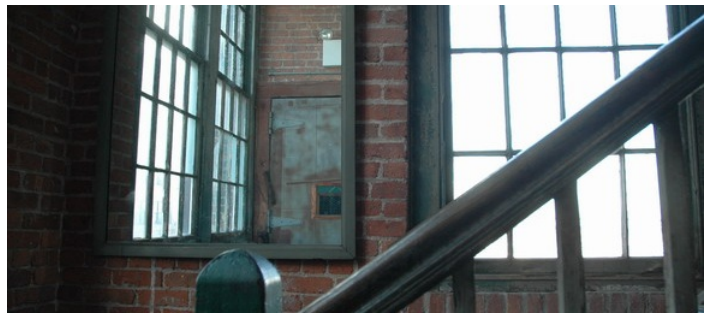
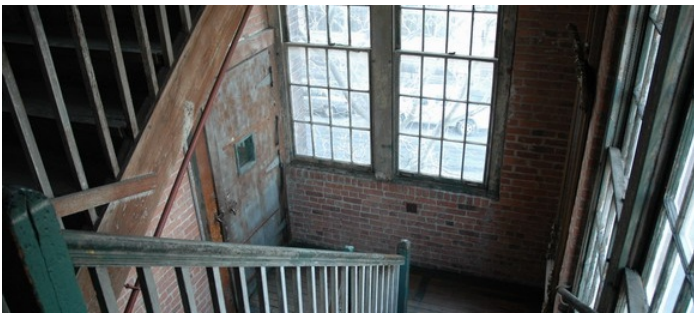
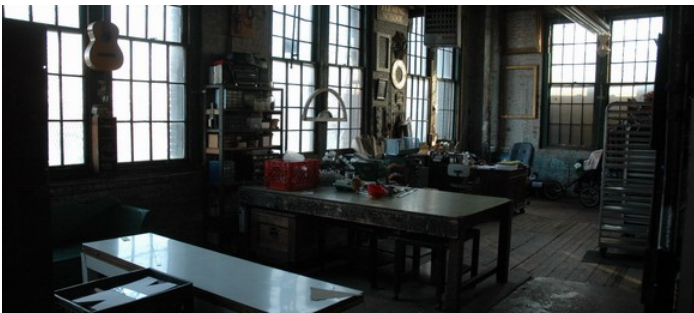
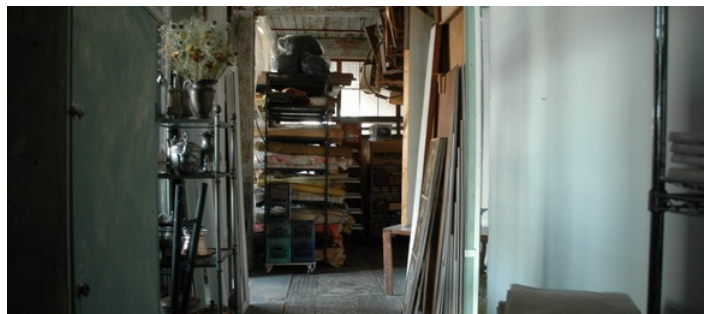










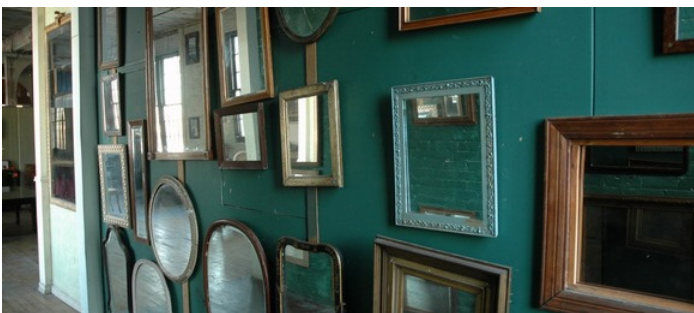
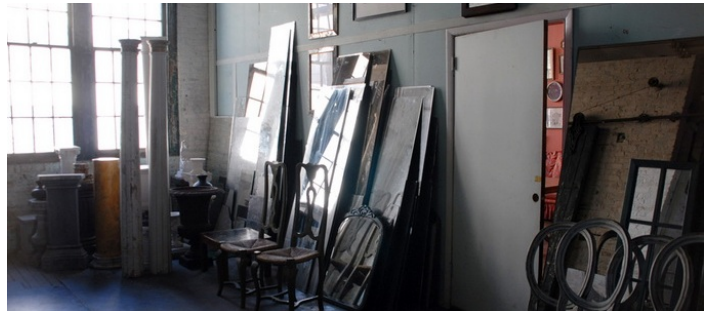


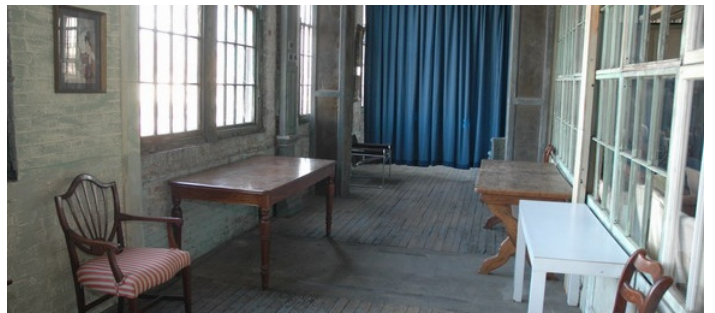
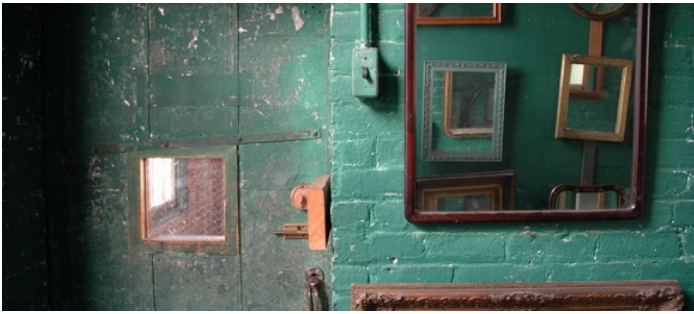
## 3RD FLOOR - VIEW DETAILS

 SPECS  
9,000 sq ft

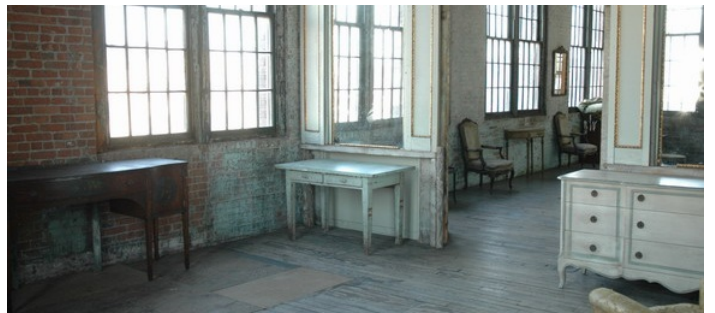
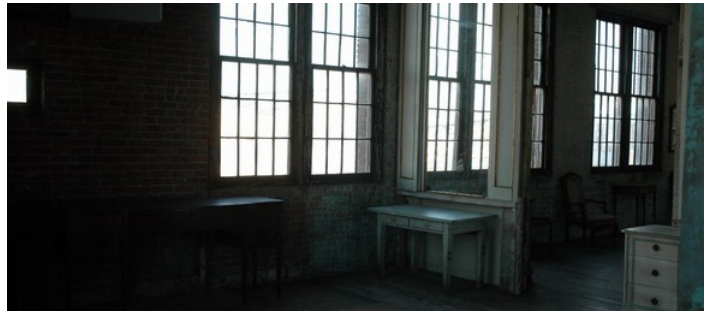
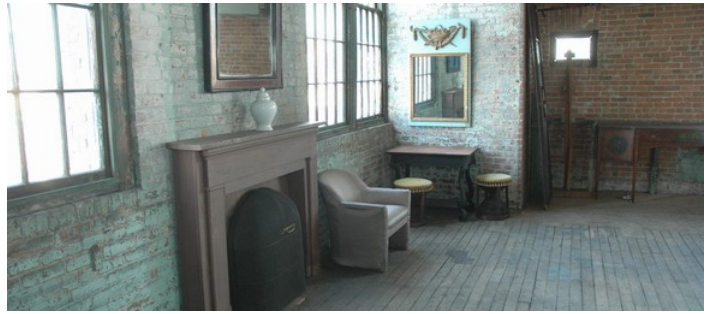
### Notes

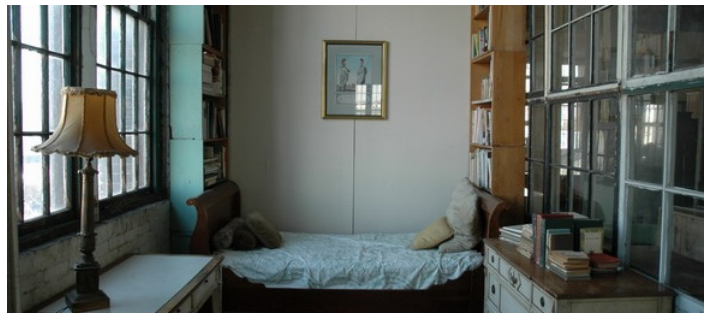
The third floor is our props floor. We have photo shoots and film shoots on this floor but no events. The ceilings are 12 foot tall and the windows are 8 feet. We do allow the fourth floor brides to get ready in the Red Room. The furniture is constantly being moved about and being reupholstered. You are allowed to use a few as props as long as you put it back. Please note that some pieces are very fragile.

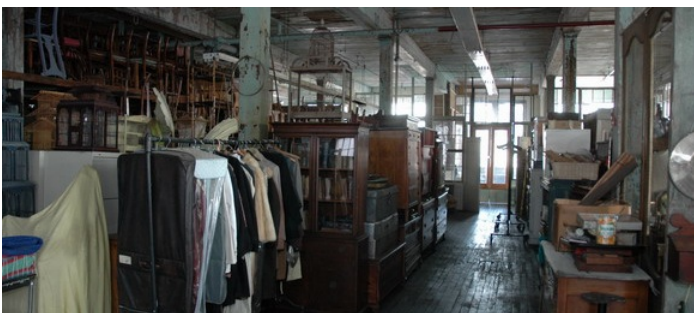
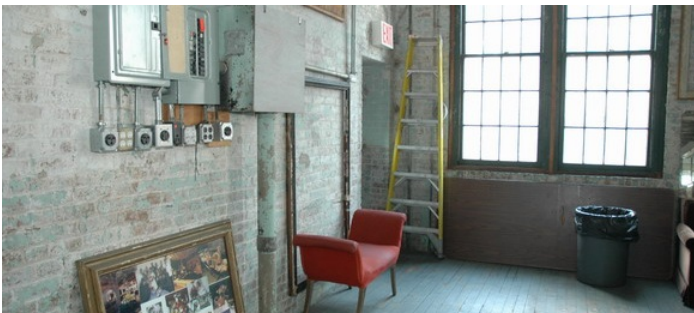
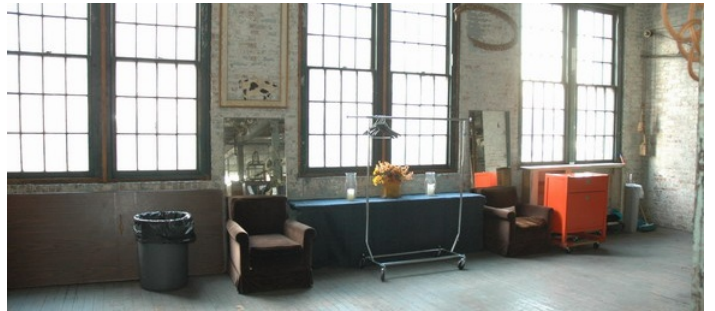
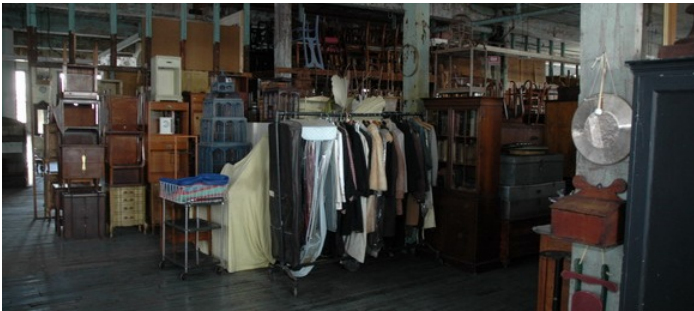


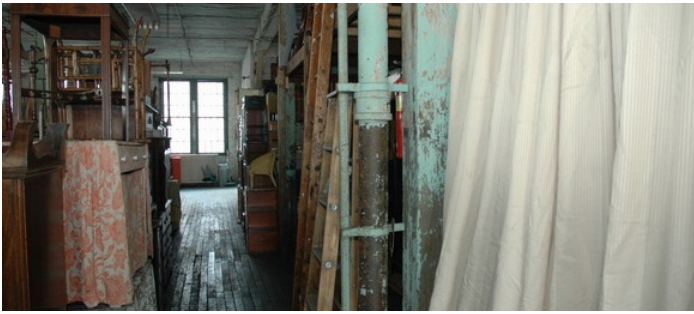


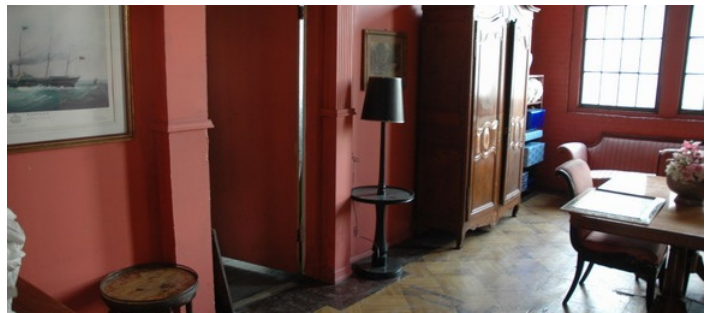
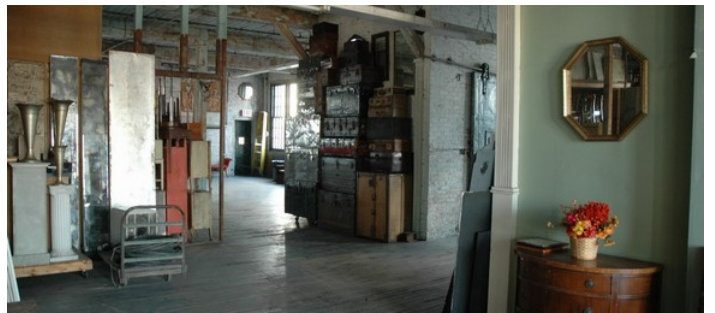
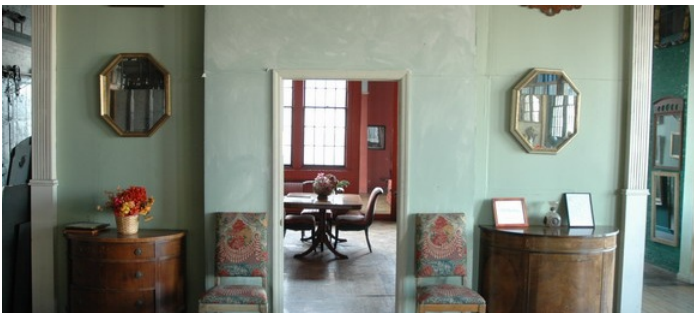


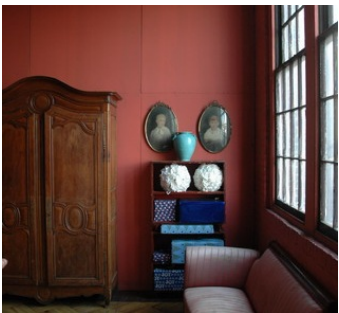
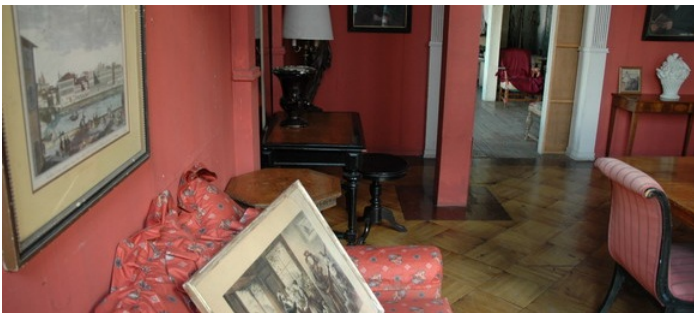
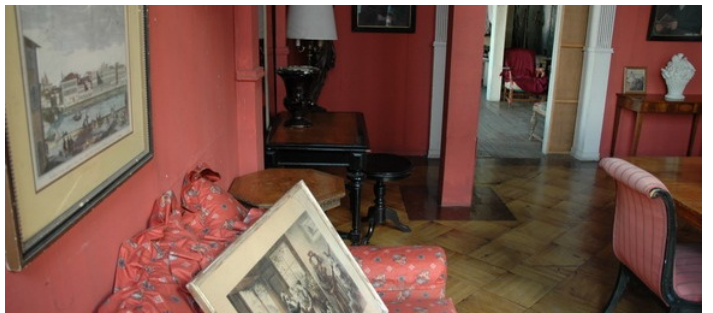


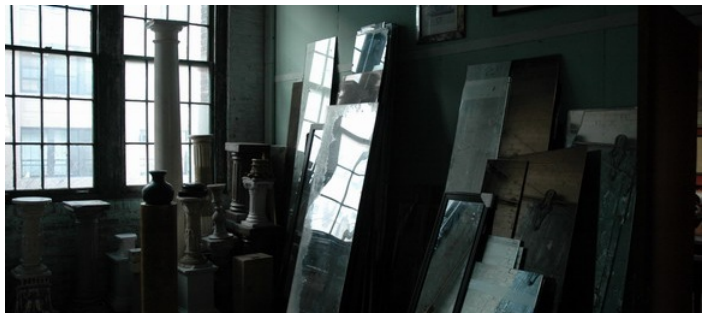
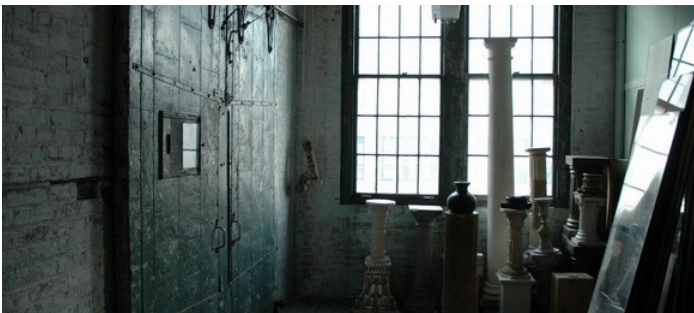
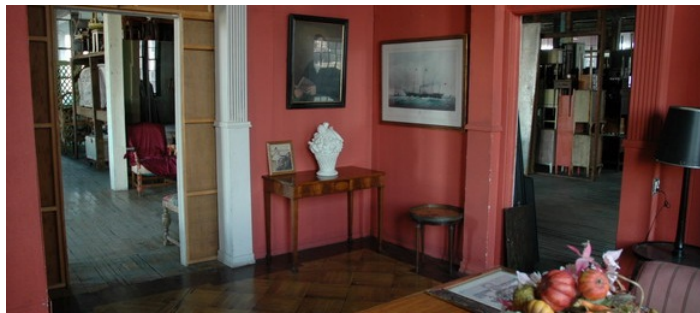
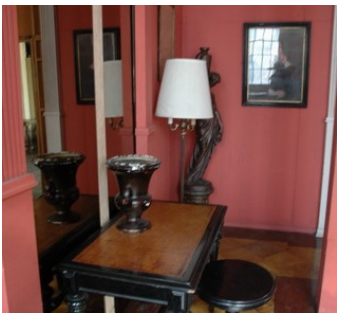
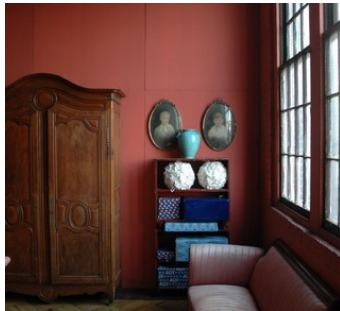
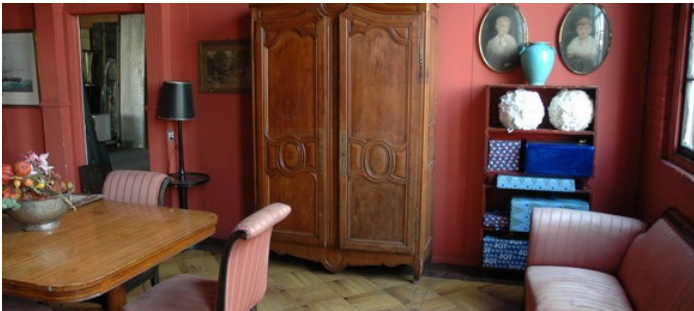


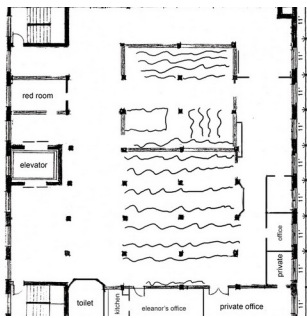
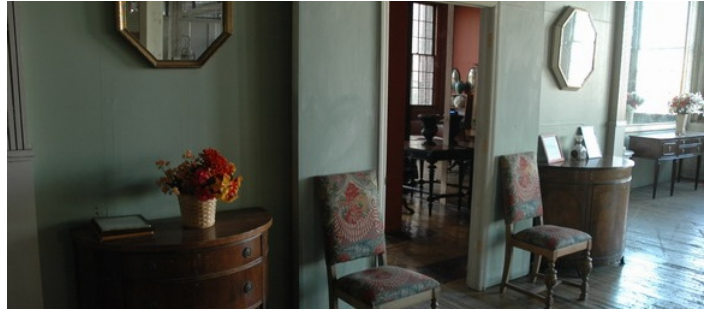













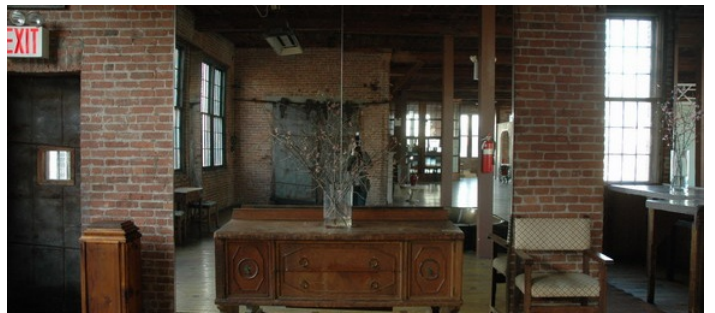
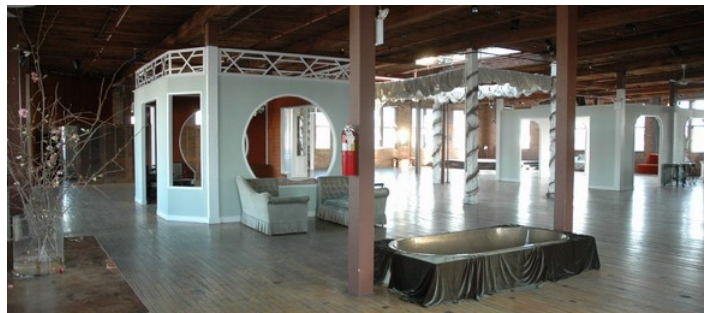
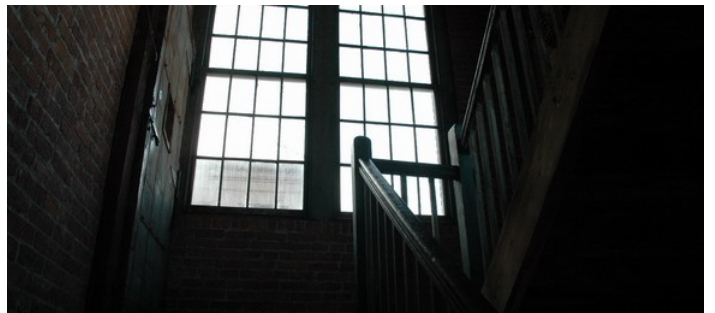
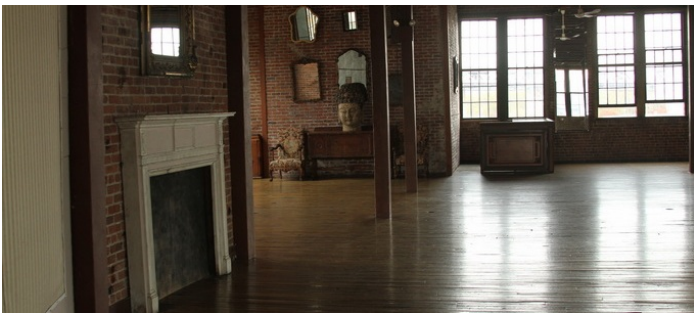
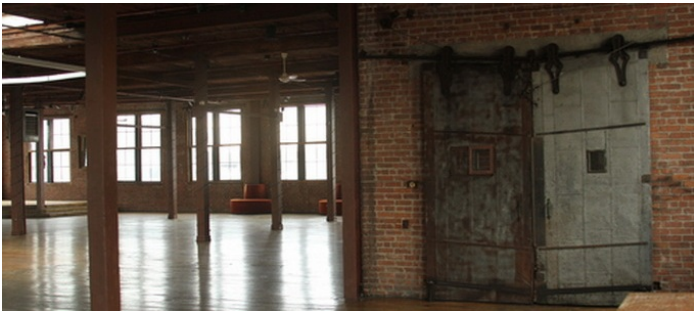


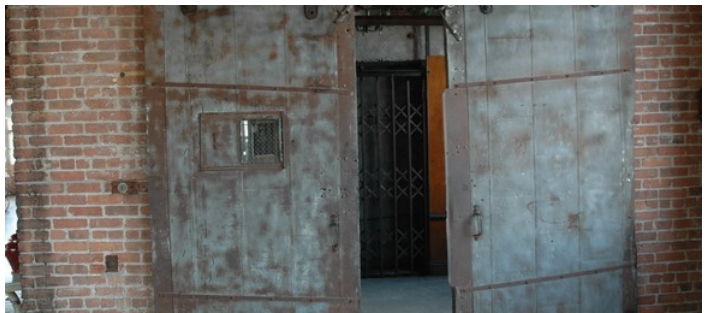
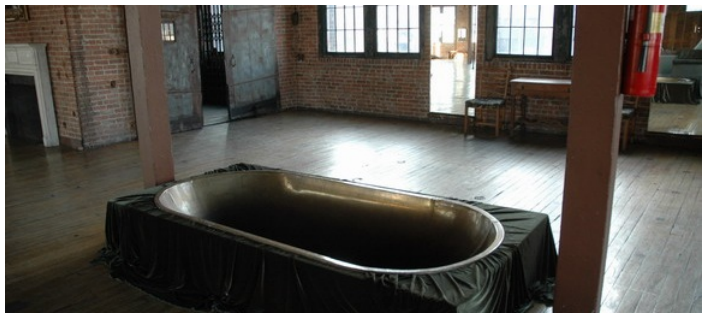
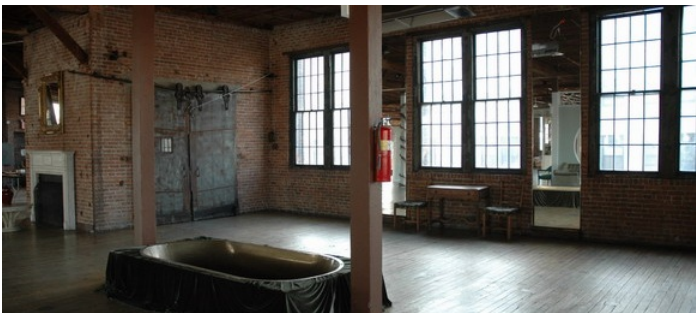
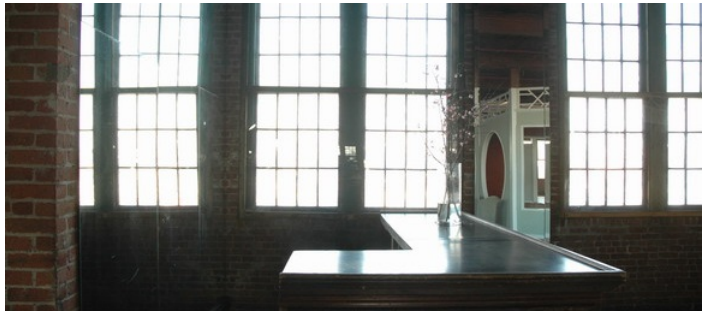
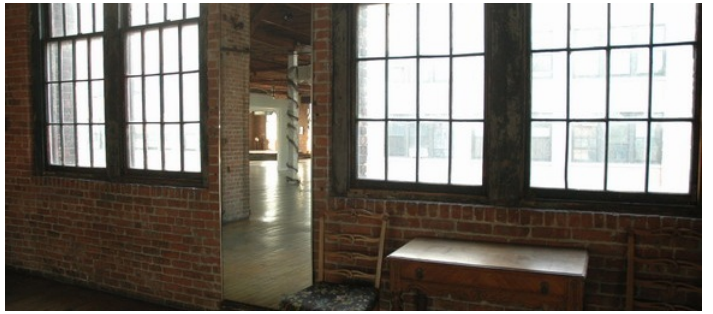
## 4TH FLOOR - VIEW DETAILS

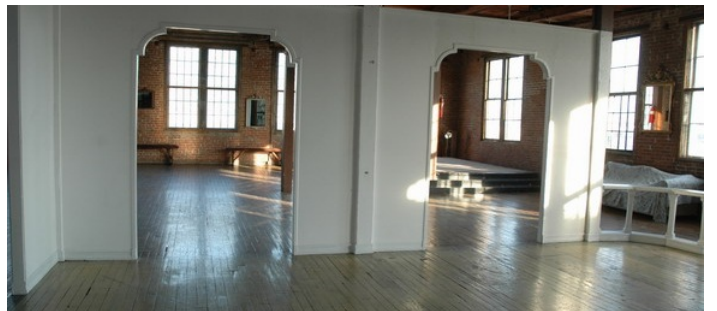
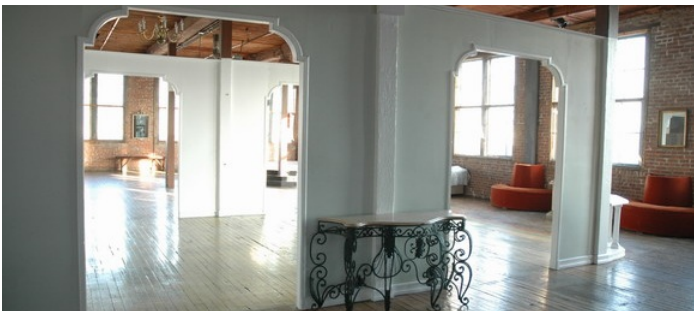
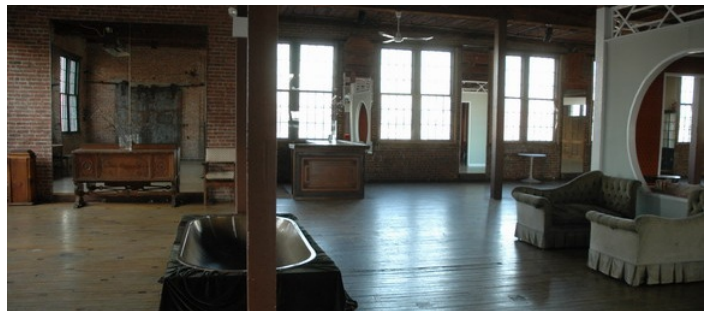
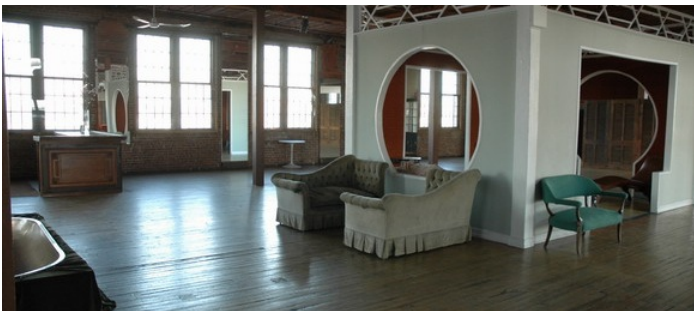
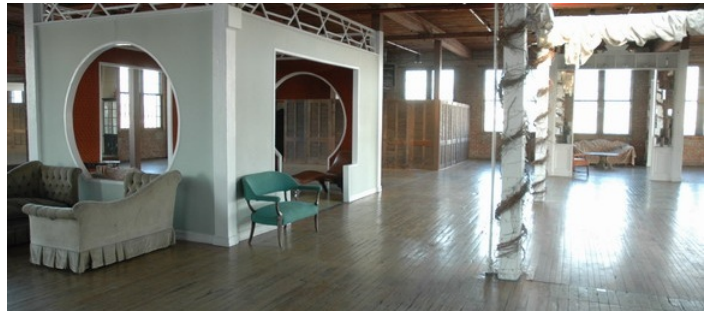
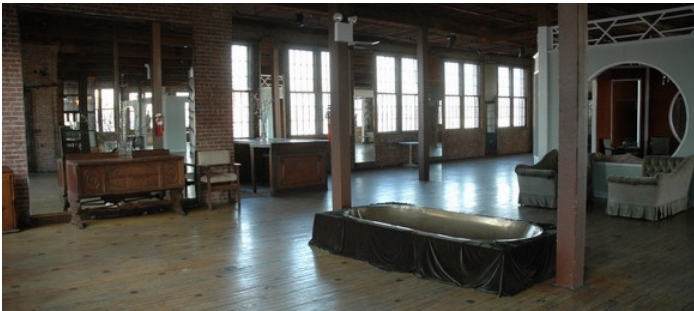
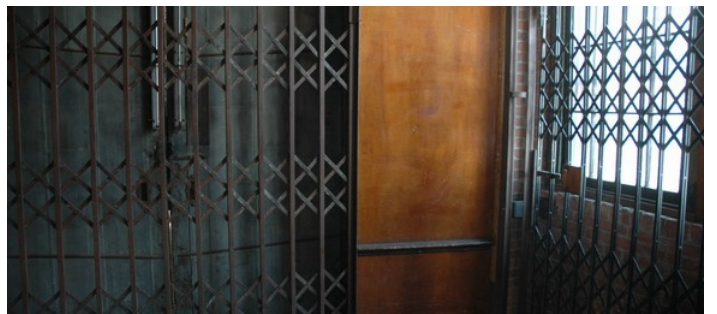
 SPECS  
9,000 sq ft

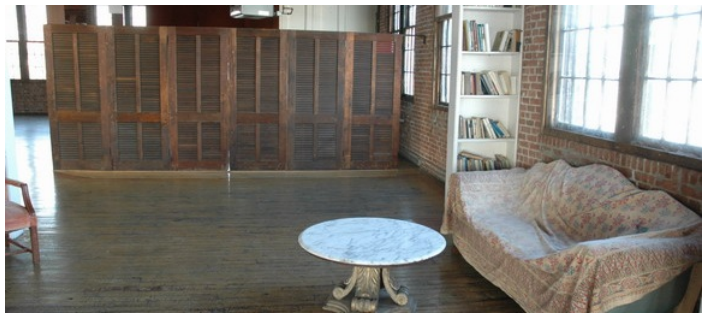
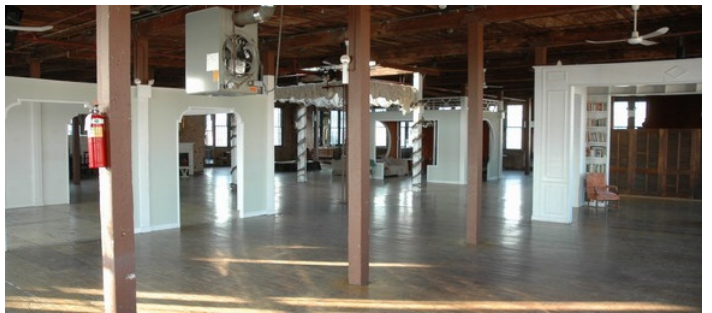
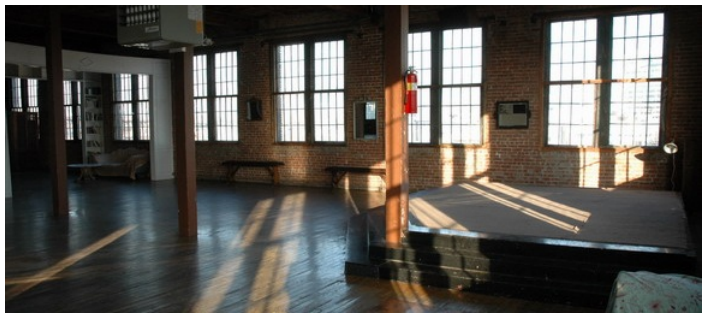
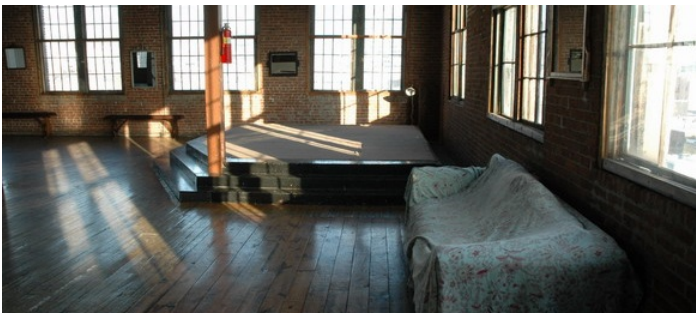
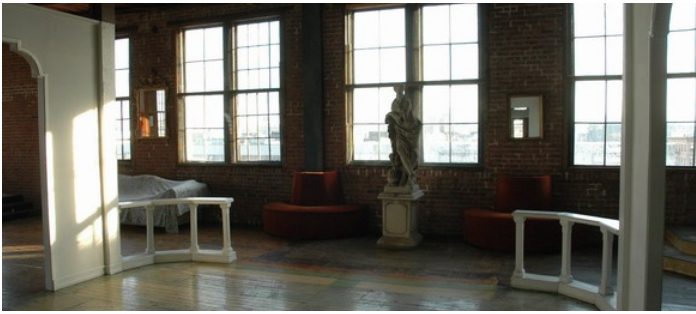
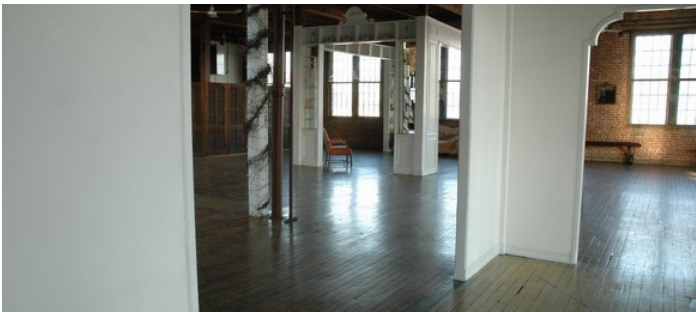
### Notes

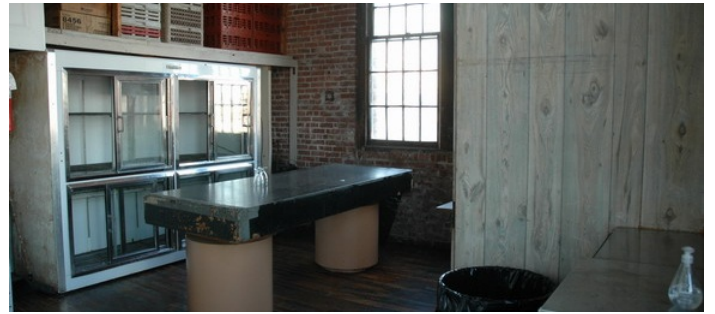
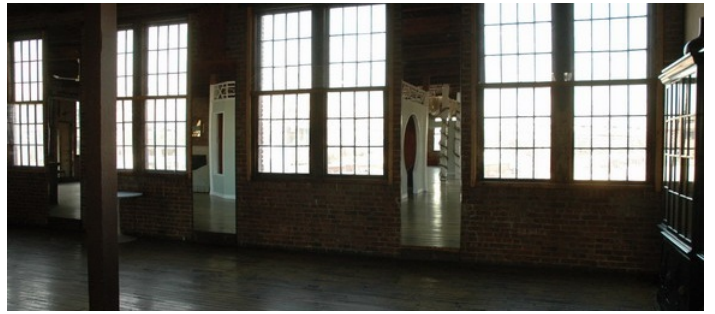
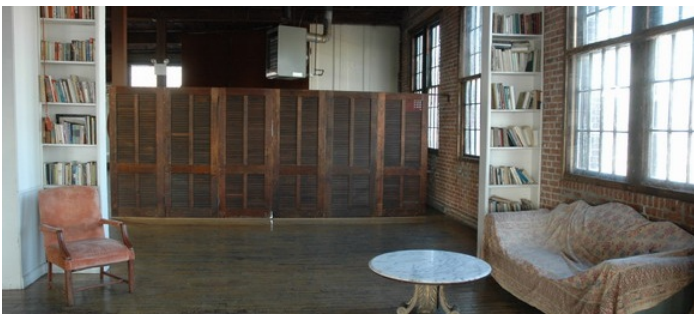
The fourth floor is 9,000 square feet of open space. There are two permanent structures but they are very open. One we have turned into a small library area and the other is a lounge. There are 8 foot tall windows on all four sides and a large skylight in the center of the space. The ceilings are 12 foot tall. There's a stage in one corner surrounded by a dance floor and on the opposite side, there's a bar area.

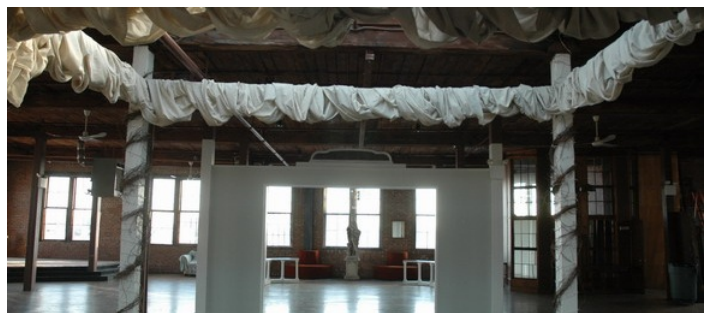
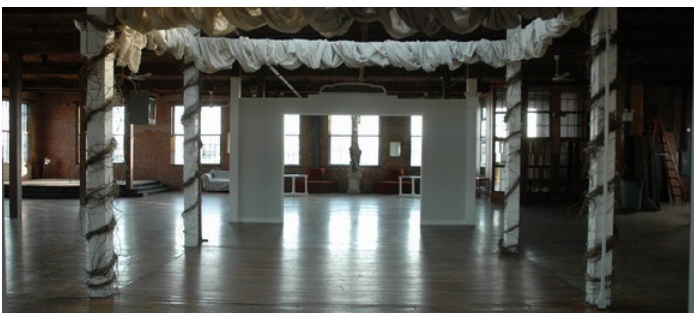
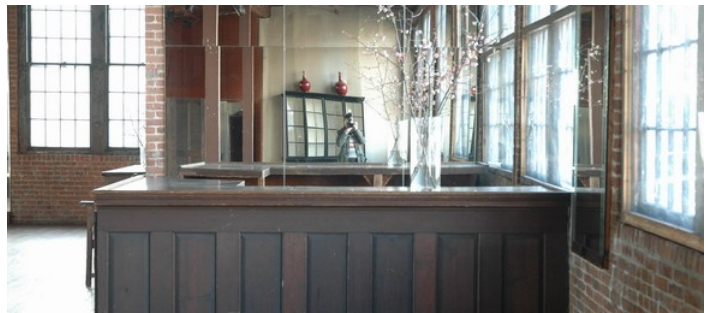
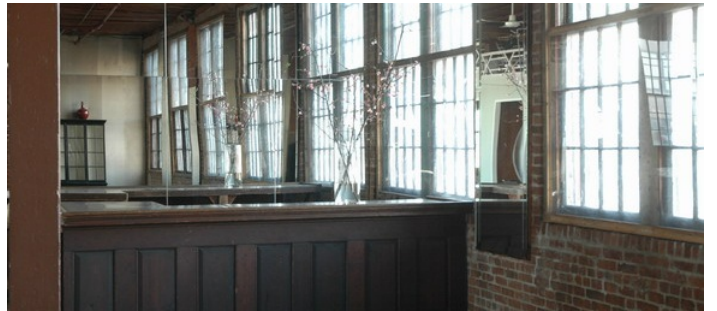
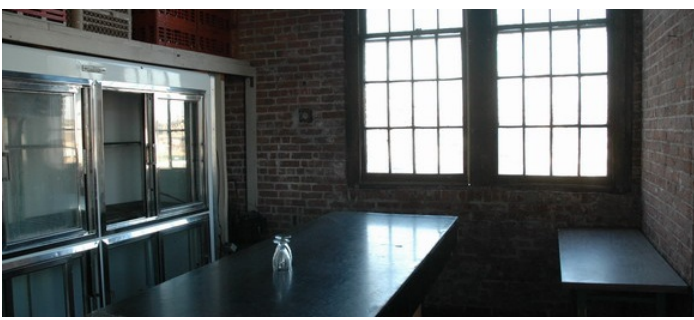


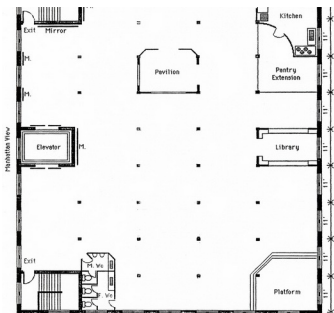
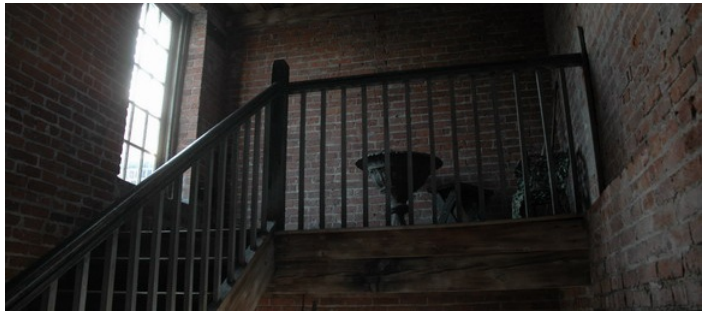
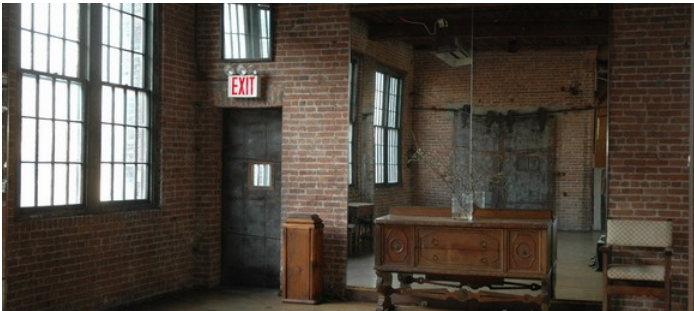
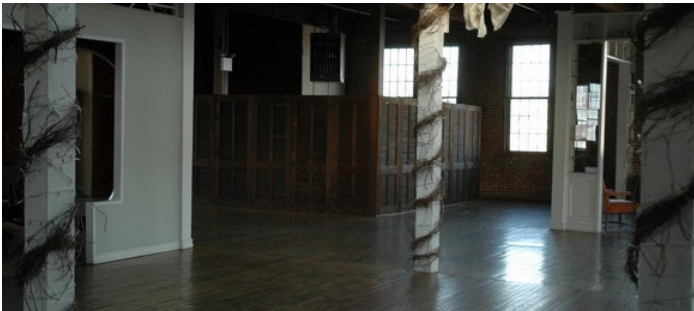
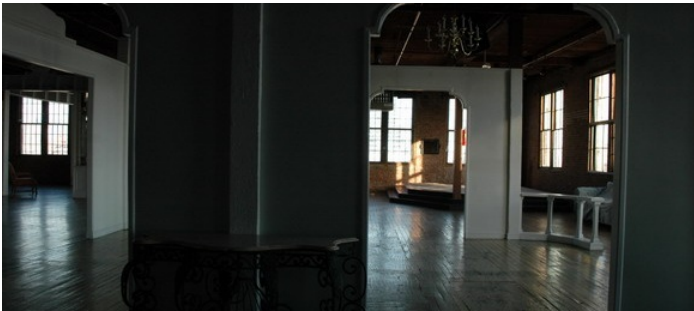
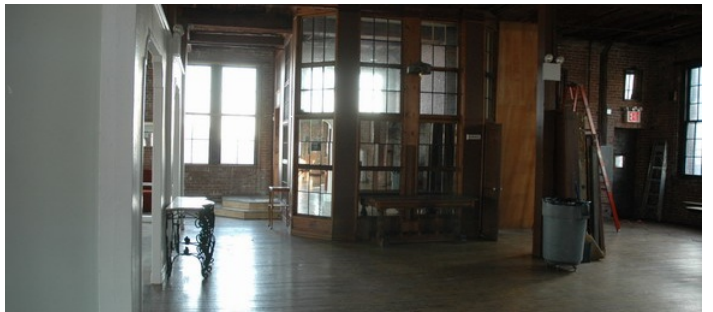
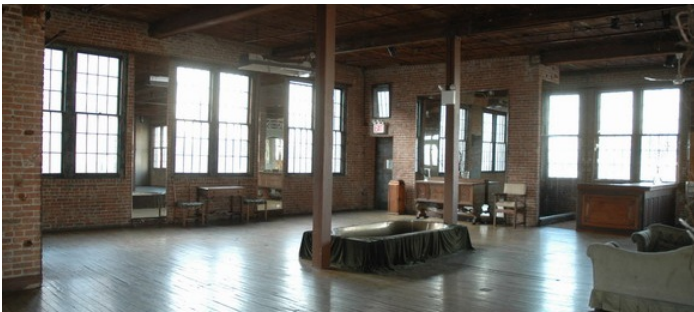














1ST FLOOR ENTRANCE

