

2ND FLOOR - VIEW FULL DETAILS BELOW



LOCATION

New York, NY 10013



SPECS

10,000 sq ft per floor



TAGS

City View, Distressed Patina, Elevator, Empty, Exposed Beam, Exposed Brick, Floor to Ceiling Windows, Modern Contemporary, Raw Industrial, Staircase, Traditional, Wood Floor



POWER

20 amp outlets throughout with 3 phase 200 amp cam loc tie in available (additional fee)



CATEGORIES

* In the Zone, Event Space, Loft, Studio

Notes

Constructed in 1890, this cast iron building was bustling area of Manhattan and was occupied by a famous textile manufacturing businesses. The lofts still retain many of the original details.

Second Floor - 10,000 square feet, open floor plan, light hardwood floors, 12-10' floor to ceiling windows (eastern and western light), 14' ceilings with original tin detail, exposed brick.

Ground Floor - 10,000 square feet, open floor plan, light hardwood floors, 16' floor to ceiling windows, original tin ceilings, exposed brick, water feature (waterfall).

Basement - 10,000 square feet, open floor plan, concrete floors, 12' ceilings with original tin detail, exposed brick walls.

20 amp outlets throughout with 3 phase 200 amp cam loc tie in available (additional fee).

24-hour building access.

High speed wifi available (additional fee).

ADA Compliant bathrooms in basement. 24-hour building access.

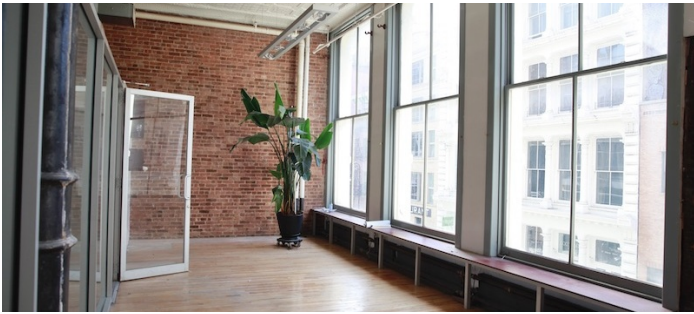
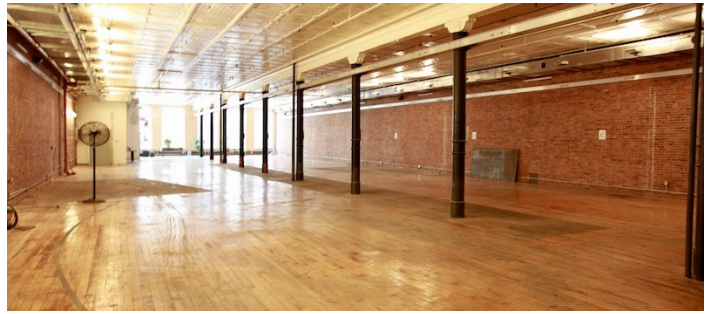
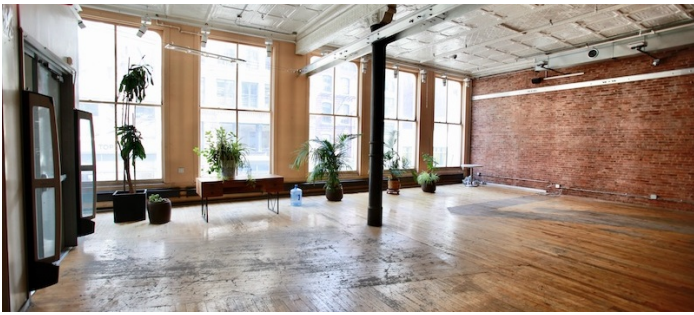
Restrictions:

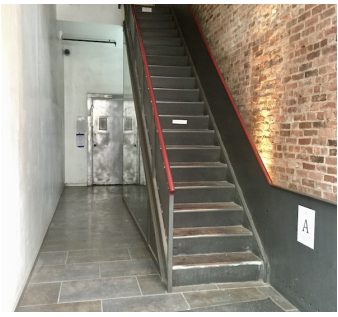
Photo equipment and expendables (i.e. chairs, steamers, irons, etc) must be rented through the studio.

All floors must be protected, booties must be worn over shoes, areas of use determined in advance.

Use of building stairwell must be cleared in advance - building fees may apply.

Elevators are not padded, all equipment and props that enter must have protection to not damage the elevators. Elevator fees apply.





GROUND FLOOR

